

Product datasheet

Anti-TLR1 antibody ab37068

1 References 4 图像

概述

产品名称	Anti-TLR1抗体
描述	兔多克隆抗体to TLR1
宿主	Rabbit
特异性	ab37068 recognises Toll-like receptor 1 (TLR1).
经测试应用	适用于: WB, ICC/IF, IHC-P
种属反应性	与反应: Mouse, Human
免疫原	Synthetic peptide of 16 amino acids near the amino terminus (Human)
阳性对照	Mouse spleen lysate IF/ICC: RAW246.7 cell line

性能

形式	Liquid
存放说明	Shipped at 4°C. Store at +4°C.
存储溶液	Preservative: 0.02% Sodium Azide Constituents: PBS
纯度	Affinity purified
纯化说明	Purified by ion exchange chromatography
克隆	多克隆
同种型	IgG

应用

Our [Abpromise guarantee](#) covers the use of **ab37068** in the following tested applications.

The application notes include recommended starting dilutions; optimal dilutions/concentrations should be determined by the end user.

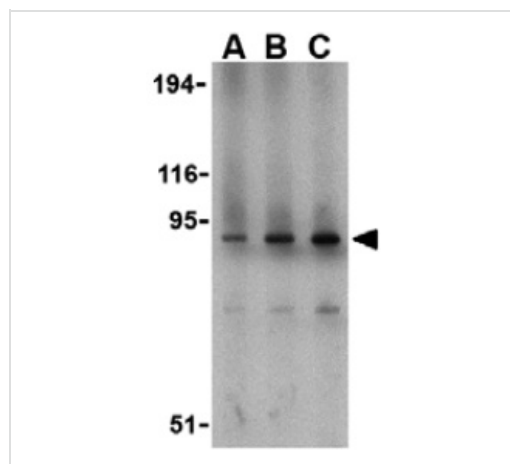
应用	Ab评论	说明
WB		Use a concentration of 1 - 2 µg/ml. Predicted molecular weight: 90 kDa.
ICC/IF		Use a concentration of 1 - 20 µg/ml.

应用	Ab评论	说明
IHC-P		Use a concentration of 10 µg/ml.

靶标

功能	Participates in the innate immune response to microbial agents. Cooperates with TLR2 to mediate the innate immune response to bacterial lipoproteins or lipopeptides. Acts via MYD88 and TRAF6, leading to NF-kappa-B activation, cytokine secretion and the inflammatory response.
组织特异性	Ubiquitous. Highly expressed in spleen, ovary, peripheral blood leukocytes, thymus and small intestine.
序列相似性	Belongs to the Toll-like receptor family. Contains 12 LRR (leucine-rich) repeats. Contains 1 LRRCT domain. Contains 1 TIR domain.
细胞定位	Cell membrane. Cytoplasmic vesicle > phagosome membrane.

图片



Western blot - Anti-TLR1 antibody (ab37068)

Lane 1 : Anti-TLR1 antibody (ab37068) at 1 µg/ml

Lane 2 : Anti-TLR1 antibody (ab37068) at 2 µg/ml

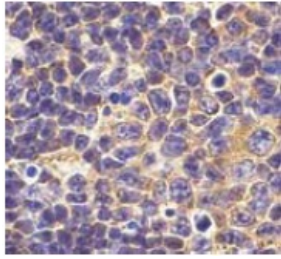
Lane 3 : Anti-TLR1 antibody (ab37068) at 4 µg/ml

All lanes : Mouse spleen lysate

Lysates/proteins at 15 µg per lane.

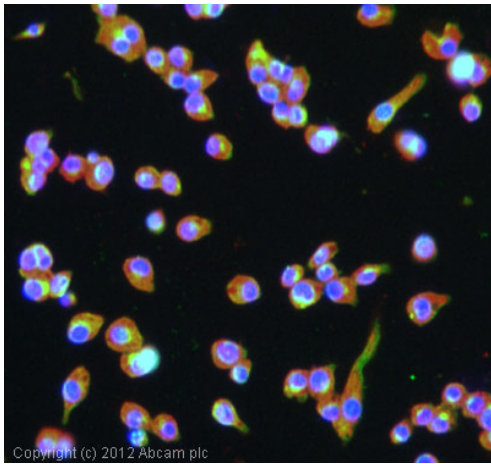
Predicted band size: 90 kDa

Additional bands at: 75 kDa. We are unsure as to the identity of these extra bands.



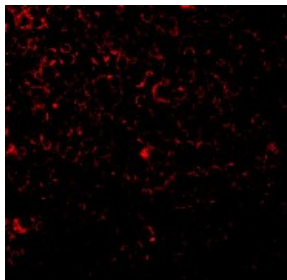
Immunohistochemistry (Formalin/PFA-fixed paraffin-embedded sections) - Anti-TLR1 antibody (ab37068)

ab37068 at 10µg/ml staining TLR1 in mouse spleen tissue by IHC



- Anti-TLR1 antibody (ab37068)

ICC/IF image of ab37068 stained RAW246.7 cells. The cells were 100% methanol fixed (5 min) and then incubated in 1%BSA / 10% normal goat serum / 0.3M glycine in 0.1% PBS-Tween for 1h to permeabilise the cells and block non-specific protein-protein interactions. The cells were then incubated with the antibody (ab37068, 1µg/ml) overnight at +4°C. The secondary antibody (green) was [ab96899](#), DyLight® 488 goat anti-rabbit IgG (H+L) used at a 1/250 dilution for 1h. Alexa Fluor® 594 WGA was used to label plasma membranes (red) at a 1/200 dilution for 1h. DAPI was used to stain the cell nuclei (blue) at a concentration of 1.43µM.



Immunocytochemistry/ Immunofluorescence - Anti-TLR1 antibody (ab37068)

Immunofluorescence of TLR1 in Mouse Spleen cells using ab37068 at 20 ug/ml.

Please note: All products are "FOR RESEARCH USE ONLY AND ARE NOT INTENDED FOR DIAGNOSTIC OR THERAPEUTIC USE"

Our Abpromise to you: Quality guaranteed and expert technical support

- Replacement or refund for products not performing as stated on the datasheet
- Valid for 12 months from date of delivery

- Response to your inquiry within 24 hours
- We provide support in Chinese, English, French, German, Japanese and Spanish
- Extensive multi-media technical resources to help you
- We investigate all quality concerns to ensure our products perform to the highest standards

If the product does not perform as described on this datasheet, we will offer a refund or replacement. For full details of the Abpromise, please visit <http://www.abcam.cn/abpromise> or contact our technical team.

Terms and conditions

- Guarantee only valid for products bought direct from Abcam or one of our authorized distributors