

Product datasheet

Anti-TLR1 antibody ab22057

1 References 2 图像

概述

产品名称	Anti-TLR1抗体
描述	兔多克隆抗体to TLR1
宿主	Rabbit
经测试应用	适用于: WB, Flow Cyt
种属反应性	与反应: Human 不与反应: Mouse
免疫原	Synthetic peptide: LQQLDISQNSVSYDEKKGDCSWTKSLLSLNMSSNILTDTIFRCLPPRIKV L conjugated to KLH, corresponding to amino acids 400-450 of Human TLR1. Run BLAST with Run BLAST with
阳性对照	Ramos

性能

形式	Liquid
存放说明	Shipped at 4°C. Store at +4°C short term (1-2 weeks). Upon delivery aliquot. Store at -20°C or -80°C. Avoid freeze / thaw cycle.
存储溶液	Preservative: 0.05% Sodium Azide Constituents: 0.05% BSA, PBS
纯度	Protein G purified
克隆	多克隆
同种型	IgG

应用

Our [Abpromise guarantee](#) covers the use of **ab22057** in the following tested applications.

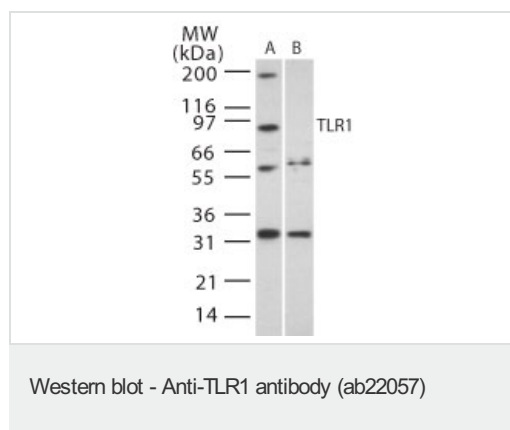
The application notes include recommended starting dilutions; optimal dilutions/concentrations should be determined by the end user.

应用	Ab评论	说明
WB		Use a concentration of 1 - 3 µg/ml. Detects a band of approximately 87 kDa.
Flow Cyt		Use 2-4µg for 10 ⁶ cells. ab171870 - Rabbit polyclonal IgG, is suitable for use as an isotype control with this antibody.

靶标

功能	Participates in the innate immune response to microbial agents. Cooperates with TLR2 to mediate the innate immune response to bacterial lipoproteins or lipopeptides. Acts via MYD88 and TRAF6, leading to NF-kappa-B activation, cytokine secretion and the inflammatory response.
组织特异性	Ubiquitous. Highly expressed in spleen, ovary, peripheral blood leukocytes, thymus and small intestine.
序列相似性	Belongs to the Toll-like receptor family. Contains 12 LRR (leucine-rich) repeats. Contains 1 LRRCT domain. Contains 1 TIR domain.
细胞定位	Cell membrane. Cytoplasmic vesicle > phagosome membrane.

图片



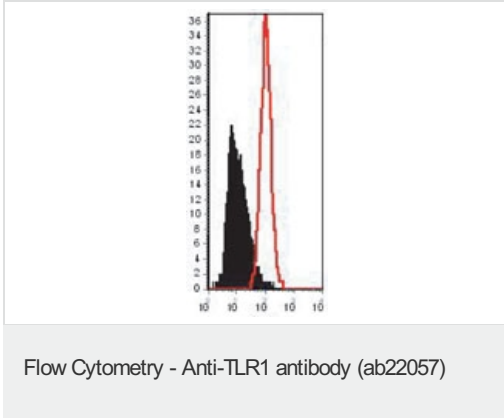
All lanes : Anti-TLR1 antibody (ab22057) at 2 µg/ml

Lane 1 : Ramos whole cell lysate ([ab3955](#))

Lane 2 : RAW 264.7 whole cell lysate ([ab7187](#))

Observed band size: 87 kDa

Additional bands at: 190 kDa, 32 kDa, 60 kDa. We are unsure as to the identity of these extra bands.



ab22057, at $4\mu\text{g}/10^6$, staining TLR1 in permeabilised Ramos cells by flow cytometric analysis (open histogram).

Please note: All products are "FOR RESEARCH USE ONLY AND ARE NOT INTENDED FOR DIAGNOSTIC OR THERAPEUTIC USE"

Our Abpromise to you: Quality guaranteed and expert technical support

- Replacement or refund for products not performing as stated on the datasheet
- Valid for 12 months from date of delivery
- Response to your inquiry within 24 hours
- We provide support in Chinese, English, French, German, Japanese and Spanish
- Extensive multi-media technical resources to help you
- We investigate all quality concerns to ensure our products perform to the highest standards

If the product does not perform as described on this datasheet, we will offer a refund or replacement. For full details of the Abpromise, please visit <http://www.abcam.cn/abpromise> or contact our technical team.

Terms and conditions

- Guarantee only valid for products bought direct from Abcam or one of our authorized distributors