

Product datasheet

Anti-TLE3 antibody ab94972

★★★★★ 1 Abreviews 2 References 3 图像

概述

产品名称	Anti-TLE3抗体
描述	兔多克隆抗体to TLE3
经测试应用	适用于: IP, WB, ICC/IF
种属反应性	与反应: Human 预测可用于: Mouse, Rat
免疫原	Synthetic peptide conjugated to KLH derived from within residues 200 to the C-terminus of Human TLE3. 参阅Abcam的专有抗源政策(Peptide available as ab109092 .)
阳性对照	This antibody gave a positive signal in the following lysates: Breast (Human) Tissue Lysate; MCF7 Whole Cell Lysate; MDA-MB-231 Whole Cell Lysate; Lung (Human) Tissue Lysate; A549 Whole Cell Lysate; A431 Whole Cell Lysate; HeLa Nuclear Lysate

性能

形式	Liquid
存放说明	Shipped at 4°C. Store at +4°C short term (1-2 weeks). Upon delivery aliquot. Store at -20°C or -80°C. Avoid freeze / thaw cycle.
存储溶液	Preservative: 0.02% Sodium Azide Constituents: 1% BSA, PBS, pH 7.4
纯度	Immunogen affinity purified
克隆	多克隆
同种型	IgG

应用

Our [Abpromise guarantee](#) covers the use of **ab94972** in the following tested applications.

The application notes include recommended starting dilutions; optimal dilutions/concentrations should be determined by the end user.

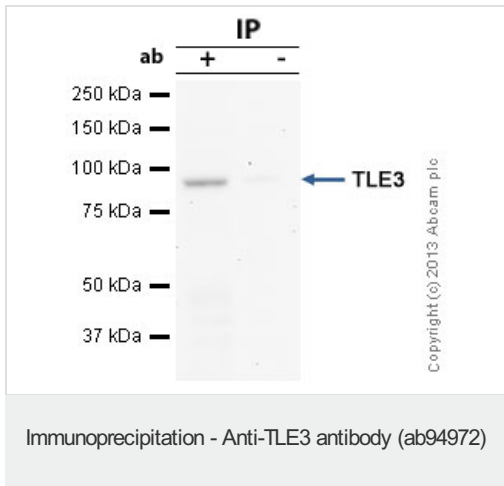
应用	Ab评论	说明
IP		Use at an assay dependent concentration.

应用	Ab评论	说明
WB	★★★★★	Use a concentration of 1 mg/ml. Detects a band of approximately 83 kDa (predicted molecular weight: 83 kDa).
ICC/IF		Use a concentration of 1 µg/ml.

靶标

功能	Transcriptional corepressor that binds to a number of transcription factors. Inhibits the transcriptional activation mediated by CTNNB1 and TCF family members in Wnt signaling. The effects of full-length TLE family members may be modulated by association with dominant-negative AES.
组织特异性	Placenta and lung.
序列相似性	Belongs to the WD repeat Groucho/TLE family. Contains 7 WD repeats.
翻译后修饰	Ubiquitinated by XIAP/BIRC4. This ubiquitination does not affect its stability, nuclear localization, or capacity to tetramerize but inhibits its interaction with TCF7L2/TCF4.
细胞定位	Nucleus.

图片



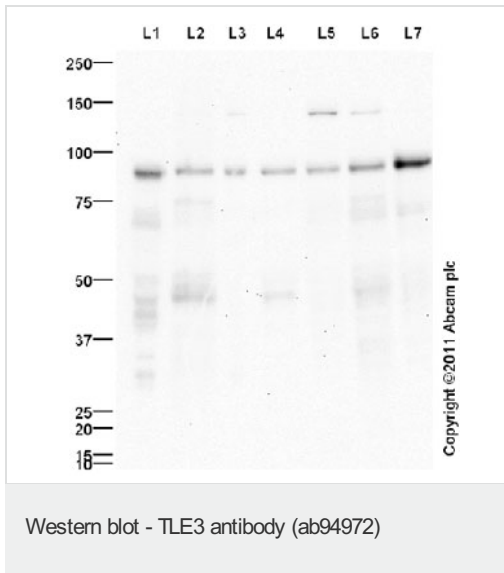
TLE3 was immunoprecipitated using 0.5mg HeLa whole cell extract, 5µg of Rabbit polyclonal to TLE3 and 50µl of protein G magnetic beads (+). No antibody was added to the control (-).

The antibody was incubated under agitation with Protein G beads for 10min, HeLa whole cell extract lysate diluted in RIPA buffer was added to each sample and incubated for a further 10min under agitation.

Proteins were eluted by addition of 40µl SDS loading buffer and incubated for 10min at 70°C; 10µl of each sample was separated on a SDS PAGE gel, transferred to a nitrocellulose membrane, blocked with 5% BSA and probed with ab94972.

Secondary: Mouse monoclonal [SB62a]
Secondary Antibody to Rabbit IgG light chain (HRP) ([ab99697](#)).

Band: 83kDa; TLE3



All lanes : Anti-TLE3 antibody (ab94972) at 1 µg/ml

Lane 1 : Human breast tissue lysate - total protein ([ab30090](#))

Lane 2 : MCF7 (Human breast adenocarcinoma cell line) Whole Cell Lysate

Lane 3 : MDA-MB-231 (Human breast adenocarcinoma cell line) Whole Cell Lysate

Lane 4 : Lung (Human) Tissue Lysate

Lane 5 : A549 (Human lung adenocarcinoma epithelial cell line) Whole Cell Lysate

Lane 6 : A431 (Human epithelial carcinoma cell line) Whole Cell Lysate

Lane 7 : HeLa (Human epithelial carcinoma cell line) Nuclear Lysate

Lysates/proteins at 10 µg per lane.

Secondary

Goat polyclonal Secondary Antibody to Rabbit IgG - H&L (HRP), pre-adsorbed at 1/5000 dilution

Developed using the ECL technique

Performed under reducing conditions.

Predicted band size : 83 kDa

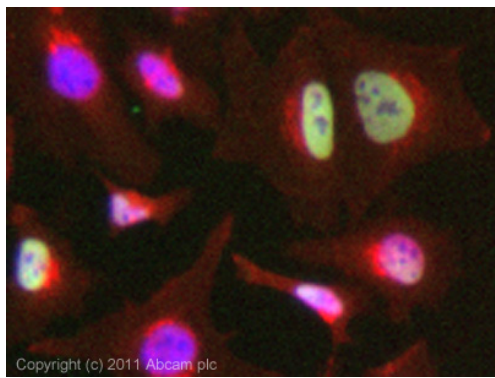
Observed band size : 83 kDa

Additional bands at : 125 kDa, 43 kDa. We are unsure as to the identity of these extra bands.

Exposure time : 8 minutes

Abcam recommends using milk as the blocking agent.

Abcam welcomes customer feedback and would appreciate any comments regarding this product and the data presented above.



Immunocytochemistry/ Immunofluorescence - TLE3 antibody (ab94972)

ICC/IF image of ab94972 stained HeLa cells. The cells were 4% PFA fixed (10 min) and then incubated in 1%BSA / 10% normal goat serum / 0.3M glycine in 0.1% PBS-Tween for 1h to permeabilise the cells and block non-specific protein-protein interactions. The cells were then incubated with the antibody (ab94972, 1µg/ml) overnight at +4°C. The secondary antibody (green) was ab96899, DyLight® 488 goat anti-rabbit IgG (H+L) used at a 1/250 dilution for 1h. Alexa Fluor® 594 WGA was used to label plasma membranes (red) at a 1/200 dilution for 1h. DAPI was used to stain the cell nuclei (blue) at a concentration of 1.43µM. This antibody also gave a positive result in 4% PFA fixed (10 min) Hek293, HepG2 and MCF7 cells at 1µg/ml.

Please note: All products are "FOR RESEARCH USE ONLY AND ARE NOT INTENDED FOR DIAGNOSTIC OR THERAPEUTIC USE"

Our Abpromise to you: Quality guaranteed and expert technical support

- Replacement or refund for products not performing as stated on the datasheet
- Valid for 12 months from date of delivery
- Response to your inquiry within 24 hours
- We provide support in Chinese, English, French, German, Japanese and Spanish
- Extensive multi-media technical resources to help you
- We investigate all quality concerns to ensure our products perform to the highest standards

If the product does not perform as described on this datasheet, we will offer a refund or replacement. For full details of the Abpromise, please visit <http://www.abcam.cn/abpromise> or contact our technical team.

Terms and conditions

- Guarantee only valid for products bought direct from Abcam or one of our authorized distributors