

## Product datasheet

# Anti-TIMM23 antibody ab116329

★★★★★ 2 Abreviews 3 References 2 图像

### 概述

产品名称	Anti-TIMM23抗体
描述	兔多克隆抗体to TIMM23
经测试应用	适用于: WB
种属反应性	与反应: Human
免疫原	Synthetic peptide corresponding to Human TIMM23 aa 130-158 (C terminal) conjugated to Keyhole Limpet Haemocyanin (KLH). Database link: <a href="#">O14925</a>
阳性对照	WB: MCF7 and A431 cell lysate.

### 性能

形式	Liquid
存放说明	Shipped at 4°C. Store at 4°C (up to 6 months). Upon delivery aliquot. Store at -20°C long term. Avoid freeze / thaw cycle.
存储溶液	Preservative: 0.09% Sodium azide Constituent: PBS
纯度	Immunogen affinity purified
纯化说明	ab116329 is purified through a Protein A column, followed by peptide affinity purification.
克隆	多克隆
同种型	IgG

### 应用

Our [Abpromise guarantee](#) covers the use of **ab116329** in the following tested applications.

The application notes include recommended starting dilutions; optimal dilutions/concentrations should be determined by the end user.

应用	Ab评论	说明
WB	★★★★★	1/1000. Predicted molecular weight: 22 kDa.

## 靶标

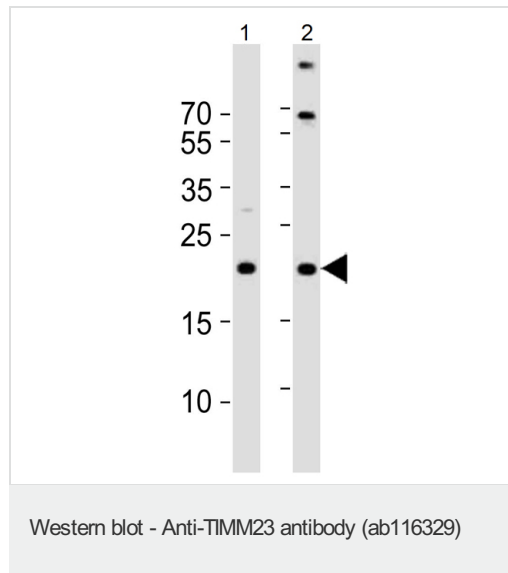
### 相关性

TIMM23 belongs to the Tim17/Tim22/Tim23 family and is an essential component of the TIM23 complex, a complex that mediates the translocation of transit peptide-containing proteins across the mitochondrial inner membrane.

### 细胞定位

Mitochondrion inner membrane; Multi-pass membrane protein.

## 图片



**All lanes :** Anti-TIMM23 antibody (ab116329)  
at 1/1000 dilution

**Lane 1 :** MCF-7 cell lysate

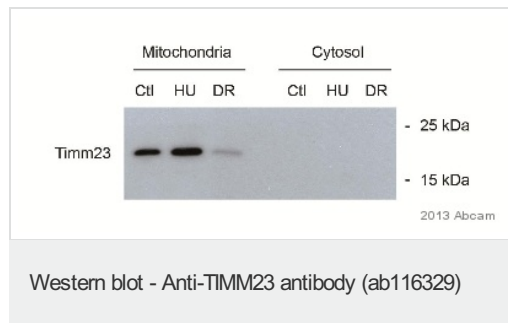
**Lane 2 :** A431 cell lysate

Lysates/proteins at 20 µg per lane.

### Secondary

HRP-conjugated goat anti-rabbit IgG (H+L) at  
1/10000 dilution

**Predicted band size :** 22 kDa



Developed using the ECL technique

Performed under reducing conditions.

**Predicted band size :** 22 kDa

**Exposure time :** 3 seconds

Western blot analysis of NB4 human cell line (cell fractionation, 30µg/lane) labelling TIMM23 with ab116329 at 1/500. [ab97051](#) was used as the secondary antibody (1/10000).

Treatment - DMSO Control (CTL), 0,5 mM Hydroxyurea (HU), 1 µM Doxorubicin (DR).

**Please note:** All products are "FOR RESEARCH USE ONLY AND ARE NOT INTENDED FOR DIAGNOSTIC OR THERAPEUTIC USE"

## **Our Abpromise to you: Quality guaranteed and expert technical support**

---

- Replacement or refund for products not performing as stated on the datasheet
- Valid for 12 months from date of delivery
- Response to your inquiry within 24 hours
  
- We provide support in Chinese, English, French, German, Japanese and Spanish
- Extensive multi-media technical resources to help you
- We investigate all quality concerns to ensure our products perform to the highest standards

If the product does not perform as described on this datasheet, we will offer a refund or replacement. For full details of the Abpromise, please visit <http://www.abcam.cn/abpromise> or contact our technical team.

## **Terms and conditions**

---

- Guarantee only valid for products bought direct from Abcam or one of our authorized distributors