


Product datasheet

Anti-TCHP antibody ab77622

4 图像

概述

产品名称	Anti-TCHP 抗体
描述	兔多克隆抗体 to TCHP
宿主	Rabbit
经测试应用	适用于: IHC-P, ICC/IF, WB
种属反应性	与反应: Human 预测可用于: Orangutan 
免疫原	Synthetic peptide conjugated to KLH derived from within residues 450 to the C-terminus of Human TCHP. 参阅 Abcam 的 专有抗源政策
阳性对照	This antibody gave a positive signal in human tonsil tissue lysate and in the whole cell lysate: U87MG.

性能

形式	Liquid
存放说明	Shipped at 4°C. Store at +4°C short term (1-2 weeks). Upon delivery aliquot. Store at -20°C or -80°C. Avoid freeze / thaw cycle.
存储溶液	Preservative: 0.02% Sodium Azide Constituents: 1% BSA, PBS. pH 7.4
纯度	Immunogen affinity purified
克隆	多克隆
同种型	IgG

应用

Our [Abpromise guarantee](#) covers the use of **ab77622** in the following tested applications.

The application notes include recommended starting dilutions; optimal dilutions/concentrations should be determined by the end user.

应用	Ab 评论	说明
IHC-P		Use a concentration of 1 µg/ml.

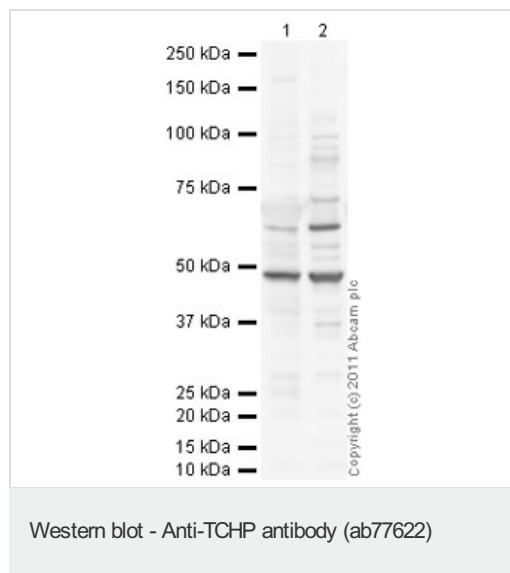
应用	Ab评论	说明
ICC/IF		Use a concentration of 5 µg/ml.
WB		Use a concentration of 1 µg/ml. Detects a band of approximately 65 kDa (predicted molecular weight: 61 kDa).

靶标

相关性 A tumour suppressor protein which may act as a 'capping' or 'branching' protein for keratin filaments in the cell periphery.

细胞定位 Cytoplasmic, cytoskeleton

图片



All lanes : Anti-TCHP antibody (ab77622) at 1 µg/ml

Lane 1 : Human tonsil normal tissue lysate - total protein ([ab29615](#))

Lane 2 : U-87 MG (Human glioblastoma astrocytoma) Whole Cell Lysate

Lysates/proteins at 10 µg per lane.

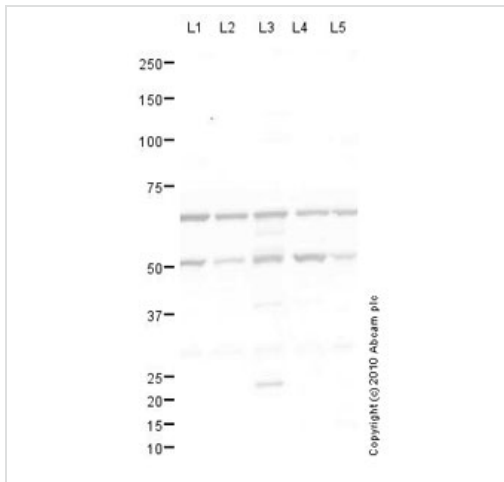
Secondary

All lanes : Goat Anti-Rabbit IgG H&L (HRP) preadsorbed ([ab97080](#)) at 1/5000 dilution

Predicted band size: 61 kDa

Observed band size: 65 kDa

Additional bands at: 49 kDa. We are unsure as to the identity of these extra bands.



Western blot - Anti-TCHP antibody (ab77622)

All lanes : Anti-TCHP antibody (ab77622) at 1 µg/ml

Lane 1 : HeLa (Human epithelial carcinoma cell line) Whole Cell Lysate

Lane 2 : A431 (Human epithelial carcinoma cell line) Whole Cell Lysate

Lane 3 : Human skin tissue lysate - total protein ([ab30166](#))

Lane 4 : Saos 2 (Human epithelial-like osteosarcoma cell line) Whole Cell Lysate

Lane 5 : T47D whole cell lysate ([ab14899](#))

Lysates/proteins at 10 µg per lane.

Secondary

All lanes : Goat polyclonal to Rabbit IgG - H&L - Pre-Adsorbed (HRP) at 1/3000 dilution

Developed using the ECL technique.

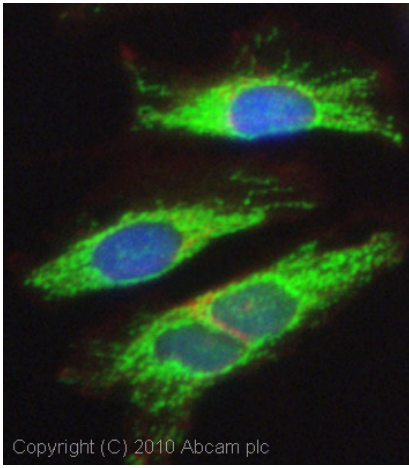
Performed under reducing conditions.

Predicted band size: 61 kDa

Observed band size: 65 kDa

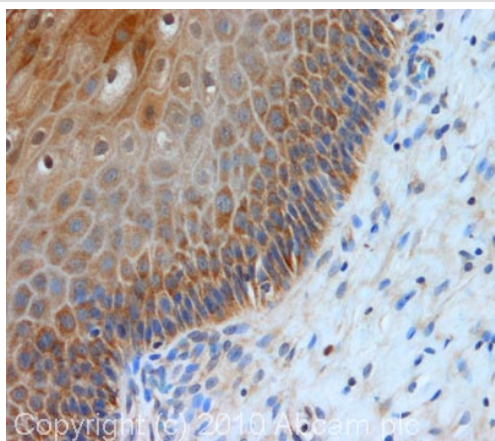
Additional bands at: 53 kDa. We are unsure as to the identity of these extra bands.

Exposure time: 30 seconds



Immunocytochemistry/ Immunofluorescence - Anti-TCHP antibody (ab77622)

ICC/IF image of ab77622 stained HeLa cells. The cells were 100% methanol fixed (5 min) and then incubated in 1%BSA / 10% normal goat serum / 0.3M glycine in 0.1% PBS-Tween for 1h to permeabilise the cells and block non-specific protein-protein interactions. The cells were then incubated with the antibody (ab77622, 5µg/ml) overnight at +4°C. The secondary antibody (green) was Alexa Fluor® 488 goat anti-rabbit IgG (H+L) used at a 1/1000 dilution for 1h. Alexa Fluor® 594 WGA was used to label plasma membranes (red) at a 1/200 dilution for 1h. DAPI was used to stain the cell nuclei (blue) at a concentration of 1.43µM. This antibody also gave a positive result in 100% methanol fixed (5 min) Hek293, HepG2 and MCF7 cells at 5µg/ml.



Immunohistochemistry (Formalin/PFA-fixed paraffin-embedded sections) - Anti-TCHP antibody (ab77622)

IHC image of TCHP staining in human normal cervix formalin fixed paraffin embedded tissue section, performed on a Leica Bond™ system using the standard protocol F. The section was pre-treated using heat mediated antigen retrieval with sodium citrate buffer (pH6, epitope retrieval solution 1) for 20 mins. The section was then incubated with 77622, 1µg/ml, for 15 mins at room temperature and detected using an HRP conjugated compact polymer system. DAB was used as the chromogen. The section was then counterstained with haematoxylin and mounted with DPX.

Please note: All products are "FOR RESEARCH USE ONLY AND ARE NOT INTENDED FOR DIAGNOSTIC OR THERAPEUTIC USE"

Our Abpromise to you: Quality guaranteed and expert technical support

- Replacement or refund for products not performing as stated on the datasheet
- Valid for 12 months from date of delivery
- Response to your inquiry within 24 hours
- We provide support in Chinese, English, French, German, Japanese and Spanish
- Extensive multi-media technical resources to help you
- We investigate all quality concerns to ensure our products perform to the highest standards

If the product does not perform as described on this datasheet, we will offer a refund or replacement. For full details of the Abpromise, please visit <http://www.abcam.cn/abpromise> or contact our technical team.

Terms and conditions

- Guarantee only valid for products bought direct from Abcam or one of our authorized distributors