


## Product datasheet

# Anti-Src (phospho Y418) antibody ab110777

### 2 图像

#### 概述

<b>产品名称</b>	Anti-Src (phospho Y418)抗体
<b>描述</b>	兔多克隆抗体to Src (phospho Y418)
<b>宿主</b>	Rabbit
<b>经测试应用</b>	<b>适用于:</b> WB, ELISA
<b>种属反应性</b>	<b>与反应:</b> Human <b>预测可用于:</b> Mouse, Rat, Chicken, Dog 
<b>免疫原</b>	Synthetic peptide conjugated to KLH derived from within residues 400 - 500 of Mouse Src, phosphorylated at Y418, phosphorylated at Y418 and phosphorylated at Y418.参阅Abcam的专有抗源政策
<b>阳性对照</b>	This antibody gave a positive signal in Jurkat whole cell lysate.

#### 性能

<b>形式</b>	Liquid
<b>存放说明</b>	Shipped at 4°C. Store at +4°C short term (1-2 weeks). Upon delivery aliquot. Store at -20°C or -80°C. Avoid freeze / thaw cycle.
<b>存储溶液</b>	pH: 7.40 Preservative: 0.02% Sodium azide Constituent: PBS Note: Batches of this product that have a concentration < 1mg/ml may have BSA added as a stabilising agent. If you would like information about the formulation of a specific lot, please contact our scientific support team who will be happy to help.
<b>纯度</b>	Immunogen affinity purified
<b>克隆</b>	多克隆
<b>同种型</b>	IgG

#### 应用

Our [Abpromise guarantee](#) covers the use of **ab110777** in the following tested applications.

The application notes include recommended starting dilutions; optimal dilutions/concentrations should be determined by the end user.

应用	Ab评论	说明
WB		Use a concentration of 1 µg/ml. Detects a band of approximately 60 kDa (predicted molecular weight: 60 kDa).
ELISA		Use at an assay dependent concentration.

## 靶标

### 功能

Non-receptor protein tyrosine kinase that plays pivotal roles in numerous cellular processes such as proliferation, migration, and transformation. In concert with PTK2B, plays an important role in osteoclastic bone resorption. Both the formation of a SRC-PTK2B complex, and SRC kinase activity are necessary for this function. Once it is recruited to the activated integrins, by PTK2B, it phosphorylates CBL which in turn induces the activation and recruitment of phosphatidylinositol 3-kinase to the cell membrane in a signaling pathway that is critical for osteoclast function. Promotes energy production in osteoclasts by activating mitochondrial cytochrome C oxidase. Phosphorylates RUNX3 and COX2 on tyrosine residues, TNK2 on 'Tyr-284' and CBL on 'Tyr-731'. Enhances DDX58/RIG-I-elicited antiviral signaling.

### 序列相似性

Belongs to the protein kinase superfamily. Tyr protein kinase family. SRC subfamily. Contains 1 protein kinase domain. Contains 1 SH2 domain. Contains 1 SH3 domain.

### 翻译后修饰

Dephosphorylated at Tyr-530 by PTPRJ (By similarity). Phosphorylated on Tyr-530 by c-Src kinase (CSK). The phosphorylated form is termed pp60c-src. Dephosphorylated by PTPRJ at Tyr-419. Normally maintained in an inactive conformation with the SH2 domain engaged with Tyr-530, the SH3 domain engaged with the SH2-kinase linker, and Tyr-419 dephosphorylated. Dephosphorylation of Tyr-530 as a result of protein tyrosine phosphatase (PTP) action disrupts the intramolecular interaction between the SH2 domain and Tyr-530, Tyr-419 can then become autophosphorylated, resulting in SRC activation. Phosphorylation of Tyr-530 by CSK allows this interaction to reform, resulting in SRC inactivation. S-nitrosylation is important for activation of its kinase activity.

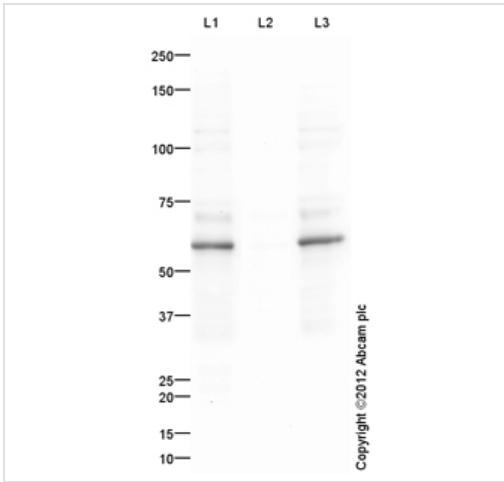
### 细胞定位

Cell membrane. Mitochondrion inner membrane.

### 形式

This protein is known to be similar in amino acid sequence to HCK (P08631), LCK (P06239), FYN (P06241), YES1 (P07947), and LYN (P07948). Therefore, cross-reactivity with these homologous proteins may be observed. We would be happy to provide immunogen alignment information upon request.

## 图片



Western blot - Anti-Src (phospho Y418) antibody (ab110777)

**All lanes :** Anti-Src (phospho Y418) antibody (ab110777) at 1 µg/ml

**Lane 1 :** Jurkat (Human T cell lymphoblast-like cell line) Whole Cell Lysate

**Lane 2 :** Jurkat (Human T cell lymphoblast-like cell line) Whole Cell Lysate with Immunizing peptide at 1 µg/ml

**Lane 3 :** Jurkat (Human T cell lymphoblast-like cell line) Whole Cell Lysate with Control peptide at 1 µg/ml

Lysates/proteins at 20 µg per lane.

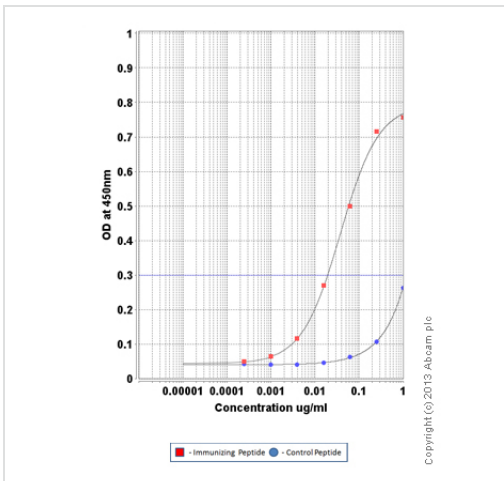
### Secondary

**All lanes :** Goat Anti-Rabbit IgG H&L (HRP) preadsorbed (ab97080) at 1/5000 dilution

**Predicted band size:** 60 kDa

**Observed band size:** 60 kDa

**Additional bands at:** 70 kDa. We are unsure as to the identity of these extra bands.



ELISA - Anti-Src (phospho Y418) antibody (ab110777)

ab110777 was tested using an Indirect ELISA approach. The wells were coated with peptide (1µg/ml at 100µl/well) overnight at 4°C, followed by a 5% BSA blocking step for 1 hour at room temperature. The primary Ab was then added at a dilution range of 1- 0.00025µg/ml (100µl/well) for 1hr at room temperature. A HRP-conjugated anti-rabbit IgG (heavy and light chain) was used as a secondary antibody at 1:20,000 dilution for 1hr at room temperature.

**Please note:** All products are "FOR RESEARCH USE ONLY AND ARE NOT INTENDED FOR DIAGNOSTIC OR THERAPEUTIC USE"

**Our Abpromise to you: Quality guaranteed and expert technical support**

- Replacement or refund for products not performing as stated on the datasheet
- Valid for 12 months from date of delivery
- Response to your inquiry within 24 hours
  
- We provide support in Chinese, English, French, German, Japanese and Spanish
- Extensive multi-media technical resources to help you
- We investigate all quality concerns to ensure our products perform to the highest standards

If the product does not perform as described on this datasheet, we will offer a refund or replacement. For full details of the Abpromise, please visit <http://www.abcam.cn/abpromise> or contact our technical team.

### **Terms and conditions**

---

- Guarantee only valid for products bought direct from Abcam or one of our authorized distributors