

Anti-Sodium Potassium ATPase antibody ab353

7 References 1 图像

概述

产品名称	Anti-Sodium Potassium ATPase抗体
描述	鸡多克隆抗体to Sodium Potassium ATPase
宿主	Chicken
特异性	Assay by immunoelectrophoresis resulted in a single precipitin arc against anti-Chicken Serum as well as purified and partially purified ATPase, Sodium, Potassium [Canine Kidney].
经测试应用	适用于: ICC/IF, IHC-Fr, ELISA, WB
种属反应性	与反应: Dog
免疫原	ATPase, Sodium, Potassium [Canine Kidney]
阳性对照	ICC: MDCK cells ELISA: 1ug recombinant protein
常规说明	Centrifuge product if not completely clear after standing at room temperature. This product is for research use only and is not intended for therapeutic or diagnostic applications. Please note that we have 2 concentrations of this antibody: 1mg/ml and 10mg/ml. Please check the vial label.

性能

形式	Liquid
存放说明	Shipped at 4°C. Upon delivery aliquot and store at -20°C or -80°C. Avoid repeated freeze / thaw cycles.
存储溶液	pH: 7.2 Preservative: 0.01% Sodium azide Constituents: 0.424% Potassium phosphate, 0.878% Sodium chloride
纯度	Immunogen affinity purified
纯化说明	This product is an IgG fraction antibody purified from monospecific antiserum by a multi-step process which includes delipidation, salt fractionation and ion exchange chromatography followed by extensive dialysis against the buffer stated above.
克隆	多克隆
同种型	IgY

应用

Our [Abpromise guarantee](#) covers the use of **ab353** in the following tested applications.

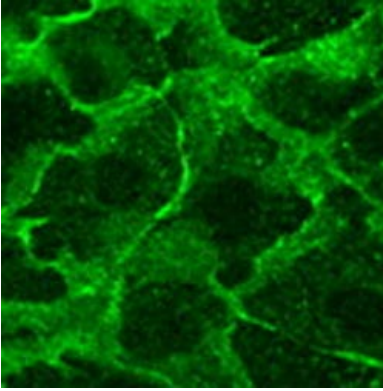
The application notes include recommended starting dilutions; optimal dilutions/concentrations should be determined by the end user.

应用	Ab 评论	说明
ICC/IF		1/500. (see review). Use amplification.
IHC-Fr		1/100. (see review)
ELISA		1/1000 - 1/6000. This product has been assayed against 1.0 ug of ATPase, Sodium, Potassium in a standard sandwich ELISA using Peroxidase conjugated Affinity Purified anti-Chicken IgG [H&L] (Rabbit) and ABTS (2,2'-azino-bis-[3-ethylbenthia-zoline-6-sulfonic acid]) as a substrate for 30 minutes at room temperature.
WB		1/100 - 1/500.

靶标

功能	This is the catalytic component of the active enzyme, which catalyzes the hydrolysis of ATP coupled with the exchange of sodium and potassium ions across the plasma membrane. This action creates the electrochemical gradient of sodium and potassium ions, providing the energy for active transport of various nutrients.
序列相似性	Belongs to the cation transport ATPase (P-type) (TC 3.A.3) family. Type IIC subfamily.
翻译后修饰	Phosphorylation on Tyr-10 modulates pumping activity.
细胞定位	Cell membrane. Melanosome. Identified by mass spectrometry in melanosome fractions from stage I to stage IV.

图片



Immunocytochemistry/ Immunofluorescence - Anti-Sodium Potassium ATPase antibody (ab353)

Image from Qin Y et al, J Cell Biol. 2005 Dec 19;171(6):1061-71. Epub 2005 Dec 12, Fig 7. DOI 10.1083/jcb.200506094

ab353 staining Sodium Potassium ATPase in Madin-Darby Canine Kidney (MDCK) cells by Immunocytochemistry/ Immunofluorescence. Cells were fixed in methanol/acetone (1:1) at -20°C for 10 minutes, permeabilized with 0.5% Triton X-100 in PBS, and blocked with 5% BSA in PBS for 1 hour before incubation with ab353 at a 1/250 dilution. An Alexa Fluor–conjugated secondary antibody was used at a dilution of 1/500 – 1/1000.

Please note: All products are "FOR RESEARCH USE ONLY AND ARE NOT INTENDED FOR DIAGNOSTIC OR THERAPEUTIC USE"

Our Abpromise to you: Quality guaranteed and expert technical support

- Replacement or refund for products not performing as stated on the datasheet
- Valid for 12 months from date of delivery
- Response to your inquiry within 24 hours
- We provide support in Chinese, English, French, German, Japanese and Spanish
- Extensive multi-media technical resources to help you
- We investigate all quality concerns to ensure our products perform to the highest standards

If the product does not perform as described on this datasheet, we will offer a refund or replacement. For full details of the Abpromise, please visit <http://www.abcam.cn/abpromise> or contact our technical team.

Terms and conditions

- Guarantee only valid for products bought direct from Abcam or one of our authorized distributors