


Product datasheet

Anti-SerpinB6 antibody ab77372

1 图像

概述

<b>产品名称</b>	Anti-SerpinB6抗体
<b>描述</b>	山羊多克隆抗体to SerpinB6
<b>宿主</b>	Goat
<b>经测试应用</b>	<b>适用于:</b> WB, ELISA
<b>种属反应性</b>	<b>与反应:</b> Human <b>预测可用于:</b> Cynomolgus monkey, Orangutan 
<b>免疫原</b>	Synthetic peptide: NWDEQFDKENTEER (Human) from the internal region of the protein sequence according to NP_004559.4. <a href="#">Run BLAST with</a> <a href="#">Run BLAST with</a>
<b>阳性对照</b>	Human ovary lysates

性能

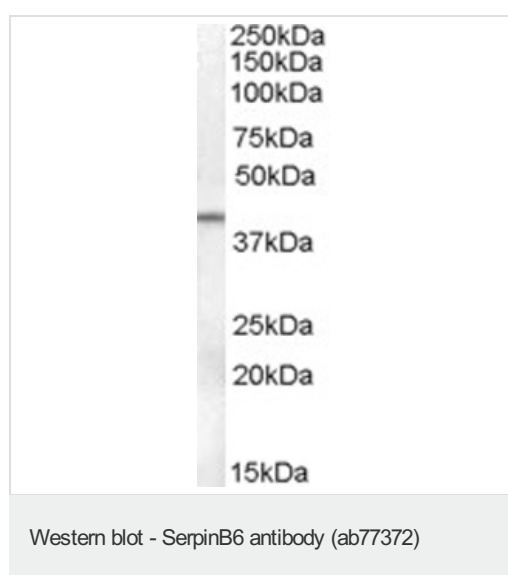
<b>形式</b>	Liquid
<b>存放说明</b>	Shipped at 4°C. Upon delivery aliquot and store at -20°C or -80°C. Avoid repeated freeze / thaw cycles.
<b>存储溶液</b>	Preservative: 0.02% Sodium Azide Constituents: 0.5% BSA, Tris buffered saline, pH 7.3
<b>纯度</b>	Immunogen affinity purified
<b>纯化说明</b>	Purified from goat serum by ammonium sulphate precipitation followed by antigen affinity chromatography using the immunizing peptide.
<b>克隆</b>	多克隆
<b>同种型</b>	IgG

应用

Our [Abpromise guarantee](#) covers the use of **ab77372** in the following tested applications.  
The application notes include recommended starting dilutions; optimal dilutions/concentrations should be determined by the end user.

应用	Ab评论	说明
WB		
ELISA		
<b>应用说明</b>	<p>Peptide ELISA: Antibody detection limit dilution 1/128000.</p> <p>WB: Use at a concentration of 0.1 - 0.3 µg/ml. Detects a band of approximately 42 kDa (predicted molecular weight: 42 kDa).</p> <p>Not yet tested in other applications.</p> <p>Optimal dilutions/concentrations should be determined by the end user.</p>	
<b>靶标</b>		
<b>功能</b>	<p>May be involved in the regulation of serine proteinases present in the brain or extravasated from the blood (By similarity). Inhibitor of cathepsin G, kallikrein-8 and thrombin. May play an important role in the inner ear in the protection against leakage of lysosomal content during stress and loss of this protection results in cell death and sensorineural hearing loss.</p>	
<b>组织特异性</b>	<p>Expressed in keratinocytes (at protein level). Highest levels in skeletal muscle. Also found in placenta, cardiac muscle, lung, liver, kidney and pancreas. Expressed in the inner ear hair cells. Expressed abundantly by normal mast cells in different tissues and by mast cells in mastocytoma lesions.</p>	
<b>疾病相关</b>	<p>Defects in SERPINB6 are the cause of deafness autosomal recessive type 91 (DFNB91) [MIM:613453]. It is a form of non-syndromic deafness characterized by progressive and age-dependent sensorineural hearing loss. Vestibular function is normal.</p>	
<b>序列相似性</b>	<p>Belongs to the serpin family. Ov-serpin subfamily.</p>	
<b>细胞定位</b>	<p>Cytoplasm.</p>	

## 图片



Anti-SerpinB6 antibody (ab77372) at 0.1 µg/ml + human ovary lysate in RIPA buffer at 35 µg

Developed using the ECL technique.

**Predicted band size:** 42 kDa

**Observed band size:** 42 kDa

**Please note:** All products are "FOR RESEARCH USE ONLY AND ARE NOT INTENDED FOR DIAGNOSTIC OR THERAPEUTIC USE"

### **Our Abpromise to you: Quality guaranteed and expert technical support**

---

- Replacement or refund for products not performing as stated on the datasheet
- Valid for 12 months from date of delivery
- Response to your inquiry within 24 hours
  
- We provide support in Chinese, English, French, German, Japanese and Spanish
- Extensive multi-media technical resources to help you
- We investigate all quality concerns to ensure our products perform to the highest standards

If the product does not perform as described on this datasheet, we will offer a refund or replacement. For full details of the Abpromise, please visit <http://www.abcam.cn/abpromise> or contact our technical team.

### **Terms and conditions**

---

- Guarantee only valid for products bought direct from Abcam or one of our authorized distributors