

Product datasheet

Anti-STAT6 antibody [YE361] ab32520

RabMAb

★★★★★ 1 Abreviews 7 References 14 图像

概述

产品名称	Anti-STAT6抗体[YE361]
描述	兔单克隆抗体[YE361] to STAT6
宿主	Rabbit
特异性	The antibody does not cross-react with other Stat family members.
经测试应用	适用于: WB, IHC-P, ICC/IF, IP, Flow Cyt
种属反应性	与反应: Mouse, Human
免疫原	Synthetic peptide within Human STAT6 aa 800 to the C-terminus (C terminal). The exact sequence is proprietary. Database link: P42226
阳性对照	NIH 3T3 cell lysate, human skin carcinoma tissue and HeLa cells.
常规说明	Rat: We have preliminary internal testing data to indicate this antibody may not react with these species. Please contact us for more information. Our RabMAb [®] technology is a patented hybridoma-based technology for making rabbit monoclonal antibodies. For details on our patents, please refer to RabMAb[®] patents We are constantly working hard to ensure we provide our customers with best in class antibodies. As a result of this work we are pleased to now offer this antibody in purified format. We are in the process of updating our datasheets. The purified format is designated 'PUR' on our product labels. If you have any questions regarding this update, please contact our Scientific Support team. This product is a recombinant rabbit monoclonal antibody.

性能

形式	Liquid
存放说明	Shipped at 4°C. Store at +4°C short term (1-2 weeks). Upon delivery aliquot. Store at -20°C. Avoid freeze / thaw cycle.
存储溶液	pH: 7.20 Preservative: 0.01% Sodium azide Constituents: 49% PBS, 40% Glycerol, 0.05% BSA
纯度	Protein A purified

克隆	单克隆
克隆编号	YE361
同种型	IgG

应用

Our [Abpromise guarantee](#) covers the use of **ab32520** in the following tested applications.

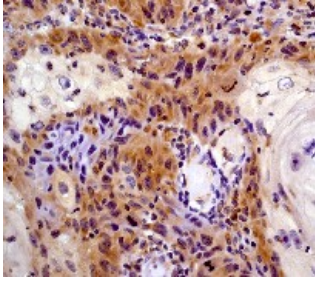
The application notes include recommended starting dilutions; optimal dilutions/concentrations should be determined by the end user.

应用	Ab评论	说明
WB	★★★★★	1/1000 - 1/2000. Detects a band of approximately 100 kDa (predicted molecular weight: 94 kDa).
IHC-P		1/50. Perform heat mediated antigen retrieval before commencing with IHC staining protocol. See protocols (link: http://www.abcam.com/protocols/ihc-antigen-retrieval-protocol).
ICC/IF		1/100.
IP		1/20 - 1/80.
Flow Cyt		Use at an assay dependent concentration.

靶标

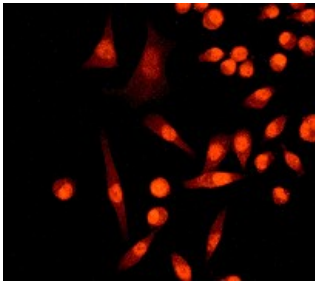
功能	Carries out a dual function: signal transduction and activation of transcription. Involved in interleukin-4 signalling.
序列相似性	Belongs to the transcription factor STAT family. Contains 1 SH2 domain.
翻译后修饰	Tyrosine phosphorylated following stimulation by IL-4 and IL-3.
细胞定位	Cytoplasm. Nucleus. Translocated into the nucleus in response to phosphorylation.

图片



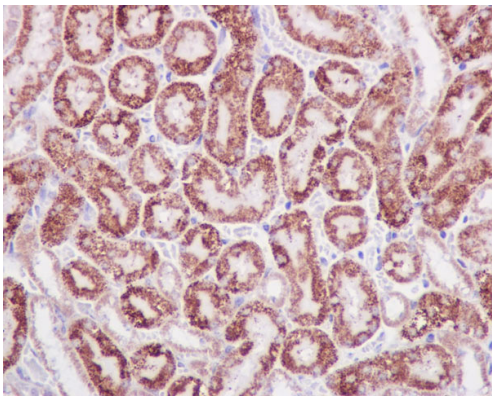
Immunohistochemistry (Formalin/PFA-fixed paraffin-embedded sections) - Anti-STAT6 antibody [YE361] (ab32520)

Immunohistochemistry (Formalin/PFA-fixed paraffin-embedded sections) analysis of human skin carcinoma tissue labelling STAT6 with unpurified ab32520 at 1/100.



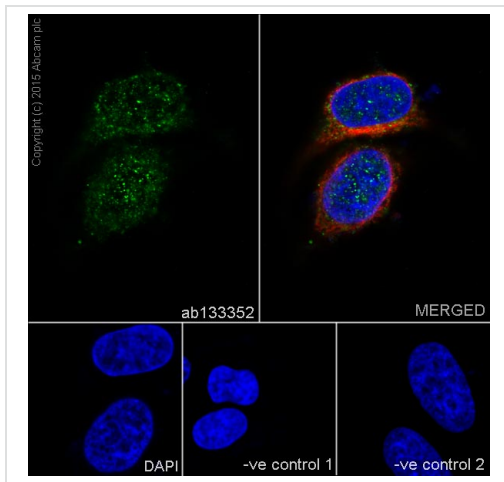
Immunocytochemistry/ Immunofluorescence - STAT6 antibody [YE361] (ab32520)

Immunocytochemistry/Immunofluorescence analysis of HeLa cells labelling STAT6 with unpurified ab32520 at 1/100.



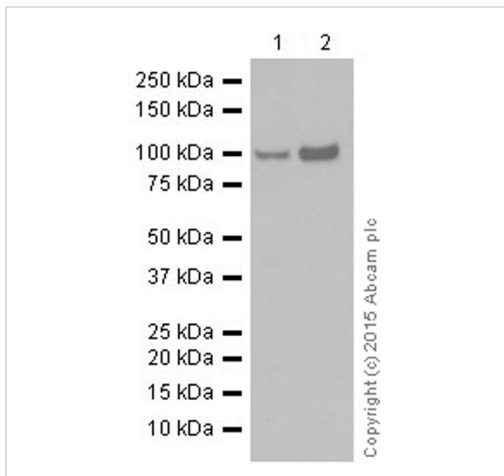
Immunohistochemistry (Formalin/PFA-fixed paraffin-embedded sections) - Anti-STAT6 antibody [YE361] (ab32520)

Immunohistochemistry (Formalin/PFA-fixed paraffin-embedded sections) analysis of mouse kidney tissue sections labelling STAT6 with unpurified ab32520 at a dilution of 1/1000. HRP goat anti-rabbit ([ab97051](#)) was used at a dilution of 1/500. The antigen retrieval solution was Tris-EDTA buffer, pH 9.0.



Immunocytochemistry/ Immunofluorescence - Anti-STAT6 antibody [YE361] (ab32520)

Immunofluorescence staining of HeLa cells with purified ab32520 at a working dilution of 1/100, counter-stained with DAPI. The secondary antibody was Alexa Fluor® 488 goat anti-rabbit (ab150077), used at a dilution of 1/1000. ab7291, a mouse anti-tubulin antibody (1/1000), was used to stain tubulin along with ab150120 (Alexa Fluor® 594 goat anti-mouse, 1/1000), shown in the top right hand panel. The cells were fixed in 4% PFA and permeabilized using 0.1% Triton X 100. The negative controls are shown in bottom middle and right hand panels - for negative control 1, purified ab32520 was used at a dilution of 1/500 followed by an Alexa Fluor® 594 goat anti-mouse antibody (ab150120) at a dilution of 1/500. For negative control 2, ab7291 (mouse anti-tubulin) was used at a dilution of 1/500 followed by an Alexa Fluor® 488 goat anti-rabbit antibody (ab150077) at a dilution of 1/400.



Western blot - Anti-STAT6 antibody [YE361] (ab32520)

All lanes : Anti-STAT6 antibody [YE361] (ab32520) at 1/1000 dilution (purified)

Lane 1 : NIH/3T3 cell lysate

Lane 2 : Raw 264.7 cell lysate

Lysates/proteins at 10 µg per lane.

Secondary

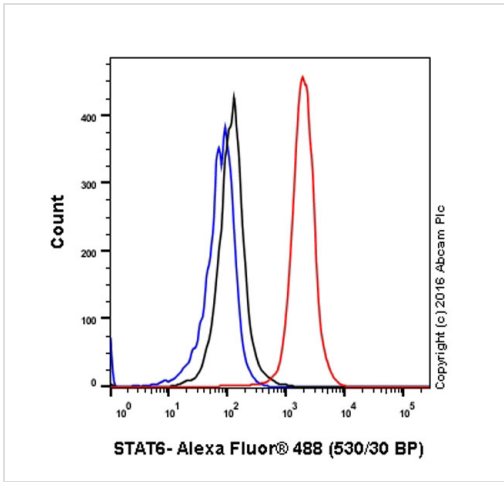
All lanes : HRP goat anti-rabbit IgG (H+L) at 1/20000 dilution

Predicted band size: 94 kDa

Observed band size: 100 kDa

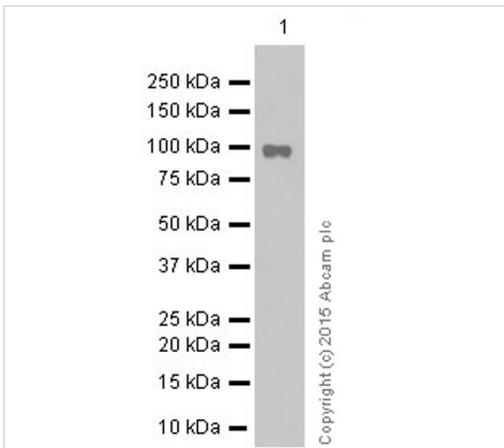
Blocking buffer: 5% NFDm/TBST

Dilution buffer: 5% NFDm/TBST



Flow Cytometry - Anti-STAT6 antibody [YE361]
(ab32520)

Flow Cytometry analysis of HeLa(human cervix adenocarcinoma) cells labeling STAT6 with purified ab32520 at 1/30 dilution(10ug/ml) (red). Cells were fixed with 4% paraformaldehyde and permeabilised with 90% methanol. A Goat anti rabbit IgG (Alexa Fluor® 488)(1:2000 dilution) was used as the secondary antibody. Rabbit monoclonal IgG (Black) was used as the isotype control, cells without incubation with primary antibody and secondary antibody (Blue) was used as the unlabeled control.



Western blot - Anti-STAT6 antibody [YE361]
(ab32520)

Anti-STAT6 antibody [YE361] (ab32520) at 1/20000 dilution (purified) + Raji cell lysate at 10 µg

Secondary

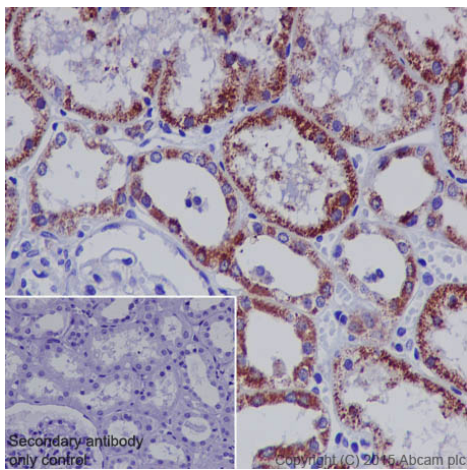
HRP goat anti-rabbit IgG (H+L) at 1/20000 dilution

Predicted band size: 94 kDa

Observed band size: 100 kDa

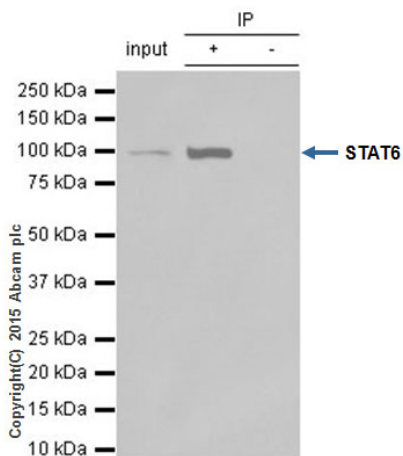
Blocking buffer: 5% NFDM/TBST

Dilution buffer: 5% NFDM/TBST



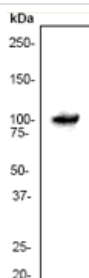
Immunohistochemistry (Formalin/PFA-fixed paraffin-embedded sections) - Anti-STAT6 antibody [YE361] (ab32520)

Immunohistochemical staining of paraffin embedded human kidney with purified ab32520 at a working dilution of 1/50. The secondary antibody used is HRP goat anti-rabbit IgG H&L (ab97051) at 1/500. The sample is counter-stained with hematoxylin. Antigen retrieval was performed using Tris-EDTA buffer, pH 9.0. PBS was used instead of the primary antibody as the negative control, and is shown in the inset.



Immunoprecipitation - Anti-STAT6 antibody [YE361] (ab32520)

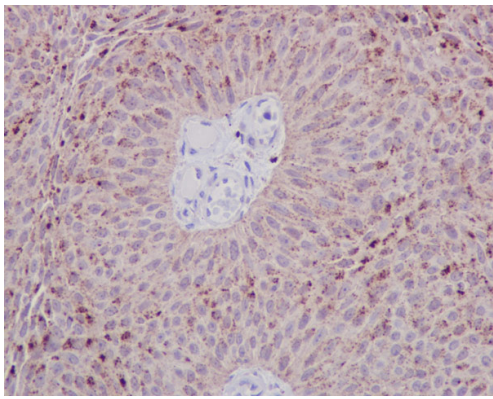
ab32520 (purified) at 1/20 immunoprecipitating STAT6 in 10 µg NIH/3T3 (Lanes 1 and 2, observed at 100 kDa). Lane 3 - PBS. For western blotting, HRP Veriblot for IP (ab131366) was used as the secondary antibody (1/10 000). Blocking buffer and concentration: 5% NFDm/TBST Dilution buffer and concentration: 5% NFDm/TBST



Western blot - STAT6 antibody [YE361] (ab32520)

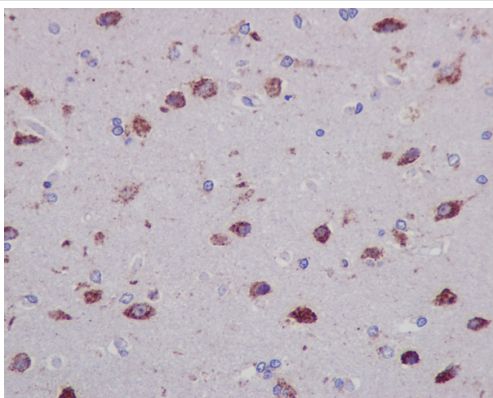
Anti-STAT6 antibody [YE361] (ab32520) at 1/1000 dilution (unpurified) + NIH 3T3 cell lysate

Predicted band size: 94 kDa
Observed band size: 100 kDa



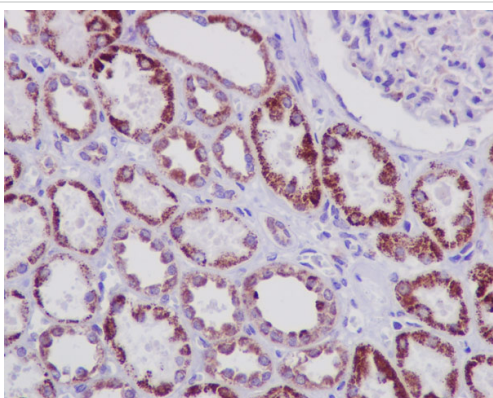
Immunohistochemistry (Formalin/PFA-fixed paraffin-embedded sections) - Anti-STAT6 antibody [YE361] (ab32520)

Immunohistochemistry (Formalin/PFA-fixed paraffin-embedded sections) analysis of human transitional cell carcinoma of bladder tissue sections labelling STAT6 with unpurified ab32520 at a dilution of 1/1000. HRP goat anti-rabbit ([ab97051](#)) was used at a dilution of 1/500. The antigen retrieval solution was Tris-EDTA buffer, pH 9.0.



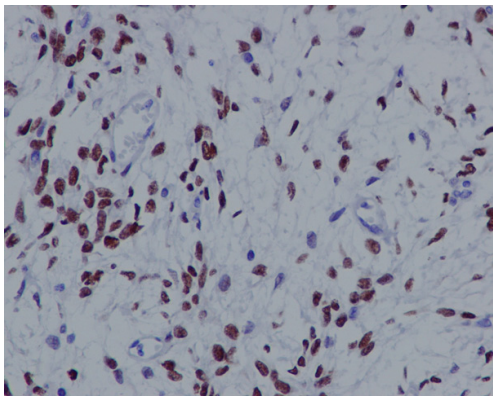
Immunohistochemistry (Formalin/PFA-fixed paraffin-embedded sections) - Anti-STAT6 antibody [YE361] (ab32520)

Immunohistochemistry (Formalin/PFA-fixed paraffin-embedded sections) analysis of human glioma tissue sections labelling STAT6 with unpurified ab32520 at a dilution of 1/1000. HRP goat anti-rabbit ([ab97051](#)) was used at a dilution of 1/500. The antigen retrieval solution was Tris-EDTA buffer, pH 9.0.



Immunohistochemistry (Formalin/PFA-fixed paraffin-embedded sections) - Anti-STAT6 antibody [YE361] (ab32520)

Immunohistochemistry (Formalin/PFA-fixed paraffin-embedded sections) analysis of human kidney tissue sections labelling STAT6 with unpurified ab32520 at a dilution of 1/1000. HRP goat anti-rabbit ([ab97051](#)) was used at a dilution of 1/500. The antigen retrieval solution was Tris-EDTA buffer, pH 9.0.



Immunohistochemistry (Formalin/PFA-fixed paraffin-embedded sections) - Anti-STAT6 antibody [YE361] (ab32520)

Immunohistochemistry (Formalin/PFA-fixed paraffin-embedded sections) analysis of human solitary fibrous tumor tissue sections labelling STAT6 with unpurified ab32520 at a dilution of 1/1000. HRP goat anti-rabbit (ab97051) was used at a dilution of 1/500. The antigen retrieval solution was Tris-EDTA buffer, pH 9.0.

Please note: All products are "FOR RESEARCH USE ONLY AND ARE NOT INTENDED FOR DIAGNOSTIC OR THERAPEUTIC USE"

Our Abpromise to you: Quality guaranteed and expert technical support

- Replacement or refund for products not performing as stated on the datasheet
- Valid for 12 months from date of delivery
- Response to your inquiry within 24 hours
- We provide support in Chinese, English, French, German, Japanese and Spanish
- Extensive multi-media technical resources to help you
- We investigate all quality concerns to ensure our products perform to the highest standards

If the product does not perform as described on this datasheet, we will offer a refund or replacement. For full details of the Abpromise, please visit <http://www.abcam.cn/abpromise> or contact our technical team.

Terms and conditions

- Guarantee only valid for products bought direct from Abcam or one of our authorized distributors