


Product datasheet

Anti-SOCS2 antibody ab66733

1 图像

概述

| | |
|-------|---|
| 产品名称 | Anti-SOCS2抗体 |
| 描述 | 兔多克隆抗体to SOCS2 |
| 宿主 | Rabbit |
| 经测试应用 | 适用于: WB |
| 种属反应性 | 与反应: Mouse, Human 预测可用于: Rat, Cow, Pig, Chimpanzee  |
| 免疫原 | Synthetic peptide conjugated to KLH derived from within residues 150 to the C-terminus of Human SOCS2 .参阅Abcam的专有抗源政策(Peptide available as ab66732 .) |
| 阳性对照 | This antibody gave a positive signal in the following whole cell lysates: HepG2, HeLa, SW480, Raji, MOLT4 and in Mouse Thymus tissue lysate |

性能

| | |
|------|--|
| 形式 | Liquid |
| 存放说明 | Shipped at 4°C. Store at +4°C short term (1-2 weeks). Upon delivery aliquot. Store at -20°C or -80°C. Avoid freeze / thaw cycle. |
| 存储溶液 | Preservative: 0.02% Sodium Azide Constituents: 1% BSA, PBS, pH 7.4 |
| 纯度 | Immunogen affinity purified |
| 克隆 | 多克隆 |
| 同种型 | IgG |

应用

Our [Abpromise guarantee](#) covers the use of **ab66733** in the following tested applications.

The application notes include recommended starting dilutions; optimal dilutions/concentrations should be determined by the end user.

| 应用 | Ab评论 | 说明 |
|----|------|--|
| WB | | Use a concentration of 1 µg/ml. Detects a band of approximately 22 kDa (predicted molecular weight: 22 kDa). |

靶标

功能

SOCS family proteins form part of a classical negative feedback system that regulates cytokine signal transduction. SOCS2 appears to be a negative regulator in the growth hormone/IGF1 signaling pathway. Probable substrate recognition component of a SCF-like ECS (Elongin BC-CUL2/5-SOCS-box protein) E3 ubiquitin-protein ligase complex which mediates the ubiquitination and subsequent proteasomal degradation of target proteins.

组织特异性

High expression in heart, placenta, lung, kidney and prostate.

通路

Protein modification; protein ubiquitination.

序列相似性

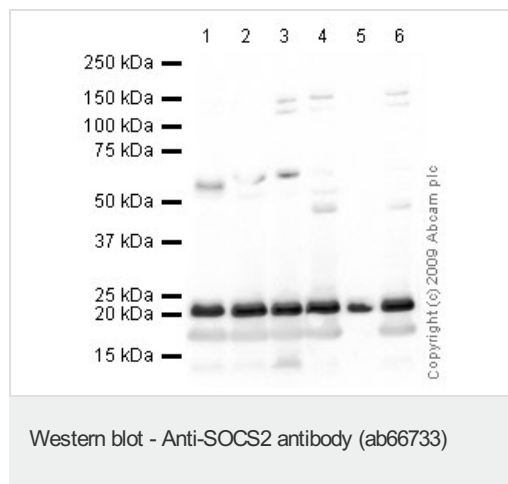
Contains 1 SH2 domain.

Contains 1 SOCS box domain.

结构域

The SOCS box domain mediates the interaction with the Elongin BC complex, an adapter module in different E3 ubiquitin ligase complexes.

图片



All lanes : Anti-SOCS2 antibody (ab66733)
at 1 µg/ml

Lane 1 : HepG2 (Human hepatocellular liver carcinoma cell line) Whole Cell Lysate

Lane 2 : HeLa (Human epithelial carcinoma cell line) Whole Cell Lysate

Lane 3 : SW480 whole cell lysate ([ab3957](#))

Lane 4 : Raji whole cell lysate ([ab30124](#))

Lane 5 : Mouse thymus tissue lysate - total protein ([ab29285](#))

Lane 6 : MOLT4 (Human acute lymphoblastic leukemia cell line) Whole Cell Lysate

Lysates/proteins at 10 µg per lane.

Secondary

All lanes : Goat polyclonal to Rabbit IgG -
H&L - Pre-Adsorbed (HRP) at 1/3000 dilution

Performed under reducing conditions.

Predicted band size: 22 kDa

Observed band size: 22 kDa

Please note: All products are "FOR RESEARCH USE ONLY AND ARE NOT INTENDED FOR DIAGNOSTIC OR THERAPEUTIC USE"

Our Abpromise to you: Quality guaranteed and expert technical support

- Replacement or refund for products not performing as stated on the datasheet
- Valid for 12 months from date of delivery
- Response to your inquiry within 24 hours

- We provide support in Chinese, English, French, German, Japanese and Spanish
- Extensive multi-media technical resources to help you
- We investigate all quality concerns to ensure our products perform to the highest standards

If the product does not perform as described on this datasheet, we will offer a refund or replacement. For full details of the Abpromise, please visit <http://www.abcam.cn/abpromise> or contact our technical team.

Terms and conditions

- Guarantee only valid for products bought direct from Abcam or one of our authorized distributors