


Product datasheet

Anti-SMRC2 antibody ab84453

2 图像

概述

产品名称	Anti-SMRC2抗体
描述	兔多克隆抗体to SMRC2
宿主	Rabbit
经测试应用	适用于: IHC-P
种属反应性	与反应: Mouse, Human 预测可用于: Rat, Rabbit, Horse, Cow, Dog, Pig, Chimpanzee, Rhesus monkey, Gorilla, Chinese hamster, Orangutan, Elephant 
免疫原	Synthetic peptide corresponding to a region between amino acid 1164 and the C terminus (amino acid 1214) of human SMRC2 (NP_003066.2).
阳性对照	Human controls: Anaplastic Thyroid Carcinoma, Bladder Cell Carcinoma, Breast Carcinoma, Colon Carcinoma, Laryngeal Squamous Cell Carcinoma, Linitis Plastica Stomach Cancer, Lung Adenocarcinoma, Metastatic Lymph Node, Non Small Cell Lung Cancer, Ovarian Carcinoma, Prostate Carcinoma, Skin Basal Cell Carcinoma, Stomach Adenocarcinoma and Testicular Seminoma. Mouse Control: Squamous Cell Carcinoma.

性能

形式	Liquid
存放说明	Shipped at 4°C. Upon delivery aliquot and store at -20°C. Avoid freeze / thaw cycles.
存储溶液	Preservative: 0.09% Sodium Azide Constituents: 0.1% BSA, Tris buffered saline
纯度	Immunogen affinity purified
纯化说明	ab84453 was affinity purified using an epitope specific to SMRC2 immobilized on solid support.
克隆	多克隆
同种型	IgG

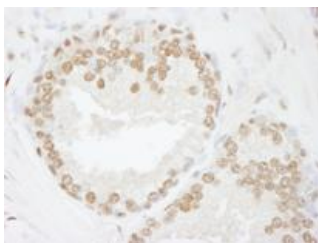
应用

Our [Abpromise guarantee](#) covers the use of **ab84453** in the following tested applications.

The application notes include recommended starting dilutions; optimal dilutions/concentrations should be determined by the end user.

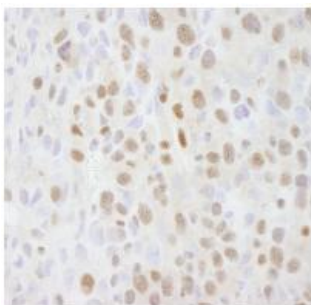
应用	Ab评论	说明
IHC-P		
应用说明	<p>IHC-P: 1/100 - 1/500.</p> <p>Epitope exposure is recommended. Epitope exposure with citrate buffer will enhance staining.</p> <p>Likely to work with frozen sections.</p> <p>Not yet tested in other applications.</p> <p>Optimal dilutions/concentrations should be determined by the end user.</p>	
靶标		
功能	<p>Involved in transcriptional activation and repression of select genes by chromatin remodeling (alteration of DNA-nucleosome topology). Can stimulate the ATPase activity of the catalytic subunit of these complexes. May be required for CoREST dependent repression of neuronal specific gene promoters in non-neuronal cells. Also involved in vitamin D-coupled transcription regulation via its association with the WINAC complex, a chromatin-remodeling complex recruited by vitamin D receptor (VDR), which is required for the ligand-bound VDR-mediated transrepression of the CYP27B1 gene. Belongs to the neural progenitors-specific chromatin remodeling complex (npBAF complex) and the neuron-specific chromatin remodeling complex (nBAF complex). During neural development a switch from a stem/progenitor to a post-mitotic chromatin remodeling mechanism occurs as neurons exit the cell cycle and become committed to their adult state. The transition from proliferating neural stem/progenitor cells to post-mitotic neurons requires a switch in subunit composition of the npBAF and nBAF complexes. As neural progenitors exit mitosis and differentiate into neurons, npBAF complexes which contain ACTL6A/BAF53A and PHF10/BAF45A, are exchanged for homologous alternative ACTL6B/BAF53B and DPF1/BAF45B or DPF3/BAF45C subunits in neuron-specific complexes (nBAF). The npBAF complex is essential for the self-renewal/proliferative capacity of the multipotent neural stem cells. The nBAF complex along with CREST plays a role regulating the activity of genes essential for dendrite growth.</p>	
组织特异性	Ubiquitously expressed.	
序列相似性	<p>Belongs to the SMARCC family.</p> <p>Contains 1 SANT domain.</p> <p>Contains 1 SWIRM domain.</p>	
细胞定位	Nucleus.	

图片



Immunohistochemistry (Formalin/PFA-fixed paraffin-embedded sections) - SMRC2 antibody (ab84453)

ab84453, at a 1/500 dilution, staining SMRC2 in formalin fixed, paraffin embedded human prostate adenocarcinoma by Immunohistochemistry.
Detection: using DAB staining.



Immunohistochemistry (Formalin/PFA-fixed paraffin-embedded sections) - SMRC2 antibody (ab84453)

ab84453, at 1/500 dilution, staining SMRC2 in formalin fixed, paraffin embedded mouse squamous cell carcinoma by Immunohistochemistry.
Detection: using DAB staining.

Please note: All products are "FOR RESEARCH USE ONLY AND ARE NOT INTENDED FOR DIAGNOSTIC OR THERAPEUTIC USE"

Our Abpromise to you: Quality guaranteed and expert technical support

- Replacement or refund for products not performing as stated on the datasheet
- Valid for 12 months from date of delivery
- Response to your inquiry within 24 hours
- We provide support in Chinese, English, French, German, Japanese and Spanish
- Extensive multi-media technical resources to help you
- We investigate all quality concerns to ensure our products perform to the highest standards

If the product does not perform as described on this datasheet, we will offer a refund or replacement. For full details of the Abpromise, please visit <http://www.abcam.cn/abpromise> or contact our technical team.

Terms and conditions

- Guarantee only valid for products bought direct from Abcam or one of our authorized distributors