

## Product datasheet

# Anti-SMCR7L antibody ab89944

★★★★☆ 1 Abreviews 1 图像

### 概述

<b>产品名称</b>	Anti-SMCR7L抗体
<b>描述</b>	兔多克隆抗体to SMCR7L
<b>经测试应用</b>	<b>适用于:</b> WB
<b>种属反应性</b>	<b>与反应:</b> Human <b>预测可用于:</b> Mouse, Rat, Rabbit, Horse, Guinea pig, Cow, Cat, Dog
<b>免疫原</b>	Synthetic peptide corresponding to a region within the N terminal amino acids 36-85 (AAMLGIATLA VKRMYDRAIS APTSPTRL SH SGKRSWEEP N WMGSPRLLNR) of human SMCR7L (NP_061881). <a href="#">Run BLAST with ExPASy</a> <a href="#">Run BLAST with NCBI</a>
<b>阳性对照</b>	HT1080 cell lysate

### 性能

<b>形式</b>	Liquid
<b>存放说明</b>	Shipped at 4°C. Upon delivery aliquot and store at -20°C. Avoid repeated freeze / thaw cycles.
<b>存储溶液</b>	Preservative: None Constituents: 2% Sucrose, PBS
<b>纯度</b>	Immunogen affinity purified
<b>纯化说明</b>	Purified by peptide affinity chromatography method.
<b>克隆</b>	多克隆
<b>同种型</b>	IgG

### 应用

Our [Abpromise guarantee](#) covers the use of **ab89944** in the following tested applications.

The application notes include recommended starting dilutions; optimal dilutions/concentrations should be determined by the end user.

应用	Ab评论	说明

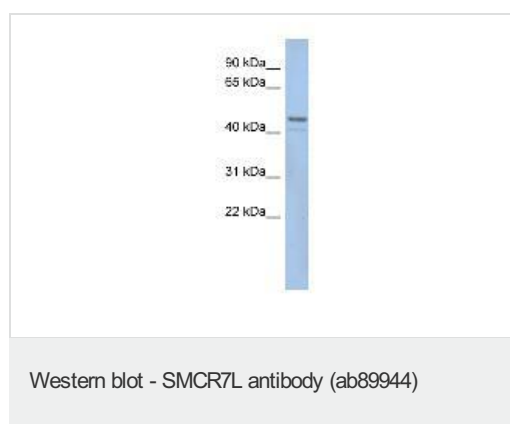
应用	Ab评论	说明
----	------	----

WB ★★★★★ Use a concentration of 1 µg/ml. Predicted molecular weight: 51 kDa. Good results were obtained when blocked with 5% non-fat dry milk in 0.05% PBS-T.

## 靶标

**序列相似性** Belongs to the SMCR7 family.  
**细胞定位** Membrane.

## 图片



Anti-SMCR7L antibody (ab89944) at 1 µg/ml (in 5% skim milk / PBS buffer) + HT1080 cell lysate at 10 µg

### Secondary

HRP conjugated anti-Rabbit IgG at 1/50000 dilution

**Predicted band size** : 51 kDa

**Observed band size** : ~51 kDa

**Additional bands at** : ~42 kDa. We are unsure as to the identity of these extra bands.

**Please note:** All products are "FOR RESEARCH USE ONLY AND ARE NOT INTENDED FOR DIAGNOSTIC OR THERAPEUTIC USE"

## Our Abpromise to you: Quality guaranteed and expert technical support

- Replacement or refund for products not performing as stated on the datasheet
- Valid for 12 months from date of delivery
- Response to your inquiry within 24 hours
- We provide support in Chinese, English, French, German, Japanese and Spanish
- Extensive multi-media technical resources to help you
- We investigate all quality concerns to ensure our products perform to the highest standards

If the product does not perform as described on this datasheet, we will offer a refund or replacement. For full details of the Abpromise, please visit <http://www.abcam.cn/abpromise> or contact our technical team.

## Terms and conditions

- Guarantee only valid for products bought direct from Abcam or one of our authorized distributors