


Product datasheet

Anti-SMARCC1 antibody ab22355

★★★★☆ 1 Abreviews 3 图像

概述

| | |
|-------|--|
| 产品名称 | Anti-SMARCC1抗体 |
| 描述 | 兔多克隆抗体to SMARCC1 |
| 经测试应用 | 适用于: ICC/IF, WB, IHC-P |
| 种属反应性 | 与反应: Human 预测可用于: Mouse, Rat, Chicken, Dog  |
| 免疫原 | Synthetic peptide conjugated to KLH derived from within residues 300 - 400 of Human SMARCC1. 参阅Abcam的专有抗源政策 (Peptide available as ab24351 .) |
| 阳性对照 | This antibody gave a positive signal for Western Blot in HeLa whole cell lysate. This antibody gave a positive signal for Immunofluorescence in HeLa cells. |

性能

| | |
|------|--|
| 形式 | Liquid |
| 存放说明 | Shipped at 4°C. Store at +4°C short term (1-2 weeks). Upon delivery aliquot. Store at -20°C or -80°C. Avoid freeze / thaw cycle. |
| 存储溶液 | Preservative: 0.02% Sodium Azide Constituents: 1% BSA, PBS, pH 7.4 |
| 纯度 | Immunogen affinity purified |
| 克隆 | 多克隆 |
| 同种型 | IgG |

应用

Our [Abpromise guarantee](#) covers the use of **ab22355** in the following tested applications.

The application notes include recommended starting dilutions; optimal dilutions/concentrations should be determined by the end user.

| 应用 | Ab评论 | 说明 |
|--------|------|---------------------------------|
| ICC/IF | | Use a concentration of 1 µg/ml. |

| 应用 | Ab评论 | 说明 |
|-------|-------|--|
| WB | ★★★★★ | Use a concentration of 1 µg/ml. Detects a band of approximately 150 kDa (predicted molecular weight: 122 kDa). |
| IHC-P | | 1/2000. Perform heat mediated antigen retrieval before commencing with IHC staining protocol. |

靶标

功能

Involved in transcriptional activation and repression of select genes by chromatin remodeling (alteration of DNA-nucleosome topology). May stimulate the ATPase activity of the catalytic subunit of the complex. Also involved in vitamin D-coupled transcription regulation via its association with the WINAC complex, a chromatin-remodeling complex recruited by vitamin D receptor (VDR), which is required for the ligand-bound VDR-mediated transrepression of the CYP27B1 gene. Belongs to the neural progenitors-specific chromatin remodeling complex (npBAF complex) and the neuron-specific chromatin remodeling complex (nBAF complex). During neural development a switch from a stem/progenitor to a post-mitotic chromatin remodeling mechanism occurs as neurons exit the cell cycle and become committed to their adult state. The transition from proliferating neural stem/progenitor cells to post-mitotic neurons requires a switch in subunit composition of the npBAF and nBAF complexes. As neural progenitors exit mitosis and differentiate into neurons, npBAF complexes which contain ACTL6A/BAF53A and PHF10/BAF45A, are exchanged for homologous alternative ACTL6B/BAF53B and DPF1/BAF45B or DPF3/BAF45C subunits in neuron-specific complexes (nBAF). The npBAF complex is essential for the self-renewal/proliferative capacity of the multipotent neural stem cells. The nBAF complex along with CREST plays a role regulating the activity of genes essential for dendrite growth.

组织特异性

Expressed in brain, heart, muscle, placenta, lung, liver, muscle, kidney and pancreas.

序列相似性

Belongs to the SMARCC family.

Contains 1 SANT domain.

Contains 1 SWIRM domain.

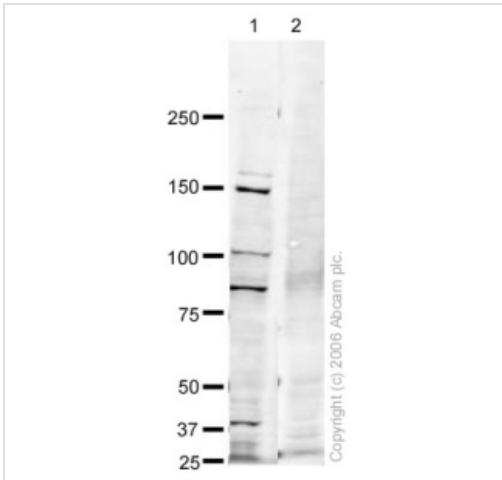
翻译后修饰

Phosphorylated on undefined residues at the G2/M transition by ERK1 and other kinases. This may contribute to cell cycle specific inactivation of remodeling complexes containing the phosphorylated protein.

细胞定位

Nucleus.

图片



Western blot - SMARCC1 antibody (ab22355)

All lanes : Anti-SMARCC1 antibody (ab22355) at 1 µg/ml

Lane 1 : HeLa (Human epithelial carcinoma cell line) Whole Cell Lysate at 20 µg

Lane 2 : HeLa (Human epithelial carcinoma cell line) Whole Cell Lysate at 20 µg with Human SMARCC1 peptide (ab24351) at 1 µg/ml

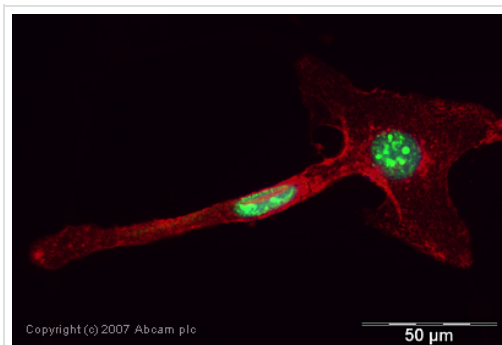
Secondary

Goat polyclonal to Rabbit IgG (Alexa Fluor® 680) at 1/10000 dilution

Predicted band size : 122 kDa

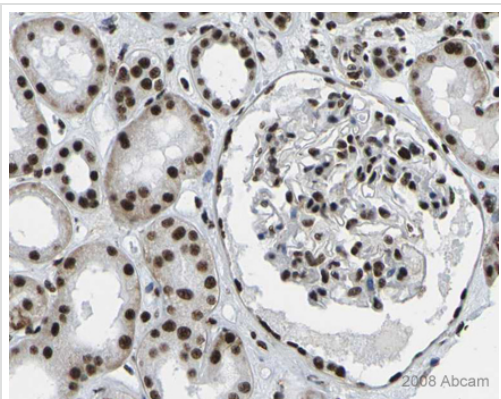
Observed band size : 150 kDa

Additional bands at : 100 kDa (possible cleavage fragment,cross reactivity),40 kDa (possible cleavage fragment,cross reactivity),85 kDa (possible cleavage fragment,cross reactivity).



Immunocytochemistry/ Immunofluorescence - SMARCC1 antibody (ab22355)

ICC/IF image of ab22355 stained human HeLa cells. The cells were methanol fixed (5 min), permabilised in TBS-T (20 min) and incubated with the antibody (ab22355, 1 µg/ml) for 1h at room temperature. 1%BSA / 10% normal goat serum / 0.3M glycine was used to quench autofluorescence and block non-specific protein-protein interactions. The secondary antibody (green) was Alexa Fluor® 488 goat anti-rabbit IgG (H+L) used at a 1/1000 dilution for 1h. Alexa Fluor® 594 WGA was used to label plasma membranes (red). DAPI was used to stain the cell nuclei (blue).



Immunohistochemistry (Formalin/PFA-fixed paraffin-embedded sections) - SMARCC1 antibody (ab22355)

Image courtesy of [Human Protein Atlas](#)

ab22355 staining SMARCC1 in human kidney. Paraffin embedded human kidney tissue was incubated with ab22355 (1/2000 dilution) for 30 mins at room temperature. Antigen retrieval was performed by heat induction in citrate buffer pH 6.

ab22355 was tested in a tissue microarray (TMA) containing a wide range of normal and cancer tissues as well as a cell microarray consisting of a range of commonly used, well characterised human cell lines.

Further results for this antibody can be found at www.proteinatlas.org

Please note: All products are "FOR RESEARCH USE ONLY AND ARE NOT INTENDED FOR DIAGNOSTIC OR THERAPEUTIC USE"

Our Abpromise to you: Quality guaranteed and expert technical support

- Replacement or refund for products not performing as stated on the datasheet
- Valid for 12 months from date of delivery
- Response to your inquiry within 24 hours
- We provide support in Chinese, English, French, German, Japanese and Spanish
- Extensive multi-media technical resources to help you
- We investigate all quality concerns to ensure our products perform to the highest standards

If the product does not perform as described on this datasheet, we will offer a refund or replacement. For full details of the Abpromise, please visit <http://www.abcam.cn/abpromise> or contact our technical team.

Terms and conditions

- Guarantee only valid for products bought direct from Abcam or one of our authorized distributors