

Product datasheet

Anti-SLFN12 antibody ab113238

3 图像

概述

产品名称	Anti-SLFN12抗体
描述	兔多克隆抗体to SLFN12
宿主	Rabbit
经测试应用	适用于: WB, ELISA, IHC-P
种属反应性	与反应: Human
免疫原	Synthetic peptide from near the C-terminal region of Human SLFN12.
阳性对照	Human prostate and colon tissue; SK N SH cell lysate.

性能

形式	Liquid
存放说明	Shipped at 4°C. Store at +4°C short term (1-2 weeks). Store at -20°C or -80°C. Avoid freeze / thaw cycle.
存储溶液	Preservative: 0.02% Sodium azide Constituent: 99.98% PBS
纯度	Protein A purified
克隆	多克隆
同种型	IgG

应用

Our [Abpromise guarantee](#) covers the use of **ab113238** in the following tested applications.

The application notes include recommended starting dilutions; optimal dilutions/concentrations should be determined by the end user.

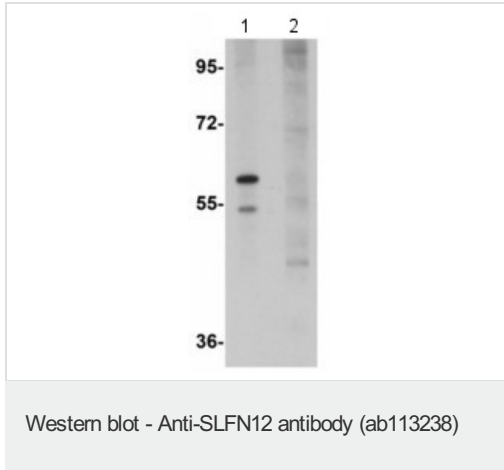
应用	Ab评论	说明
WB		Use a concentration of 1 - 2 µg/ml. Predicted molecular weight: 67 kDa.
ELISA		Use at an assay dependent concentration.
IHC-P		Use a concentration of 2.5 - 5 µg/ml.

## 靶标

### 序列相似性

Belongs to the Schlafen family.

## 图片



**All lanes :** Anti-SLFN12 antibody (ab113238)  
at 1  $\mu$ g/ml

**Lane 1 :** SK N SH cell lysate

**Lane 2 :** SK N SH cell lysate with blocking  
peptide

**Predicted band size:** 67 kDa



ab113238 at 5 $\mu$ g/ml staining SLFN12 in  
Formalin-fixed, Paraffin-embedded Human  
prostate tissue by Immunohistochemistry.



ab113238 at 5 $\mu$ g/ml staining SLFN12 in  
Formalin-fixed, Paraffin-embedded Human  
colon tissue by Immunohistochemistry.

**Please note:** All products are "FOR RESEARCH USE ONLY AND ARE NOT INTENDED FOR DIAGNOSTIC OR THERAPEUTIC USE"

**Our Promise to you: Quality guaranteed and expert technical support**

- Replacement or refund for products not performing as stated on the datasheet
- Valid for 12 months from date of delivery
- Response to your inquiry within 24 hours
  
- We provide support in Chinese, English, French, German, Japanese and Spanish
- Extensive multi-media technical resources to help you
- We investigate all quality concerns to ensure our products perform to the highest standards

If the product does not perform as described on this datasheet, we will offer a refund or replacement. For full details of the Abpromise, please visit <http://www.abcam.cn/abpromise> or contact our technical team.

### **Terms and conditions**

---

- Guarantee only valid for products bought direct from Abcam or one of our authorized distributors