

## Product datasheet

# Anti-SLC38A1 antibody ab60145

1 References 2 图像

### 概述

产品名称	Anti-SLC38A1抗体
描述	兔多克隆抗体to SLC38A1
经测试应用	适用于: WB, IHC-P
种属反应性	与反应: Human 预测可用于: Rat, Horse, Guinea pig, Cow, Cat, Dog
免疫原	A region within synthetic peptide: YLGYTSGFSL SCMVFLLMV YKKFQIPCI VPELNSTISA NSTNADTCTP, corresponding to internal sequence amino acids 217-266 of Human SLC38A1 <a href="#">Run BLAST with ExPASy</a> <a href="#">Run BLAST with NCBI</a>
阳性对照	HepG2 cell lysate; human kidney tissue

### 性能

形式	Liquid
存放说明	Shipped at 4°C. Upon delivery aliquot and store at -20°C. Avoid freeze / thaw cycles.
存储溶液	Preservative: None Constituents: 2% Sucrose, PBS
纯度	Protein A purified
克隆	多克隆
同种型	IgG

### 应用

Our [Abpromise guarantee](#) covers the use of **ab60145** in the following tested applications.

The application notes include recommended starting dilutions; optimal dilutions/concentrations should be determined by the end user.

应用	Ab 评论	说明
WB		Use a concentration of 1.25 µg/ml. Detects a band of approximately 48 kDa (predicted molecular weight: 59 kDa). Good results were obtained when blocked with 5% non-fat dry milk in 0.05% PBS-T.

应用	Ab 评论	说明
----	-------	----

IHC-P Use a concentration of 4 - 8 µg/ml.

## 靶标

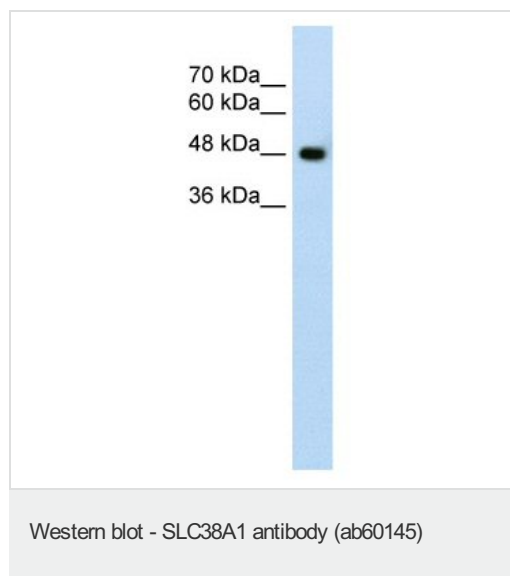
**功能** Functions as a sodium-dependent amino acid transporter. Mediates the saturable, pH-sensitive and electrogenic cotransport of glutamine and sodium ions with a stoichiometry of 1:1. May also transport small zwitterionic and aliphatic amino acids with a lower affinity. May supply glutamatergic and GABAergic neurons with glutamine which is required for the synthesis of the neurotransmitters glutamate and GABA.

**组织特异性** Expressed in the cerebral cortex by pyramidal and GABAergic neurons, astrocytes and other non-neuronal cells (at protein level). Expressed in placenta, heart, lung, skeletal muscle, spleen, stomach and testis.

**序列相似性** Belongs to the amino acid/polyamine transporter 2 family.

**细胞定位** Cell membrane. Restricted to the somatodendritic compartment of neurons. Found in the cellular processes of neurons in the developing brain (By similarity).

## 图片



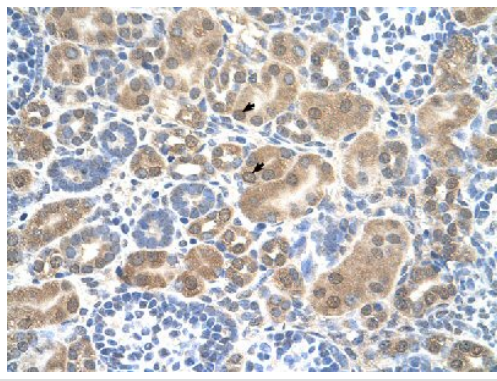
Anti-SLC38A1 antibody (ab60145) at 1.25 µg/ml + HepG2 cell lysate at 10 µg

### Secondary

HRP-conjugated anti-Rabbit IgG at 1/50000 dilution

**Predicted band size** : 59 kDa

**Observed band size** : 48 kDa



Immunohistochemistry (Formalin/PFA-fixed paraffin-embedded sections) analysis of human kidney tissue labelling SLC38A1 with ab60145 at 4-8µg/ml. Arrows indicate positively labelled epithelial cells of the renal tubule. Magnification: 400X.

Immunohistochemistry (Formalin/PFA-fixed paraffin-embedded sections) - SLC38A1 antibody (ab60145)

**Please note:** All products are "FOR RESEARCH USE ONLY AND ARE NOT INTENDED FOR DIAGNOSTIC OR THERAPEUTIC USE"

### Our Abpromise to you: Quality guaranteed and expert technical support

---

- Replacement or refund for products not performing as stated on the datasheet
- Valid for 12 months from date of delivery
- Response to your inquiry within 24 hours
- We provide support in Chinese, English, French, German, Japanese and Spanish
- Extensive multi-media technical resources to help you
- We investigate all quality concerns to ensure our products perform to the highest standards

If the product does not perform as described on this datasheet, we will offer a refund or replacement. For full details of the Abpromise, please visit <http://www.abcam.cn/abpromise> or contact our technical team.

### Terms and conditions

---

- Guarantee only valid for products bought direct from Abcam or one of our authorized distributors