

Product datasheet

Anti-SLC22A3 antibody [EPR6630] ab124826

重组 RabMAb[®]

5 References 4 图像

概述

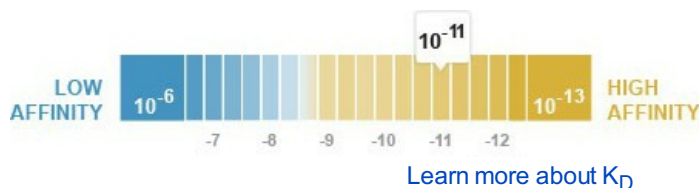
产品名称	Anti-SLC22A3抗体[EPR6630]
描述	兔单克隆抗体[EPR6630] to SLC22A3
宿主	Rabbit
经测试应用	适用于: WB, IHC-P, Flow Cyt 不适用于: IP
种属反应性	与反应: Human
免疫原	Synthetic peptide within Human SLC22A3 aa 300-400. The exact sequence is proprietary.
阳性对照	Human fetal kidney, Human muscle and Human placenta lysates; Human kidney tissue
常规说明	Mouse, Rat: We have preliminary internal testing data to indicate this antibody may not react with these species. Please contact us for more information.

Our RabMAb[®] technology is a patented hybridoma-based technology for making rabbit monoclonal antibodies. For details on our patents, please refer to [RabMAb[®] patents](#)

This product is a recombinant rabbit monoclonal antibody.

性能

形式	Liquid
存放说明	Shipped at 4°C. Store at -20°C. Stable for 12 months at -20°C.
解离常数 (K_D)	K _D = 4.75 x 10 ⁻¹¹ M



存储溶液	pH: 7.20 Preservative: 0.01% Sodium azide Constituents: 49% PBS, 50% Glycerol, 0.05% BSA
纯度	Tissue culture supernatant

克隆	单克隆
克隆编号	EPR6630
同种型	IgG

应用

Our [Abpromise guarantee](#) covers the use of **ab124826** in the following tested applications.

The application notes include recommended starting dilutions; optimal dilutions/concentrations should be determined by the end user.

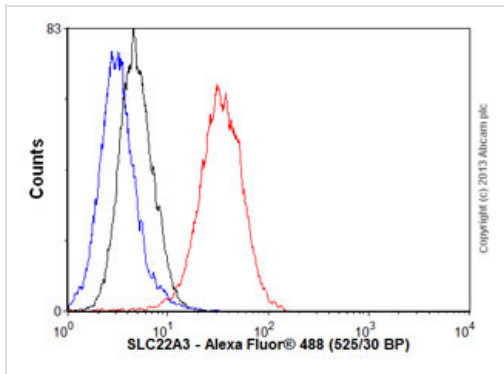
应用	Ab评论	说明
WB		1/10000 - 1/50000. Detects a band of approximately 80 kDa (predicted molecular weight: 61 kDa).
IHC-P		1/100 - 1/250. Perform heat mediated antigen retrieval before commencing with IHC staining protocol.
Flow Cyt		1/100. ab172730 - Rabbit monoclonal IgG, is suitable for use as an isotype control with this antibody.

应用说明 Is unsuitable for IP.

靶标

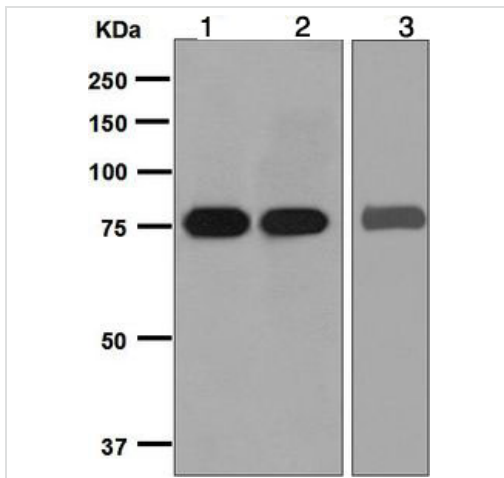
功能	Mediates potential-dependent transport of a variety of organic cations. May play a significant role in the disposition of cationic neurotoxins and neurotransmitters in the brain.
组织特异性	Expressed in placenta, skeletal muscle, prostate, aorta, liver, fetal lung, salivary gland, adrenal gland, kidney and brain cortex. No expression detected in spleen.
序列相似性	Belongs to the major facilitator superfamily. Organic cation transporter family.
细胞定位	Membrane.

图片



Flow Cytometry - Anti-SLC22A3 antibody [EPR6630] (ab124826)

Overlay histogram showing JEG3 cells stained with ab124826 (red line). The cells were fixed with 80% methanol (5 min) and then permeabilized with 0.1% PBS-Tween for 20 min. The cells were then incubated in 1x PBS / 10% normal goat serum / 0.3M glycine to block non-specific protein-protein interactions followed by the antibody (ab124826, 1/100 dilution) for 30 min at 22°C. The secondary antibody used was Alexa Fluor® 488 goat anti-rabbit IgG (H&L) (ab150077) at 1/2000 dilution for 30 min at 22°C. Isotype control antibody (black line) was rabbit IgG (monoclonal) (0.1µg/1x10⁶ cells) used under the same conditions. Unlabelled sample (blue line) was also used as a control. Acquisition of >5,000 events were collected using a 20mW Argon ion laser (488nm) and 525/30 bandpass filter.



Western blot - Anti-SLC22A3 antibody [EPR6630] (ab124826)

All lanes : Anti-SLC22A3 antibody [EPR6630] (ab124826) at 1/10000 dilution

Lane 1 : Human fetal kidney lysate

Lane 2 : Human muscle lysate

Lane 3 : Human placenta lysate

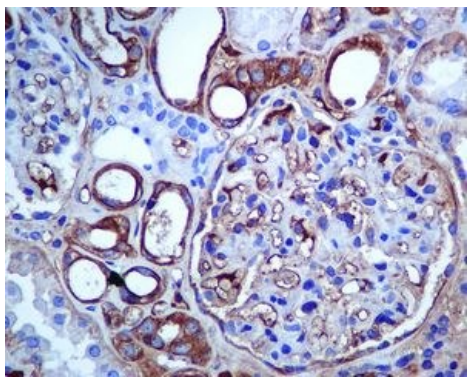
Lysates/proteins at 10 µg per lane.

Secondary

All lanes : HRP labelled goat anti-rabbit at 1/2000 dilution

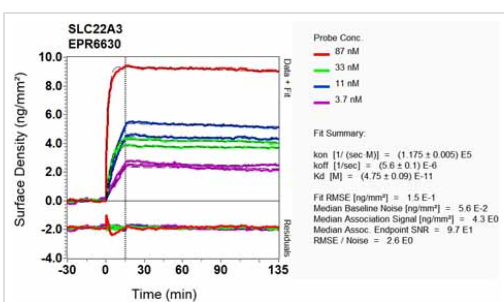
Predicted band size: 61 kDa

Observed band size: 80 kDa



ab124826, at 1/100 dilution, staining SLC22A3 in paraffin-embedded Human kidney tissue by Immunohistochemistry.

Immunohistochemistry (Formalin/PFA-fixed paraffin-embedded sections) - Anti-SLC22A3 antibody [EPR6630] (ab124826)



Equilibrium dissociation constant (K_D)

Learn more about K_D

[Click here to learn more about \$K_D\$](#)

Other - Anti-SLC22A3 antibody [EPR6630] (ab124826)

Please note: All products are "FOR RESEARCH USE ONLY AND ARE NOT INTENDED FOR DIAGNOSTIC OR THERAPEUTIC USE"

Our Abpromise to you: Quality guaranteed and expert technical support

- Replacement or refund for products not performing as stated on the datasheet
- Valid for 12 months from date of delivery
- Response to your inquiry within 24 hours
- We provide support in Chinese, English, French, German, Japanese and Spanish
- Extensive multi-media technical resources to help you
- We investigate all quality concerns to ensure our products perform to the highest standards

If the product does not perform as described on this datasheet, we will offer a refund or replacement. For full details of the Abpromise, please visit <http://www.abcam.cn/abpromise> or contact our technical team.

Terms and conditions

- Guarantee only valid for products bought direct from Abcam or one of our authorized distributors