

Product datasheet

Anti-SKI antibody ab19864

★★★★☆ 1 Abreviews 2 References 2 图像

概述

产品名称	Anti-SKI抗体
描述	兔多克隆抗体to SKI
宿主	Rabbit
经测试应用	适用于: ICC/IF, WB
种属反应性	与反应: Mouse, Human 预测可用于: Rat, Horse, Chicken, Dog, Xenopus laevis
免疫原	Synthetic peptide conjugated to KLH derived from within residues 600 - 700 of Human c-Ski. 参阅Abcam的专有抗源政策 (Peptide available as ab20438 .)
阳性对照	This antibody gave a positive signal in Hela Whole Cell Lysate.

性能

形式	Liquid
存放说明	Shipped at 4°C. Store at +4°C short term (1-2 weeks). Upon delivery aliquot. Store at -20°C or -80°C. Avoid freeze / thaw cycle.
存储溶液	Preservative: 0.02% Sodium Azide Constituents: 1% BSA, PBS, pH 7.4
纯度	Immunogen affinity purified
克隆	多克隆
同种型	IgG

应用

Our [Abpromise guarantee](#) covers the use of **ab19864** in the following tested applications.

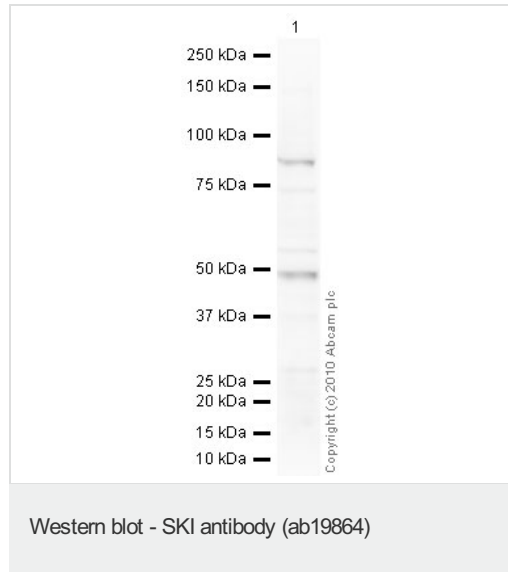
The application notes include recommended starting dilutions; optimal dilutions/concentrations should be determined by the end user.

应用	Ab评论	说明
ICC/IF		Use a concentration of 5 µg/ml.
WB	★★★★☆	Use a concentration of 1 µg/ml. Detects a band of approximately 85 kDa (predicted molecular weight: 80 kDa).

靶标

功能	May play a role in terminal differentiation of skeletal muscle cells but not in the determination of cells to the myogenic lineage. Functions as a repressor of TGF-beta signaling.
序列相似性	Belongs to the SKI family.
细胞定位	Nucleus.

图片



Anti-SKI antibody (ab19864) at 1 $\mu\text{g/ml}$ +
HeLa (Human epithelial carcinoma cell line)
Whole Cell Lysate at 20 μg

Secondary

Goat polyclonal to Rabbit IgG - H&L - Pre-
Adsorbed (HRP) at 1/3000 dilution

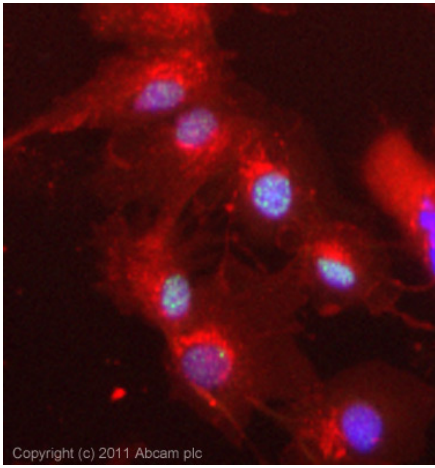
Performed under reducing conditions.

Predicted band size: 80 kDa

Observed band size: 85 kDa

Additional bands at: 49 kDa. We are unsure
as to the identity of these extra bands.

Exposure time: 15 minutes



Immunocytochemistry/ Immunofluorescence - Anti-SKI antibody (ab19864)

ICC/IF image of ab19864 stained HepG2 cells. The cells were 100% methanol fixed (5 min) and then incubated in 1%BSA / 10% normal goat serum / 0.3M glycine in 0.1% PBS-Tween for 1h to permeabilise the cells and block non-specific protein-protein interactions. The cells were then incubated with the antibody (ab19864, 5µg/ml) overnight at +4°C. The secondary antibody (green) was ab96899 Dylight 488 goat anti-rabbit IgG (H+L) used at a 1/250 dilution for 1h. Alexa Fluor® 594 WGA was used to label plasma membranes (red) at a 1/200 dilution for 1h. DAPI was used to stain the cell nuclei (blue) at a concentration of 1.43µM.

Please note: All products are "FOR RESEARCH USE ONLY AND ARE NOT INTENDED FOR DIAGNOSTIC OR THERAPEUTIC USE"

Our Abpromise to you: Quality guaranteed and expert technical support

- Replacement or refund for products not performing as stated on the datasheet
- Valid for 12 months from date of delivery
- Response to your inquiry within 24 hours
- We provide support in Chinese, English, French, German, Japanese and Spanish
- Extensive multi-media technical resources to help you
- We investigate all quality concerns to ensure our products perform to the highest standards

If the product does not perform as described on this datasheet, we will offer a refund or replacement. For full details of the Abpromise, please visit <http://www.abcam.cn/abpromise> or contact our technical team.

Terms and conditions

- Guarantee only valid for products bought direct from Abcam or one of our authorized distributors