

Product datasheet

Anti-SGK1 antibody ab59337

8 References 4 图像

概述

产品名称	Anti-SGK1抗体
描述	兔多克隆抗体to SGK1
特异性	Detects endogenous levels of total SGK protein.
经测试应用	适用于: ICC/IF, WB, ELISA, IHC-FoFr, IHC-P
种属反应性	与反应: Mouse, Rat, Human
免疫原	Synthesized non-phosphopeptide derived from human SGK1 around the phosphorylation site of serine 78 (P-P-S <sup>P</sup> -P-S).
阳性对照	Human brain.

性能

形式	Liquid
存放说明	Shipped at 4°C. Upon delivery aliquot and store at -20°C. Avoid freeze / thaw cycles.
存储溶液	Preservative: 0.02% Sodium Azide Constituents: 50% Glycerol, PBS, 150mM Sodium chloride, pH 7.4
纯度	Immunogen affinity purified
克隆	多克隆
同种型	IgG

应用

Our [Abpromise guarantee](#) covers the use of **ab59337** in the following tested applications.

The application notes include recommended starting dilutions; optimal dilutions/concentrations should be determined by the end user.

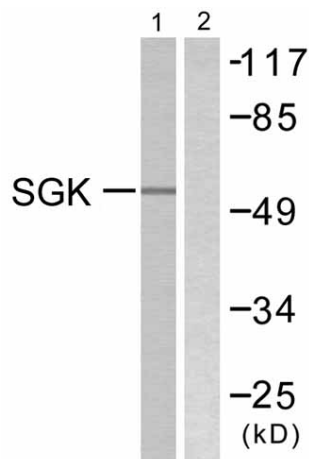
应用	Ab评论	说明
ICC/IF		Use a concentration of 1 µg/ml.
WB		1/500 - 1/1000. Detects a band of approximately 55 kDa (predicted molecular weight: 49 kDa).
ELISA		1/5000.

应用	Ab评论	说明
IHC-FoFr		Use at an assay dependent concentration. PubMed: 20459597
IHC-P		1/50 - 1/100.

## 靶标

<b>功能</b>	Protein kinase that plays an important role in cellular stress response. Activates certain potassium, sodium, and chloride channels, suggesting an involvement in the regulation of processes such as cell survival, neuronal excitability and renal sodium excretion. Sustained high levels and activity may contribute to conditions such as hypertension and diabetic nephropathy. Mediates cell survival signals, phosphorylates and negatively regulates pro-apoptotic FOXO3A. Phosphorylates NEDD4L, which leads to its inactivation and to the subsequent activation of various channels and transporters such as ENaC, KCNA3/Kv1.3 or EAAT1. Isoform 2 exhibited a greater effect on cell plasma membrane expression of ENaC and Na(+) transport than isoform 1.
<b>组织特异性</b>	Expressed in most tissues with highest levels in the pancreas, followed by placenta, kidney and lung. Isoform 2 is strongly expressed in brain and pancreas, weaker in heart, placenta, lung, liver and skeletal muscle.
<b>序列相似性</b>	Belongs to the protein kinase superfamily. AGC Ser/Thr protein kinase family. Contains 1 AGC-kinase C-terminal domain. Contains 1 protein kinase domain.
<b>结构域</b>	Isoform 2 subcellular localization at the plasma membrane is mediated by the sequences within the first 120 amino acids.
<b>翻译后修饰</b>	Regulated by phosphorylation. Phosphoinositide 3-kinase (PI3-kinase) pathway promotes phosphorylation at Ser-422 which in turn increases the phosphorylation of Thr-256 by PDPK1. Ubiquitinated by NEDD4L; which promotes proteasomal degradation. Ubiquitinated by SYVN1 at the endoplasmic reticulum; which promotes rapid proteasomal degradation and maintains a high turnover rate in resting cells. Isoform 2 shows enhanced stability. Isoform 2 resistance to proteasomal degradation is mediated by the sequences within the first 120-amino acid.
<b>细胞定位</b>	Cell membrane and Cytoplasm. Nucleus. Endoplasmic reticulum. Nuclear, upon phosphorylation.

## 图片



Western blot - Anti-SGK1 antibody (ab59337)

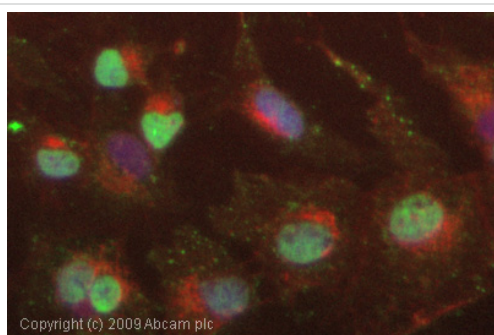
**All lanes** : Anti-SGK1 antibody (ab59337) at 1/500 dilution

**Lane 1** : 293 cells treated with heat shock

**Lane 2** : 293 cells treated with heat shock with immunizing non-phosphopeptide

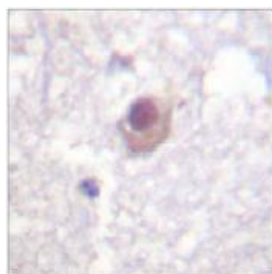
**Predicted band size** : 49 kDa

**Observed band size** : 55 kDa



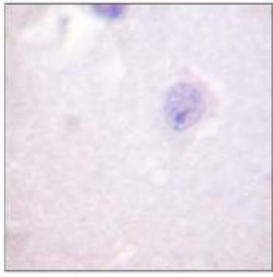
Immunocytochemistry/ Immunofluorescence - Anti-SGK1 antibody (ab59337)

ICC/IF image of ab59337 stained HepG2 cells. The cells were 4% formaldehyde fixed (10 min) and then incubated in 1%BSA / 10% normal goat serum / 0.3M glycine in 0.1% PBS-Tween for 1h to permeabilise the cells and block non-specific protein-protein interactions. The cells were then incubated with the antibody (ab59337, 1µg/ml) overnight at +4°C. The secondary antibody (green) was Alexa Fluor® 488 goat anti-rabbit IgG (H+L) used at a 1/1000 dilution for 1h. Alexa Fluor® 594 WGA was used to label plasma membranes (red) at a 1/200 dilution for 1h. DAPI was used to stain the cell nuclei (blue) at a concentration of 1.43µM.



Immunohistochemistry (Formalin/PFA-fixed paraffin-embedded sections) - Anti-SGK1 antibody (ab59337)

ab59337, at a 1/50-1/100 dilution, staining SGK1 in Human brain sections.



ab59337, at a 1/50-1/100 dilution, staining SGK1 in Human brain sections, in the presence of the immunizing peptide.

Immunohistochemistry (Formalin/PFA-fixed paraffin-embedded sections) - Anti-SGK1 antibody (ab59337)

**Please note:** All products are "FOR RESEARCH USE ONLY AND ARE NOT INTENDED FOR DIAGNOSTIC OR THERAPEUTIC USE"

### Our Abpromise to you: Quality guaranteed and expert technical support

- Replacement or refund for products not performing as stated on the datasheet
- Valid for 12 months from date of delivery
- Response to your inquiry within 24 hours
- We provide support in Chinese, English, French, German, Japanese and Spanish
- Extensive multi-media technical resources to help you
- We investigate all quality concerns to ensure our products perform to the highest standards

If the product does not perform as described on this datasheet, we will offer a refund or replacement. For full details of the Abpromise, please visit <http://www.abcam.cn/abpromise> or contact our technical team.

### Terms and conditions

- Guarantee only valid for products bought direct from Abcam or one of our authorized distributors