


Product datasheet

Anti-SEC61A antibody ab1327

1 References 1 图像

概述

<b>产品名称</b>	Anti-SEC61A抗体
<b>描述</b>	山羊多克隆抗体to SEC61A
<b>宿主</b>	Goat
<b>经测试应用</b>	<b>适用于:</b> WB, IHC-P, ICC/IF
<b>种属反应性</b>	<b>与反应:</b> Mouse, Human <b>预测可用于:</b> Cow, Dog, Pig 
<b>免疫原</b>	Synthetic peptide: C-KEQSEVGS MGALLF , corresponding to C terminal amino acids 463-476 of Human SEC61A(Peptide available as <a href="#">ab22804</a> .)  <a href="#">Run BLAST with</a> <a href="#">Run BLAST with</a>
<b>阳性对照</b>	Human cerebellum and mouse brain lysate.

性能

<b>形式</b>	Liquid
<b>存放说明</b>	Shipped at 4°C. Upon delivery aliquot and store at -20°C. Avoid repeated freeze / thaw cycles.
<b>存储溶液</b>	Preservative: 0.02% Sodium Azide Constituents: 0.5% BSA, 0.5mg/ml Tris, pH 7.3
<b>纯度</b>	Immunogen affinity purified
<b>纯化说明</b>	Purified from goat serum by ammonium sulphate precipitation followed by antigen affinity chromatography using the immunizing peptide.
<b>克隆</b>	多克隆
<b>同种型</b>	IgG

应用

Our [Abpromise guarantee](#) covers the use of **ab1327** in the following tested applications.

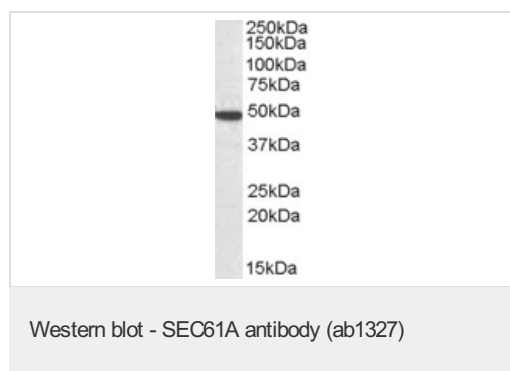
The application notes include recommended starting dilutions; optimal dilutions/concentrations should be determined by the end user.

应用	Ab 评论	说明
WB		Use a concentration of 0.3 - 1 µg/ml. Detects a band of approximately 50 kDa (predicted molecular weight: 52 kDa). Can be blocked with <a href="#">Human SEC61A peptide (ab22804)</a> .
IHC-P		Use a concentration of 3.75 µg/ml.
ICC/IF		Use at an assay dependent concentration. PubMed: 19934005

## 靶标

<b>功能</b>	Plays a crucial role in the insertion of secretory and membrane polypeptides into the ER. Required for assembly of membrane and secretory proteins. Tightly associated with membrane-bound ribosomes, either directly or through adapter proteins.
<b>序列相似性</b>	Belongs to the secY/SEC61-alpha family.
<b>细胞定位</b>	Endoplasmic reticulum membrane.

## 图片



Anti-SEC61A antibody (ab1327) at 1 µg/ml +  
Human cerebellum lysate in RIPA buffer at 35  
µg

**Predicted band size: 52 kDa**

**Please note:** All products are "FOR RESEARCH USE ONLY AND ARE NOT INTENDED FOR DIAGNOSTIC OR THERAPEUTIC USE"

## Our Abpromise to you: Quality guaranteed and expert technical support

- Replacement or refund for products not performing as stated on the datasheet
- Valid for 12 months from date of delivery
- Response to your inquiry within 24 hours
- We provide support in Chinese, English, French, German, Japanese and Spanish
- Extensive multi-media technical resources to help you
- We investigate all quality concerns to ensure our products perform to the highest standards

If the product does not perform as described on this datasheet, we will offer a refund or replacement. For full details of the Abpromise, please visit <http://www.abcam.cn/abpromise> or contact our technical team.

## Terms and conditions

---

- Guarantee only valid for products bought direct from Abcam or one of our authorized distributors