


Product datasheet

Anti-SAT1 antibody ab105220

★★★★★ 1 Abreviews 1 图像

概述

产品名称	Anti-SAT1抗体
描述	兔多克隆抗体to SAT1
经测试应用	适用于: WB
种属反应性	与反应: Human 预测可用于: Mouse, Rat, Rabbit, Cow, Pig, Macaque monkey, Gorilla, Chinese hamster 
免疫原	Synthetic peptide conjugated to KLH derived from within residues 100 to the C-terminus of Human SAT1.参阅Abcam的 专有抗源政策
阳性对照	This antibody gave a positive signal in Human Adipose tissue lysate.

性能

形式	Liquid
存放说明	Shipped at 4°C. Store at +4°C short term (1-2 weeks). Upon delivery aliquot. Store at -20°C or -80°C. Avoid freeze / thaw cycle.
存储溶液	pH: 7.40 Preservative: 0.02% Sodium azide Constituents: PBS, 1% BSA Note: Batches of this product that have a concentration < 1mg/ml may have BSA added as a stabilising agent. If you would like information about the formulation of a specific lot, please contact our scientific support team who will be happy to help.
纯度	Immunogen affinity purified
克隆	多克隆
同种型	IgG

应用

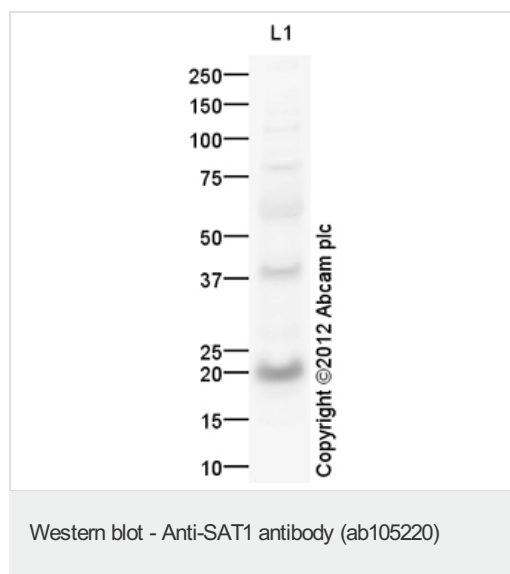
Our [Abpromise guarantee](#) covers the use of **ab105220** in the following tested applications.
The application notes include recommended starting dilutions; optimal dilutions/concentrations should be determined by the end user.

应用	Ab评论	说明
WB		Use a concentration of 1 µg/ml. Detects a band of approximately 20 kDa (predicted molecular weight: 20 kDa).

靶标

功能	Enzyme which catalyzes the acetylation of polyamines. Substrate specificity: norspermidine = spermidine >> spermine > N(1)-acetylspermine > putrescine. This highly regulated enzyme allows a fine attenuation of the intracellular concentration of polyamines. Also involved in the regulation of polyamine transport out of cells. Acts on 1,3-diaminopropane, 1,5-diaminopentane, putrescine, spermidine (forming N(1)- and N(8)-acetylspermidine), spermine, N(1)-acetylspermidine and N(8)-acetylspermidine.
通路	Amine and polyamine degradation; putrescine degradation; N-acetylputrescine from putrescine: step 1/1.
疾病相关	Keratosis follicularis spinulosa decalvans X-linked
序列相似性	Belongs to the acetyltransferase family. Contains 1 N-acetyltransferase domain.
细胞定位	Cytoplasm.

图片



Anti-SAT1 antibody (ab105220) at 1 µg/ml +
Human adipose normal tissue lysate - total
protein (ab28980) at 25 µg

Secondary

Goat Anti-Rabbit IgG H&L (HRP) preadsorbed
(ab97080) at 1/5000 dilution
Developed using the ECL technique

Performed under reducing conditions.

Predicted band size : 20 kDa

Observed band size : 20 kDa

Additional bands at : 110 kDa,39 kDa,60
kDa,78 kDa. We are unsure as to the identity
of these extra bands.

Exposure time : 12 minutes

Please note: All products are "FOR RESEARCH USE ONLY AND ARE NOT INTENDED FOR DIAGNOSTIC OR THERAPEUTIC USE"

Our Abpromise to you: Quality guaranteed and expert technical support

- Replacement or refund for products not performing as stated on the datasheet
- Valid for 12 months from date of delivery
- Response to your inquiry within 24 hours

- We provide support in Chinese, English, French, German, Japanese and Spanish
- Extensive multi-media technical resources to help you
- We investigate all quality concerns to ensure our products perform to the highest standards

If the product does not perform as described on this datasheet, we will offer a refund or replacement. For full details of the Abpromise, please visit <http://www.abcam.cn/abpromise> or contact our technical team.

Terms and conditions

- Guarantee only valid for products bought direct from Abcam or one of our authorized distributors