

Product datasheet

Anti-S100 alpha antibody [EPR5251] ab109384

重组 RabMAb

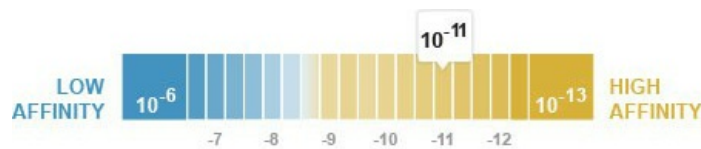
3 图像

概述

| | |
|--------------|--|
| 产品名称 | Anti-S100 alpha抗体[EPR5251] |
| 描述 | 兔单克隆抗体[EPR5251] to S100 alpha |
| 宿主 | Rabbit |
| 经测试应用 | 适用于: WB, IP, Flow Cyt, ICC/IF 不适用于: IHC-P |
| 种属反应性 | 与反应: Mouse, Rat, Human |
| 免疫原 | A synthetic peptide corresponding to residues in Human S100 alpha |
| 阳性对照 | WB: kidney, C2C12, mouse kidney, Human brain, HT-1080 and mouse heart lysate IF: HeLa cells |
| 常规说明 | Our RabMAb [®] technology is a patented hybridoma-based technology for making rabbit monoclonal antibodies. For details on our patents, please refer to RabMAb[®] patents This product is a recombinant rabbit monoclonal antibody. |

性能

| | |
|-----------------------------|--|
| 形式 | Liquid |
| 存放说明 | Shipped at 4°C. Store at -20°C. Stable for 12 months at -20°C. |
| 解离常数 (K_D) | K _D = 5.00 x 10 ⁻¹¹ M |



[Learn more about K_D](#)

| | |
|-------------|--|
| 存储溶液 | PBS 49%, Sodium azide 0.01%, Glycerol 50%, BSA 0.05% |
| 纯度 | Tissue culture supernatant |
| 克隆 | 单克隆 |
| 克隆编号 | EPR5251 |
| 同种型 | IgG |

应用

Our [Abpromise guarantee](#) covers the use of **ab109384** in the following tested applications.

The application notes include recommended starting dilutions; optimal dilutions/concentrations should be determined by the end user.

| 应用 | Ab评论 | 说明 |
|----------|------|--|
| WB | | 1/1000 - 1/10000. Predicted molecular weight: 11 kDa. |
| IP | | 1/10 - 1/100. |
| Flow Cyt | | 1/10 - 1/100. ab172730 - Rabbit monoclonal IgG, is suitable for use as an isotype control with this antibody. |
| ICC/IF | | 1/100 - 1/250. |

应用说明 Is unsuitable for IHC-P.

靶标

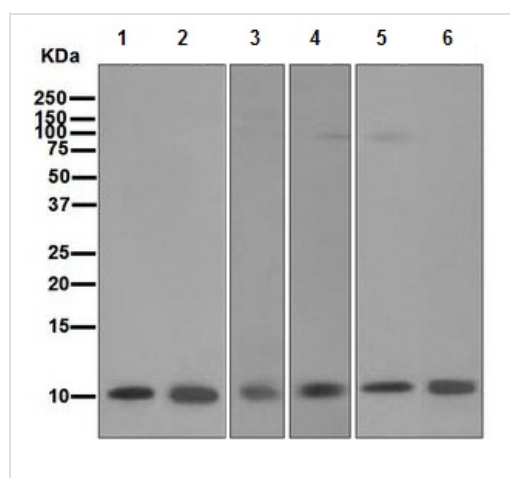
功能 Weakly binds calcium but binds zinc very tightly-distinct binding sites with different affinities exist for both ions on each monomer. Physiological concentrations of potassium ion antagonize the binding of both divalent cations, especially affecting high-affinity calcium-binding sites.

组织特异性 Highly prevalent in heart. Also found in lesser quantities in skeletal muscle and brain.

序列相似性 Belongs to the S-100 family.
Contains 2 EF-hand domains.

细胞定位 Cytoplasm.

图片



All lanes : Anti-S100 alpha antibody
[EPR5251] (ab109384) at 1/1000 dilution

Lane 1 : Rat kidney lysate

Lane 2 : C2C12 lysate

Lane 3 : Mouse kidney lysate

Lane 4 : Human brain lysate

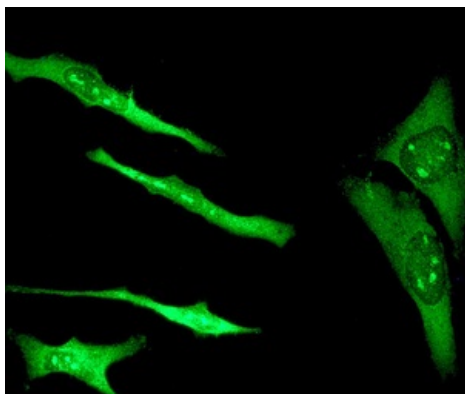
Lane 5 : HT-1080 lysate

Lane 6 : Mouse heart lysate

Lysates/proteins at 10 µg per lane.

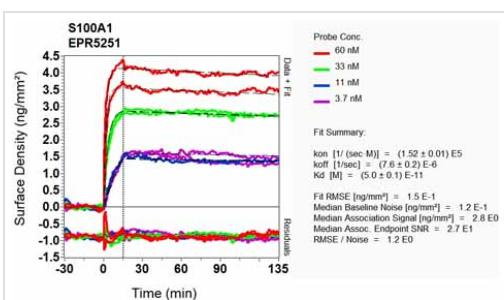
Western blot - Anti-S100 alpha antibody [EPR5251]
(ab109384)

Predicted band size: 11 kDa



ab109384, at a 1/100 dilution staining S100 alpha in HeLa cells

Immunocytochemistry/ Immunofluorescence - Anti-S100 alpha antibody [EPR5251] (ab109384)



Equilibrium dissociation constant (K_D)

Learn more about K_D

[Click here to learn more about \$K_D\$](#)

Other - Anti-S100 alpha antibody [EPR5251] (ab109384)

Please note: All products are "FOR RESEARCH USE ONLY AND ARE NOT INTENDED FOR DIAGNOSTIC OR THERAPEUTIC USE"

Our Abpromise to you: Quality guaranteed and expert technical support

- Replacement or refund for products not performing as stated on the datasheet
- Valid for 12 months from date of delivery
- Response to your inquiry within 24 hours
- We provide support in Chinese, English, French, German, Japanese and Spanish
- Extensive multi-media technical resources to help you
- We investigate all quality concerns to ensure our products perform to the highest standards

If the product does not perform as described on this datasheet, we will offer a refund or replacement. For full details of the Abpromise, please visit <http://www.abcam.cn/abpromise> or contact our technical team.

Terms and conditions

- Guarantee only valid for products bought direct from Abcam or one of our authorized distributors