

Product datasheet

Anti-S100 Calcium Binding Protein A13 antibody [EPR4510] ab109252

重组 RabMab

3 图像

概述

产品名称	Anti-S100 Calcium Binding Protein A13抗体[EPR4510]
描述	兔单克隆抗体[EPR4510] to S100 Calcium Binding Protein A13
经测试应用	适用于: WB, IP, IHC-P, ICC, Flow Cyt
种属反应性	与反应: Human
免疫原	A synthetic peptide corresponding to residues in Human S100 Calcium Binding Protein A13.
阳性对照	Human thyroid and testis, HUVEC and ECV304 cell lysates; Human brain and muscle tissues.
常规说明	<p>This product is a recombinant rabbit monoclonal antibody.</p> <p>Mouse, Rat: We have preliminary internal testing data to indicate this antibody may not react with these species. Please contact us for more information.</p> <p>Our RabMab[®] technology is a patented hybridoma-based technology for making rabbit monoclonal antibodies. For details on our patents, please refer to RabMab[®] patents</p>

性能

形式	Liquid
存放说明	Shipped at 4°C. Store at -20°C. Stable for 12 months at -20°C.
存储溶液	PBS 49%,Sodium azide 0.01%,Glycerol 50%,BSA 0.05%
纯度	Tissue culture supernatant
克隆	单克隆
克隆编号	EPR4510
同种型	IgG

应用

Our [Abpromise guarantee](#) covers the use of **ab109252** in the following tested applications.

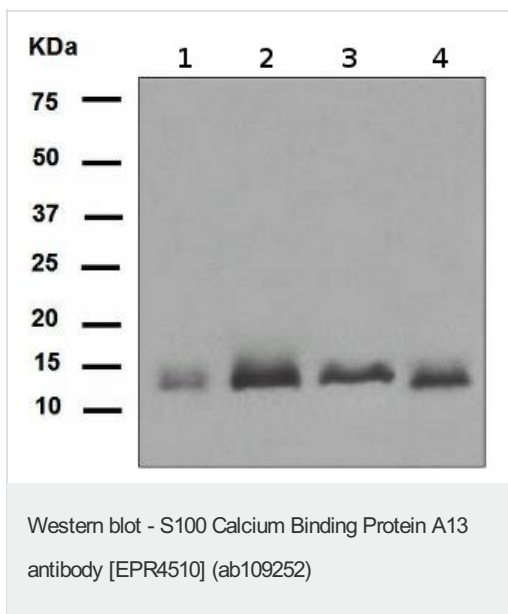
The application notes include recommended starting dilutions; optimal dilutions/concentrations should be determined by the end user.

应用	Ab评论	说明
WB		1/1000 - 1/10000. Predicted molecular weight: 11 kDa.
IP		1/10 - 1/100.
IHC-P		1/250 - 1/500. Perform heat mediated antigen retrieval before commencing with IHC staining protocol. Use of a HRP/AP polymerized antibody recommended.
ICC		1/100 - 1/250.
Flow Cyt		1/10 - 1/100. ab172730 - Rabbit monoclonal IgG, is suitable for use as an isotype control with this antibody.

靶标

功能	Plays a role in the export of proteins that lack a signal peptide and are secreted by an alternative pathway. Binds two calcium ions per subunit. Binds one copper ion. Binding of one copper ion does not interfere with calcium binding. Required for the copper-dependent stress-induced export of IL1A and FGF1. The calcium-free protein binds to lipid vesicles containing phosphatidylserine, but not to vesicles containing phosphatidylcholine.
组织特异性	Expressed in heart and skeletal muscle.
序列相似性	Belongs to the S-100 family. Contains 2 EF-hand domains.
细胞定位	Cytoplasm. Secreted. Secretion is mediated by exposure to stress and requires copper ions.

Anti-S100 Calcium Binding Protein A13 antibody [EPR4510] 图像



All lanes : Anti-S100 Calcium Binding Protein A13 antibody [EPR4510] (ab109252) at 1/1000 dilution

Lane 1 : Human thyroid tissue lysate

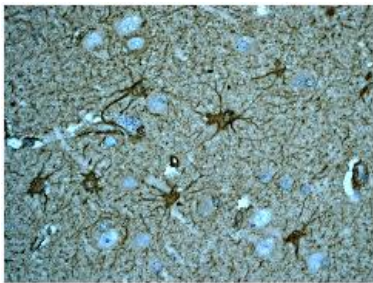
Lane 2 : Human testis tissue lysate

Lane 3 : HUVEC lysate

Lane 4 : ECV304 lysate

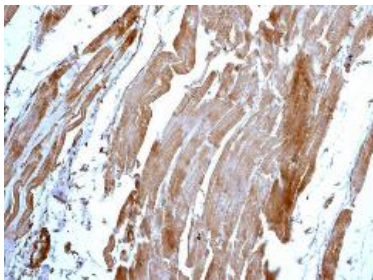
Lysates/proteins at 10 µg per lane.

Predicted band size : 11 kDa



ab109252, at a 1/250 dilution, staining S100 Calcium Binding Protein A13 in Human brain, by Immunohistochemistry, Paraffin-embedded tissue.

Immunohistochemistry (Formalin/PFA-fixed paraffin-embedded sections) - S100 Calcium Binding Protein A13 antibody [EPR4510] (ab109252)



ab109252, at a 1/250 dilution, staining S100 Calcium Binding Protein A13 in Human muscle, by Immunohistochemistry, Paraffin-embedded tissue.

Immunohistochemistry (Formalin/PFA-fixed paraffin-embedded sections) - S100 Calcium Binding Protein A13 antibody [EPR4510] (ab109252)

Please note: All products are "FOR RESEARCH USE ONLY AND ARE NOT INTENDED FOR DIAGNOSTIC OR THERAPEUTIC USE"

Our Abpromise to you: Quality guaranteed and expert technical support

- Replacement or refund for products not performing as stated on the datasheet
- Valid for 12 months from date of delivery
- Response to your inquiry within 24 hours
- We provide support in Chinese, English, French, German, Japanese and Spanish
- Extensive multi-media technical resources to help you
- We investigate all quality concerns to ensure our products perform to the highest standards

If the product does not perform as described on this datasheet, we will offer a refund or replacement. For full details of the Abpromise, please visit <http://www.abcam.cn/abpromise> or contact our technical team.

Terms and conditions

- Guarantee only valid for products bought direct from Abcam or one of our authorized distributors