

Product datasheet

Anti-Rex1 antibody ab119325

1 图像

概述

产品名称	Anti-Rex1 抗体
描述	兔多克隆抗体 to Rex1
经测试应用	适用于: WB
种属反应性	与反应: Human
免疫原	Synthetic peptide conjugated to KLH, surrounding amino acids 10-14 of Human Rex1.
阳性对照	Jurkat, HL60 and Raji cell extracts.

性能

形式	Liquid
存放说明	Shipped at 4°C. Store at -20°C. Stable for 12 months at -20°C.
存储溶液	pH: 7.40 Preservative: 0.02% Sodium azide Constituents: 50% Glycerol, 0.88% Sodium chloride, 49% PBS Note: (without Mg <sup>2+</sup> and Ca <sup>2+</sup> )
纯度	Immunogen affinity purified
克隆	多克隆
同种型	IgG

应用

Our [Abpromise guarantee](#) covers the use of **ab119325** in the following tested applications.

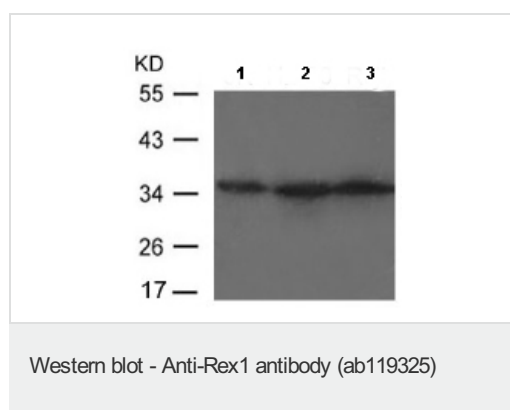
The application notes include recommended starting dilutions; optimal dilutions/concentrations should be determined by the end user.

应用	Ab评论	说明
WB		1/500 - 1/1000. Predicted molecular weight: 35 kDa.

靶标

<b>功能</b>	Involved in self-renewal property of ES cells (By similarity). May be involved in transcriptional regulation.
<b>组织特异性</b>	Expressed in kidney, epidermal keratinocytes, prostate epithelial cells, bronchial and small airway lung epithelial cells (at protein level). Expressed in malignant kidney and several carcinoma cell lines (at protein level). Expressed in embryonic stem cells, kidney, epidermal keratinocytes, prostate epithelial cells, bronchial and small airway lung epithelial cells. Expressed in embryonal carcinomas, seminomas, malignant kidney and several carcinoma cell lines.
<b>序列相似性</b>	Belongs to the krueppel C2H2-type zinc-finger protein family. Contains 4 C2H2-type zinc fingers.
<b>细胞定位</b>	Nucleus.

## 图片



**All lanes :** Anti-Rex1 antibody (ab119325) at 1/500 dilution

**Lane 1 :** Jurkat cell extract

**Lane 2 :** HL60 cell extract

**Lane 3 :** Raji cell extract

**Predicted band size :** 35 kDa

**Please note:** All products are "FOR RESEARCH USE ONLY AND ARE NOT INTENDED FOR DIAGNOSTIC OR THERAPEUTIC USE"

## Our Abpromise to you: Quality guaranteed and expert technical support

- Replacement or refund for products not performing as stated on the datasheet
- Valid for 12 months from date of delivery
- Response to your inquiry within 24 hours
- We provide support in Chinese, English, French, German, Japanese and Spanish
- Extensive multi-media technical resources to help you
- We investigate all quality concerns to ensure our products perform to the highest standards

If the product does not perform as described on this datasheet, we will offer a refund or replacement. For full details of the Abpromise, please visit <http://www.abcam.cn/abpromise> or contact our technical team.

## Terms and conditions

- Guarantee only valid for products bought direct from Abcam or one of our authorized distributors