

## Product datasheet

# Anti-Reptin/TIP49B/RUVB2 antibody ab36569

★★★★☆ 13 Abreviews 12 References 5 图像

### 概述

产品名称	Anti-Reptin/TIP49B/RUVB2抗体
描述	兔多克隆抗体to Reptin/TIP49B/RUVB2
宿主	Rabbit
经测试应用	适用于: IHC-P, WB, ICC/IF, IP
种属反应性	与反应: Mouse, Rat, Human, Zebrafish 预测可用于: Cow, Xenopus laevis ▲
免疫原	Synthetic peptide conjugated to KLH derived from within residues 300 - 400 of Human Reptin/TIP49B/RUVB2. 参阅Abcam的专有抗源政策(Peptide available as <a href="#">ab36568</a> .)
阳性对照	The antibody gave positive results in the following whole cell lysates: HeLa (Human epithelial carcinoma cell line), Jurkat (Human T cell lymphoblast-like cell line), A431 (Human epithelial carcinoma cell line), HEK 293 (Human embryonic kidney cell line), HepG2 (Human hepatocellular liver carcinoma cell line), MCF-7 (Human breast adenocarcinoma cell line) and U2OS (Human osteosarcoma cell line).

### 性能

形式	Liquid
存放说明	Shipped at 4°C. Store at +4°C short term (1-2 weeks). Upon delivery aliquot. Store at -20°C or -80°C. Avoid freeze / thaw cycle.
存储溶液	Preservative: 0.02% Sodium Azide Constituents: 1% BSA, PBS, pH 7.4
纯度	Immunogen affinity purified
克隆	多克隆
同种型	IgG

### 应用

Our [Abpromise guarantee](#) covers the use of **ab36569** in the following tested applications.

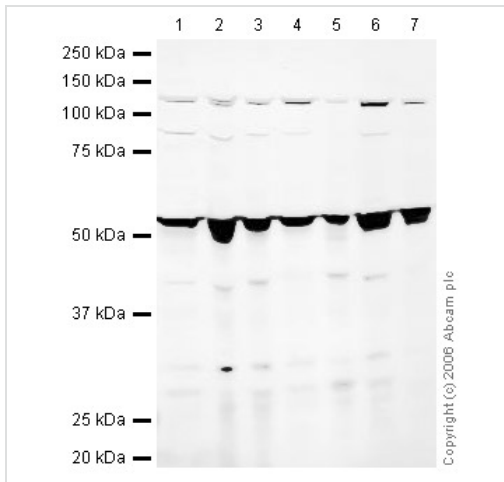
The application notes include recommended starting dilutions; optimal dilutions/concentrations should be determined by the end user.

应用	Ab评论	说明
IHC-P		1/400. Perform heat mediated antigen retrieval before commencing with IHC staining protocol.
WB	★★★★☆	Use a concentration of 1 µg/ml. Detects a band of approximately 52 kDa (predicted molecular weight: 50 kDa).
ICC/IF	★★★★☆	Use a concentration of 1 µg/ml.
IP	★★★★★	Use at an assay dependent concentration.

## 靶标

<b>功能</b>	Possesses single-stranded DNA-stimulated ATPase and ATP-dependent DNA helicase (5' to 3') activity. Component of the NuA4 histone acetyltransferase complex which is involved in transcriptional activation of select genes principally by acetylation of nucleosomal histones H4 and H2A. This modification may both alter nucleosome - DNA interactions and promote interaction of the modified histones with other proteins which positively regulate transcription. This complex may be required for the activation of transcriptional programs associated with oncogene and proto-oncogene mediated growth induction, tumor suppressor mediated growth arrest and replicative senescence, apoptosis, and DNA repair. The NuA4 complex ATPase and helicase activities seem to be, at least in part, contributed by the association of RUVBL1 and RUVBL2 with EP400. NuA4 may also play a direct role in DNA repair when recruited to sites of DNA damage. RUVBL2 plays an essential role in oncogenic transformation by MYC and also modulates transcriptional activation by the LEF1/TCF1-CTNNB1 complex. May also inhibit the transcriptional activity of ATF2.
<b>组织特异性</b>	Ubiquitously expressed. Highly expressed in testis and thymus.
<b>序列相似性</b>	Belongs to the ruvB family.
<b>结构域</b>	The C-terminal domain is required for association with ATF2.
<b>翻译后修饰</b>	Phosphorylated upon DNA damage, probably by ATM or ATR.
<b>细胞定位</b>	Nucleus matrix. Nucleus > nucleoplasm. Cytoplasm. Membrane. Mainly localized in the nucleus, associated with nuclear matrix or in the nuclear cytosol. Although it is also present in the cytoplasm and associated with the cell membranes.

## 图片



Western blot - Anti-Reptin/TIP49B/RUVB2 antibody (ab36569)

**All lanes :** Anti-Reptin/TIP49B/RUVB2 antibody (ab36569) at 1 µg/ml

**Lane 1 :** HeLa (Human epithelial carcinoma cell line) Whole Cell Lysate

**Lane 2 :** Jurkat whole cell lysate (ab7899)

**Lane 3 :** A431 whole cell lysate (ab7909)

**Lane 4 :** HEK293 whole cell lysate (ab7902)

**Lane 5 :** HepG2 whole cell lysate (ab7900)

**Lane 6 :** MCF-7 (Human breast adenocarcinoma cell line) Whole Cell Lysate

**Lane 8 :** U2OS Whole Cell Lysate

Lysates/proteins at 10 µg per lane.

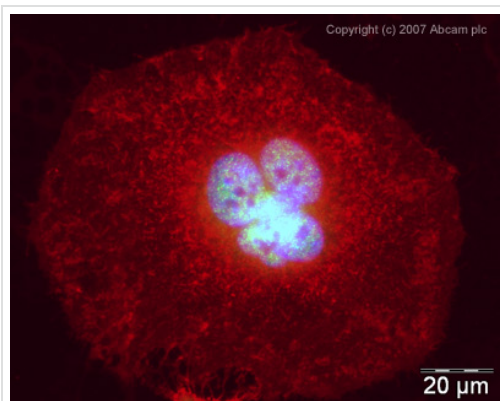
### Secondary

**All lanes :** IRDye 680 Conjugated Goat Anti-Rabbit IgG (H+L) at 1/15000 dilution

Performed under reducing conditions.

**Predicted band size:** 50 kDa

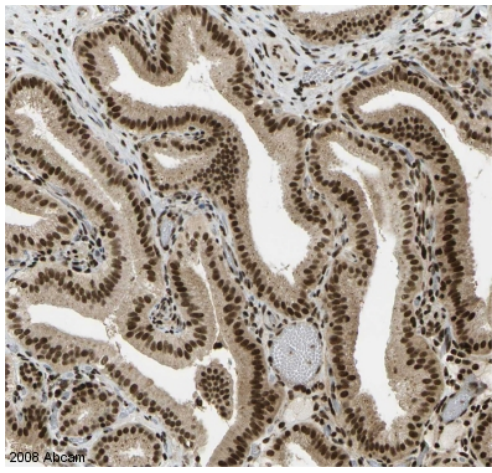
**Observed band size:** 52 kDa



Immunocytochemistry/ Immunofluorescence - Anti-Reptin/TIP49B/RUVB2 antibody (ab36569)

ICC/IF image of ab36569 stained human HeLa cells.

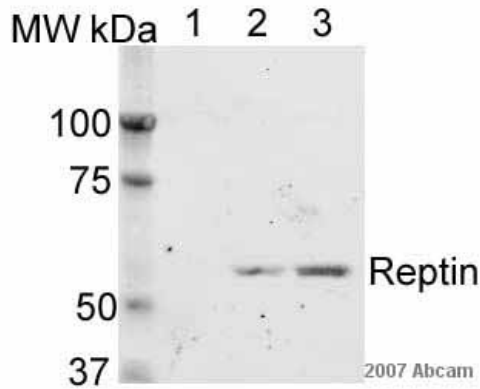
The cells were PFA fixed (10 min) and incubated with the antibody (ab36569, 1µg/ml) for 1h at room temperature. The secondary antibody (green) was Alexa Fluor® 488 goat anti-rabbit IgG (H+L) used at a 1/1000 dilution for 1h. Image-iT™ FX Signal Enhancer was used to quench autofluorescence. 5% BSA (in TBS-T) was used for all other blocking steps. DAPI was used to stain the cell nuclei (blue). Alexa Fluor® 594 WGA was used to label plasma membranes (red).



Immunohistochemistry (Formalin/PFA-fixed paraffin-embedded sections) - Anti-Reptin/TIP49B/RUVB2 antibody (ab36569)

Image courtesy of [Human Protein Atlas](#) .  
 ab36569 staining Reptin/TIP49B/RUVB2 in human gall bladder, showing a predominantly nuclear staining pattern in glandular cells. Paraffin embedded human gall bladder tissue was incubated with ab36569 (1/400 dilution) for 30 mins at room temperature. Antigen retrieval was performed by heat induction in citrate buffer pH 6.

ab36569 was tested in a tissue microarray (TMA) containing a wide range of normal and cancer tissues. Further results for this antibody can be found at [www.proteinatlas.org](http://www.proteinatlas.org)



Western blot - Anti-Reptin/TIP49B/RUVB2 antibody (ab36569)

This image is courtesy of an anonymous Abreview

**All lanes :** Anti-Reptin/TIP49B/RUVB2 antibody (ab36569) at 1 µg/ml

**Lane 1 :** Hela cells treated with reptin-specific siRNA#1, whole cell lysate

**Lane 2 :** Hela cells treated with reptin-specific siRNA#2, whole cell lysate

**Lane 3 :** Hela cells treated with non-specific siRNA, whole cell lysate

Lysates/proteins at 20 µg per lane.

#### Secondary

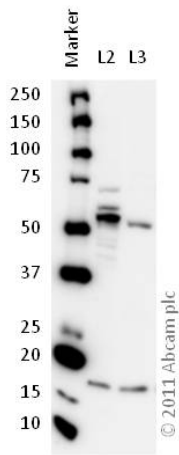
**All lanes :** Alexa Fluor® 680 conjugated goat anti-rabbit at 1/7000 dilution

Performed under reducing conditions.

**Predicted band size:** 50 kDa

**Observed band size:** 55 kDa

Detection method was Odyssey, with 10 second exposure.



Western blot - Anti-Reptin/TIP49B/RUVB2 antibody (ab36569)

**All lanes :** Anti-Reptin/TIP49B/RUVB2 antibody (ab36569) at 1 µg/ml

**Lane 1 :** Marker

**Lane 2 :** Zebrafish brain homogenate at 20 µg

**Lane 3 :** Zebrafish heart homogenate at 20 µg

**Secondary**

**All lanes :** Goat polyclonal to Rabbit IgG – H&L – Pre-Adsorbed (HRP) at 1/6000 dilution

Developed using the ECL technique.

Performed under reducing conditions.

**Predicted band size:** 50 kDa

**Observed band size:** 51 kDa

**Exposure time:** 5 minutes

**Please note:** All products are "FOR RESEARCH USE ONLY AND ARE NOT INTENDED FOR DIAGNOSTIC OR THERAPEUTIC USE"

**Our Abpromise to you: Quality guaranteed and expert technical support**

- Replacement or refund for products not performing as stated on the datasheet
- Valid for 12 months from date of delivery
- Response to your inquiry within 24 hours
- We provide support in Chinese, English, French, German, Japanese and Spanish
- Extensive multi-media technical resources to help you
- We investigate all quality concerns to ensure our products perform to the highest standards

If the product does not perform as described on this datasheet, we will offer a refund or replacement. For full details of the Abpromise, please visit <http://www.abcam.cn/abpromise> or contact our technical team.

**Terms and conditions**

- Guarantee only valid for products bought direct from Abcam or one of our authorized distributors