

Product datasheet

Recombinant human SHP1 protein ab51289

1 图像

概述

产品名称	Recombinant人SHP1 protein
蛋白长度	Protein fragment

描述

性质	Recombinant
来源	Escherichia coli
氨基酸序列	
种属	Human
序列	M-GFWEEFES LQKQEVKNLH QRLEGQRPEN KGKNRYKNIL PFDHSRVILQ GRDSNIPGSD YINANYIKNQ LLGPDENAKT YIASQGCLEA TVNDFWQMAW QENSRVIVMT TREVEKGRNK CVPYWPEVGM QRAYGPYSVT NCGEHDTEY KLRTLQVSPL DNGDLIREIW HYQYLSWPDH GVPSEPGGVL SFLDQINQRQ ESLPHAGPII VHCSAGIGRT GTIIVIDMLM ENISTKGLDC DIDIQKTIQM VRAQRSGMVQ TEAQYKFIYV AIAQFIETTK KKLEVLQSQK GQESEYGNIT Y

技术指标

Our [Abpromise guarantee](#) covers the use of **ab51289** in the following tested applications.

The application notes include recommended starting dilutions; optimal dilutions/concentrations should be determined by the end user.

生物活性	Specific activity: > 5,000 units/mg of SHP-1. [Unit Definition : One unit will hydrolyze 1 nanomole of p-nitrophenylphosphatate per minute at pH 7.5 at 37°C using 10mM of substrate.]
应用	Phosphatase Activity SDS-PAGE
纯度	> 95 % SDS-PAGE. ab51289 was purified by FPLC gel-filtration chromatography, after refolding of the isolated inclusion bodies in a redox buffer.
形式	Liquid
补充说明	

The catalytic domain of SHP-1 was overexpressed as insoluble protein aggregates (inclusion bodies).

## 制备和贮存

### 稳定性和存储

Shipped at 4°C. Upon delivery aliquot and store at -20°C. Avoid freeze / thaw cycles.

Preservative: None

Constituents: 20% Glycerol, 25mM Tris HCl, 2mM Beta mercaptoethanol, 1mM EDTA, 1mM DTT, pH 7.5

This product is an active protein and may elicit a biological response in vivo, handle with caution.

## 常规信息

### 功能

Plays a key role in hematopoiesis. This PTPase activity may directly link growth factor receptors and other signaling proteins through protein-tyrosine phosphorylation. The SH2 regions may interact with other cellular components to modulate its own phosphatase activity against interacting substrates. Together with MTUS1, induces UBE2V2 expression upon angiotensin II stimulation.

### 组织特异性

Isoform 1 is expressed in hematopoietic cells. Isoform 2 is expressed in non-hematopoietic cells.

### 序列相似性

Belongs to the protein-tyrosine phosphatase family. Non-receptor class 2 subfamily.

Contains 2 SH2 domains.

Contains 1 tyrosine-protein phosphatase domain.

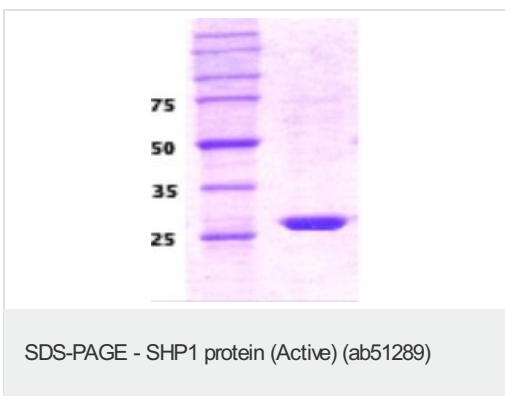
### 翻译后修饰

Phosphorylated on serine and tyrosine residues.

### 细胞定位

Cytoplasm. Nucleus. In neurons, translocates into the nucleus after treatment with angiotensin II.

## Recombinant human SHP1 protein 图像



**Please note:** All products are "FOR RESEARCH USE ONLY AND ARE NOT INTENDED FOR DIAGNOSTIC OR THERAPEUTIC USE"

## Our Promise to you: Quality guaranteed and expert technical support

- Replacement or refund for products not performing as stated on the datasheet
- Valid for 12 months from date of delivery
- Response to your inquiry within 24 hours
- We provide support in Chinese, English, French, German, Japanese and Spanish

- Extensive multi-media technical resources to help you
- We investigate all quality concerns to ensure our products perform to the highest standards

If the product does not perform as described on this datasheet, we will offer a refund or replacement. For full details of the Abpromise, please visit <http://www.abcam.cn/abpromise> or contact our technical team.

### **Terms and conditions**

---

- Guarantee only valid for products bought direct from Abcam or one of our authorized distributors