

Product datasheet

Recombinant human Pin1 protein ab51230

1 图像

概述

产品名称	Recombinant人Pin1 protein
蛋白长度	Full length protein

描述

性质	Recombinant
来源	Escherichia coli

氨基酸序列

种属	Human
序列	MADEEKLPPGWEKMRSSGRVYYFNHITNASQWERPSGNSSSGGKNGQG EPARVRCSHLLVKHSQRRPSSWRQEKITRTKEEALELINGYIQIKSGE EDFESLASQFSDCSSAKARGDLGAFSRGQMOKPFEDASFALRTGEMSGPV FTDSGIHIILRTE

技术指标

Our [Abpromise guarantee](#) covers the use of **ab51230** in the following tested applications.

The application notes include recommended starting dilutions; optimal dilutions/concentrations should be determined by the end user.

生物活性	Specific activity is > 330 nmoles/min/mg, and is defined as the amount of enzyme that cleaves 1 μmole of suc-AAFP-pNA per minute at 25°C in Tris-Hcl pH8.0 using chymotrypsin.
------	--

Activity Assay

1. Prepare 180ul assay buffer into a suitable container: 133mM Tris-HCl, pH8.0, 5.5nM chymotrypsin, and 0.5ug of Pin1 recombinant protein.
For blanks, load 133mM Tris-HCl, pH8.0 and 5.5nM chymotrypsin. (Enzyme dilution buffer: 133mM Tris-HCl, pH8.0)
2. Add 20ul of 5mM suc-AAFP-pNA to each well.
(Substrate has to be dissolved in buffer of 460mM Lithium chloride in 3mM 2,2,2-Trifluoroethanol)
3. Incubated at room temperature for 10minutes.
4. Record the increase in A405 nm for 30 minutes at 37°C.

Note: Specific activity is lot specific and is always > 330 nmoles/min/mg, and is defined as the amount of enzyme that cleaves 1 μmole of suc-AAFP-pNA per minute at 25°C in Tris-Hcl pH8.0 using chymotrypsin. Please inquire about lot specific activity

应用	Functional Studies
----	--------------------

	SDS-PAGE
内毒素水平	< 1.000 Eu/μg
质谱法	MALDI-TOF
纯度	> 95 % SDS-PAGE.
形式	Liquid

制备和贮存

稳定性和存储

Shipped at 4°C. Store at +4°C short term (1-2 weeks). Upon delivery aliquot. Store at -20°C or -80°C. Avoid freeze / thaw cycle.

Preservative: None

Constituents: 20% Glycerol, 0.1M Sodium chloride, 5mM DTT, 20mM Tris HCl, pH 7.5

This product is an active protein and may elicit a biological response in vivo, handle with caution.

常规信息

功能

Essential PPlase that regulates mitosis presumably by interacting with NIMA and attenuating its mitosis-promoting activity. Displays a preference for an acidic residue N-terminal to the isomerized proline bond. Catalyzing pSer/Thr-Pro cis/trans isomerizations.

序列相似性

Contains 1 PpiC domain.

Contains 1 WW domain.

结构域

The WW domain is required for the interaction with STIL and KIF20B.

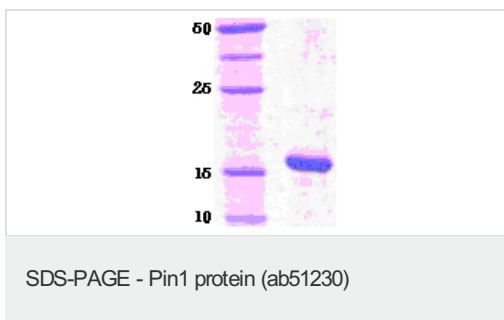
翻译后修饰

Phosphorylated upon DNA damage, probably by ATM or ATR.

细胞定位

Nucleus.

图片



ab51230 run on a 14% SDS-PAGE gel with molecular weight markers.

Please note: All products are "FOR RESEARCH USE ONLY AND ARE NOT INTENDED FOR DIAGNOSTIC OR THERAPEUTIC USE"

Our Abpromise to you: Quality guaranteed and expert technical support

- Replacement or refund for products not performing as stated on the datasheet
- Valid for 12 months from date of delivery

- Response to your inquiry within 24 hours
- We provide support in Chinese, English, French, German, Japanese and Spanish
- Extensive multi-media technical resources to help you
- We investigate all quality concerns to ensure our products perform to the highest standards

If the product does not perform as described on this datasheet, we will offer a refund or replacement. For full details of the Abpromise, please visit <http://www.abcam.cn/abpromise> or contact our technical team.

Terms and conditions

- Guarantee only valid for products bought direct from Abcam or one of our authorized distributors