

Product datasheet

Recombinant human PKN beta protein ab125615

2 图像

概述

产品名称	重组人PKN beta蛋白
蛋白长度	Full length protein

描述

性质	Recombinant
来源	Baculovirus infected Sf9 cells

氨基酸序列

Accession	Q6P5Z2
种属	Human
分子量	130 kDa including tags
氨基酸	1 to 889
标签	GST tag N-Terminus

技术指标

Our [Abpromise guarantee](#) covers the use of **ab125615** in the following tested applications.

The application notes include recommended starting dilutions; optimal dilutions/concentrations should be determined by the end user.

生物活性	The specific activity of ab125615 was determined to be 3 nmol/mg/min.
应用	Western blot Functional Studies SDS-PAGE
形式	Liquid
补充说明	ab204879 (RPS6 peptide) can be utilized as a substrate for assessing kinase activity

制备和贮存

稳定性和存储	Shipped on dry ice. Upon delivery aliquot and store at -80°C. Avoid freeze / thaw cycles. pH: 7.50 Constituents: 0.31% Glutathione, 0.002% PMSF, 0.004% DTT, 0.79% Tris HCl, 0.003% EDTA,
--------	---

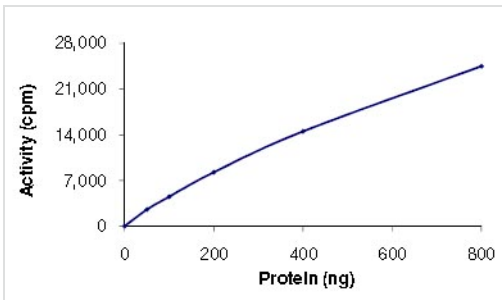
25% Glycerol, 0.88% Sodium chloride

This product is an active protein and may elicit a biological response in vivo, handle with caution.

常规信息

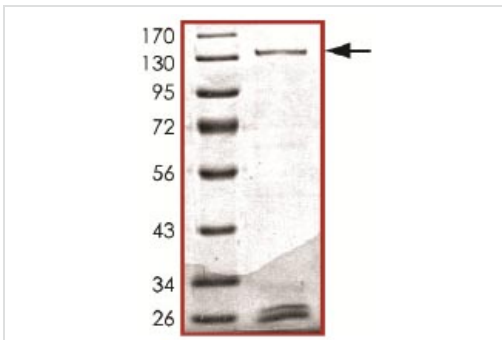
功能	Contributes to invasiveness in malignant prostate cancer.
组织特异性	Expressed in prostate tumors and various cancer cell lines. Not expressed in adult tissues.
序列相似性	Belongs to the protein kinase superfamily. AGC Ser/Thr protein kinase family. PKC subfamily. Contains 1 AGC-kinase C-terminal domain. Contains 1 protein kinase domain. Contains 3 REM (Hr1) repeats.
结构域	The C1 domain does not bind the diacylglycerol (DAG).
翻译后修饰	Autophosphorylated.
细胞定位	Nucleus. Cytoplasm > perinuclear region. Nuclear and perinuclear Golgi region.

图片



Sample Kinase Assay showing the specific activity of ab125615 as 3 nmol/mg/min.

Functional Studies - PKN beta protein (Active)
(ab125615)



SDS-PAGE analysis of ab125615.

SDS-PAGE - PKN beta protein (Active) (ab125615)

Please note: All products are "FOR RESEARCH USE ONLY AND ARE NOT INTENDED FOR DIAGNOSTIC OR THERAPEUTIC USE"

Our Abpromise to you: Quality guaranteed and expert technical support

- Replacement or refund for products not performing as stated on the datasheet
- Valid for 12 months from date of delivery
- Response to your inquiry within 24 hours

- We provide support in Chinese, English, French, German, Japanese and Spanish
- Extensive multi-media technical resources to help you
- We investigate all quality concerns to ensure our products perform to the highest standards

If the product does not perform as described on this datasheet, we will offer a refund or replacement. For full details of the Abpromise, please visit <http://www.abcam.cn/abpromise> or contact our technical team.

Terms and conditions

- Guarantee only valid for products bought direct from Abcam or one of our authorized distributors