

Product datasheet

Recombinant human PKC alpha protein ab55672

2 图像

概述

产品名称	Recombinant人PKC alpha protein
蛋白长度	Full length protein

描述

性质	Recombinant
来源	Baculovirus infected Sf9 cells
氨基酸序列	
种属	Human

技术指标

Our [Abpromise guarantee](#) covers the use of **ab55672** in the following tested applications.

The application notes include recommended starting dilutions; optimal dilutions/concentrations should be determined by the end user.

生物活性	Specific Activity 3333nmol/min/mg.
应用	Functional Studies Western blot SDS-PAGE Other
形式	Liquid
补充说明	ab204856 (CREB peptide) can be utilized as a substrate for assessing kinase activity

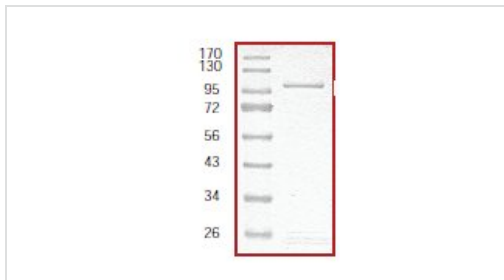
制备和贮存

稳定性和存储	Shipped on dry ice. Upon delivery aliquot and store at -80°C. Avoid freeze / thaw cycles. Preservative: None Constituents: 25% Glycerol, 50mM Tris HCl, 150mM Sodium chloride, 0.25mM DTT, 0.1mM EGTA, 0.1mM EDTA, 0.1mM PMSF, pH 7.5 This product is an active protein and may elicit a biological response in vivo, handle with caution.
--------	---

常规信息

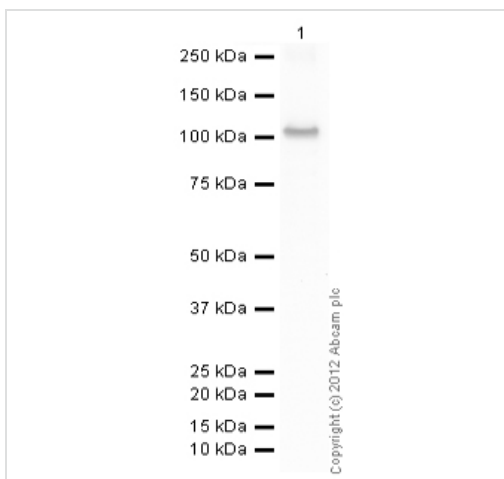
功能	This is a calcium-activated, phospholipid-dependent, serine- and threonine-specific enzyme. May play a role in cell motility by phosphorylating CSPG4. PKC is activated by diacylglycerol which in turn phosphorylates a range of cellular proteins. PKC also serves as the receptor for phorbol esters, a class of tumor promoters.
序列相似性	Belongs to the protein kinase superfamily. AGC Ser/Thr protein kinase family. PKC subfamily. Contains 1 AGC-kinase C-terminal domain. Contains 1 C2 domain. Contains 2 phorbol-ester/DAG-type zinc fingers. Contains 1 protein kinase domain.
细胞定位	Cytoplasm. Cell membrane. Nucleus.

图片



SDS Page analysis of ab55672

SDS-PAGE - PKC alpha protein (Tagged) (ab55672)



Anti-PKC alpha antibody ([ab66181](#)) at 1 µg/ml
+ Recombinant human PKC alpha protein
(ab55672) at 0.01 µg

Secondary

Goat Anti-Rabbit IgG H&L (HRP) preadsorbed
([ab97080](#)) at 1/5000 dilution
Developed using the ECL technique

Performed under reducing conditions.

Predicted band size : 77 kDa

Exposure time : 10 seconds

Western blot - Anti-PKC alpha antibody (

[ab66181](#)

)

Please note: All products are "FOR RESEARCH USE ONLY AND ARE NOT INTENDED FOR DIAGNOSTIC OR THERAPEUTIC USE"

Our Abpromise to you: Quality guaranteed and expert technical support

- Replacement or refund for products not performing as stated on the datasheet
- Valid for 12 months from date of delivery
- Response to your inquiry within 24 hours

- We provide support in Chinese, English, French, German, Japanese and Spanish
- Extensive multi-media technical resources to help you
- We investigate all quality concerns to ensure our products perform to the highest standards

If the product does not perform as described on this datasheet, we will offer a refund or replacement. For full details of the Abpromise, please visit <http://www.abcam.cn/abpromise> or contact our technical team.

Terms and conditions

- Guarantee only valid for products bought direct from Abcam or one of our authorized distributors