

Product datasheet

Recombinant human MLK2 protein ab125562

2 图像

概述

产品名称	Recombinant人MLK2 protein
蛋白长度	Protein fragment

描述

性质	Recombinant
来源	Baculovirus infected Sf9 cells
氨基酸序列	
Accession	<a href="#">Q02779</a>
种属	Human
分子量	76 kDa including tags
氨基酸	1 to 446

技术指标

Our [Abpromise guarantee](#) covers the use of **ab125562** in the following tested applications.

The application notes include recommended starting dilutions; optimal dilutions/concentrations should be determined by the end user.

生物活性	The specific activity of ab125562 was determined to be 48 nmol/min/mg.
应用	Western blot Functional Studies SDS-PAGE
纯度	> 85 % Densitometry. Purity was determined to be >85% by densitometry.
形式	Liquid
补充说明	<a href="#">ab64311</a> (Myelin Basic Protein protein) can be utilized as a substrate for assessing kinase activity

制备和贮存

稳定性和存储	Shipped on dry ice. Upon delivery aliquot and store at -80°C. Avoid freeze / thaw cycles.
--------	---

pH: 7.50

Constituents: 0.31% Glutathione, 0.002% PMSF, 0.004% DTT, 0.79% Tris HCl, 0.003% EDTA, 25% Glycerol, 0.88% Sodium chloride

This product is an active protein and may elicit a biological response in vivo, handle with caution.

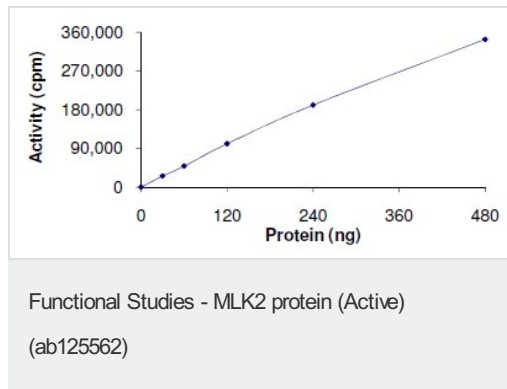
## 常规信息

<b>功能</b>	Activates the JUN N-terminal pathway.
<b>组织特异性</b>	Expressed in brain and skeletal muscle.
<b>序列相似性</b>	Belongs to the protein kinase superfamily. STE Ser/Thr protein kinase family. MAP kinase kinase kinase subfamily. Contains 1 protein kinase domain. Contains 1 SH3 domain.
<b>翻译后修饰</b>	Autophosphorylation on serine and threonine residues within the activation loop plays a role in enzyme activation.

## 图片



SDS-PAGE analysis of ab125562.



The specific activity of ab125562 was determined to be 48 nmol/min/mg by Kinase Assay.

**Please note:** All products are "FOR RESEARCH USE ONLY AND ARE NOT INTENDED FOR DIAGNOSTIC OR THERAPEUTIC USE"

## **Our Abpromise to you: Quality guaranteed and expert technical support**

---

- Replacement or refund for products not performing as stated on the datasheet
- Valid for 12 months from date of delivery
- Response to your inquiry within 24 hours
  
- We provide support in Chinese, English, French, German, Japanese and Spanish
- Extensive multi-media technical resources to help you
- We investigate all quality concerns to ensure our products perform to the highest standards

If the product does not perform as described on this datasheet, we will offer a refund or replacement. For full details of the Abpromise, please visit <http://www.abcam.cn/abpromise> or contact our technical team.

## **Terms and conditions**

---

- Guarantee only valid for products bought direct from Abcam or one of our authorized distributors