

Product datasheet

Recombinant human HSD3a protein ab109831

1 图像

概述

产品名称	重组人HSD3a蛋白
蛋白长度	Full length protein

描述

性质	Recombinant
来源	Escherichia coli

氨基酸序列

Accession [P17516](#)

种属 Human

序列
 MGSSHHHHHSSGLVPRGSHMDPKYQRVELNDGHFMPVLGFGTYAPPEVP
 RNRAVEVTKLAIEAGFRHIDSAYLYNNEEQVGLAIRSKIADGSVKREDIF
 YTSKLWCTFFQPQMVQPALESSLKKLQLDYVDLYLLHFPMALKPGETPLP
 KDENGKVI FDTV DLSATWEVMEKCKDAGLAKSIGVSNFNCRQLEMILNKP
 GLKYKPV CNQVECHPYLNQSKLLDFCKSKDIVLVAHSALGTQRHKLWVDP
 NSPVLLEDPVLCALAKKHKRTPALIALRYQLQRGVVVLAKSYNEQRIREN
 IQVFEFQLTSEDMKVL DGLNRNYRYVVMDFLMDHPDYPFSDEY

分子量 39 kDa including tags

氨基酸 1 to 343

标签 His tag N-Terminus

技术指标

Our [Abpromise guarantee](#) covers the use of **ab109831** in the following tested applications.

The application notes include recommended starting dilutions; optimal dilutions/concentrations should be determined by the end user.

生物活性 Specific activity is > 700 pmol/min/μg, and is defined as the amount of enzyme that catalyzes the reduction of 1.0 pmole 3-chlorobenzaldehyde in the presence of NADP per minute at pH 8.8 at 25°C.

应用 Functional Studies
 SDS-PAGE
 Mass Spectrometry

质谱法	MALDI-TOF
纯度	> 90 % SDS-PAGE. ab109831 was purified using conventional chromatography.
形式	Liquid

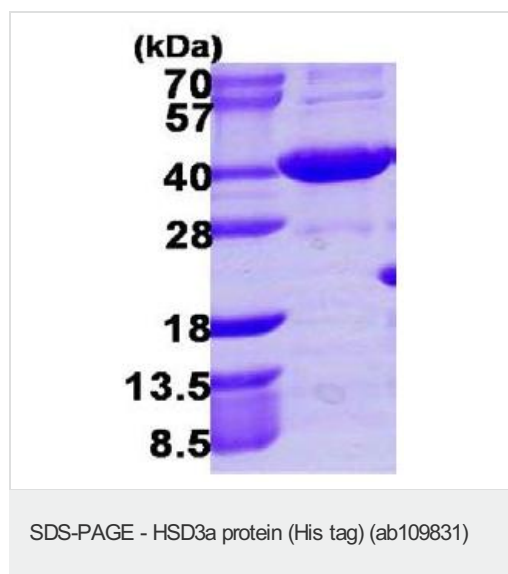
制备和贮存

稳定性和存储	Shipped at 4°C. Store at +4°C short term (1-2 weeks). Upon delivery aliquot. Store at -20°C or -80°C. Avoid freeze / thaw cycle. Preservative: None Constituents: 20% Glycerol, 0.58% Sodium chloride, 0.32% Tris HCl, 0.02% DTT, pH 8.0 This product is an active protein and may elicit a biological response in vivo, handle with caution.
--------	--

常规信息

功能	Catalyzes the transformation of the potent androgen dihydrotestosterone (DHT) into the less active form, 5-alpha-androstan-3-alpha,17-beta-diol (3-alpha-diol). Also has some 20-alpha-hydroxysteroid dehydrogenase activity. The biotransformation of the pesticide chlordecone (kepone) to its corresponding alcohol leads to increased biliary excretion of the pesticide and concomitant reduction of its neurotoxicity since bile is the major excretory route.
组织特异性	Liver specific.
序列相似性	Belongs to the aldo/keto reductase family.
翻译后修饰	The N-terminus is blocked.
细胞定位	Cytoplasm.

图片



15% SDS-PAGE image, using ab109831 at 3ug

Please note: All products are "FOR RESEARCH USE ONLY AND ARE NOT INTENDED FOR DIAGNOSTIC OR THERAPEUTIC USE"

Our Abpromise to you: Quality guaranteed and expert technical support

- Replacement or refund for products not performing as stated on the datasheet
- Valid for 12 months from date of delivery
- Response to your inquiry within 24 hours

- We provide support in Chinese, English, French, German, Japanese and Spanish
- Extensive multi-media technical resources to help you
- We investigate all quality concerns to ensure our products perform to the highest standards

If the product does not perform as described on this datasheet, we will offer a refund or replacement. For full details of the Abpromise, please visit <http://www.abcam.cn/abpromise> or contact our technical team.

Terms and conditions

- Guarantee only valid for products bought direct from Abcam or one of our authorized distributors