

Product datasheet

Recombinant human Eph receptor A1 protein ab101778

2 图像

概述

产品名称	重组人Eph receptor A1蛋白
蛋白长度	Protein fragment

描述

性质	Recombinant
来源	Baculovirus
氨基酸序列	
Accession	<a href="#">P21709</a>
种属	Human
分子量	72 kDa including tags
氨基酸	569 to 976

技术指标

Our [Abpromise guarantee](#) covers the use of **ab101778** in the following tested applications.

The application notes include recommended starting dilutions; optimal dilutions/concentrations should be determined by the end user.

生物活性	The Specific activity of ab101778 was determined to be 28 nmol/min/mg.
应用	Western blot Functional Studies
纯度	> 90 % Densitometry. Purity was determined to be >90% by densitometry.
形式	Liquid
补充说明	<a href="#">ab204877</a> (Poly (4:1 Glu, Tyr) peptide) can be utilized as a substrate for assessing kinase activity

制备和贮存

稳定性和存储	Shipped on dry ice. Upon delivery aliquot and store at -80°C. Avoid freeze / thaw cycles. Preservative: None
--------	---

Constituents: 25% Glycerol, 50mM Tris HCl, 150mM Sodium chloride, 10mM Glutathione, 0.25mM DTT, 0.1mM EDTA, 0.1mM PMSF, pH 7.5

This product is an active protein and may elicit a biological response in vivo, handle with caution.

## 常规信息

### 功能

Receptor tyrosine kinase which binds promiscuously membrane-bound ephrin-A family ligands residing on adjacent cells, leading to contact-dependent bidirectional signaling into neighboring cells. The signaling pathway downstream of the receptor is referred to as forward signaling while the signaling pathway downstream of the ephrin ligand is referred to as reverse signaling. Binds with a low affinity EFNA3 and EFNA4 and with a high affinity to EFNA1 which most probably constitutes its cognate/functional ligand. Upon activation by EFNA1 induces cell attachment to the extracellular matrix inhibiting cell spreading and motility through regulation of ILK and downstream RHOA and RAC. Plays also a role in angiogenesis and regulates cell proliferation. May play a role in apoptosis.

### 组织特异性

Overexpressed in several carcinomas.

### 序列相似性

Belongs to the protein kinase superfamily. Tyr protein kinase family. Ephrin receptor subfamily. Contains 1 Eph LBD (Eph ligand-binding) domain. Contains 2 fibronectin type-III domains. Contains 1 protein kinase domain. Contains 1 SAM (sterile alpha motif) domain.

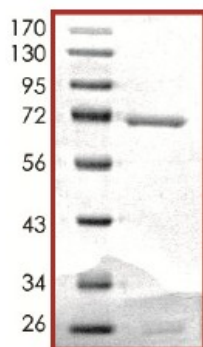
### 翻译后修饰

Phosphorylated. Autophosphorylation is stimulated by its ligand EFNA1. Ubiquitinated.

### 细胞定位

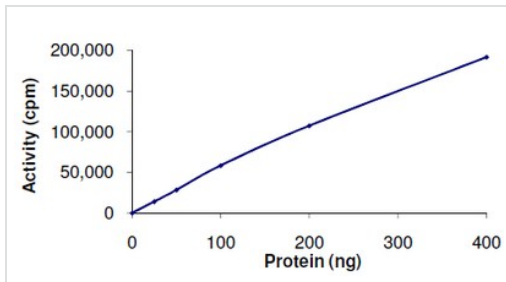
Cell membrane.

## 图片



SDS-PAGE showing ab101778 at approximately 72kDa.

SDS-PAGE - Eph receptor A1 protein (ab101778)



The Specific activity of ab101778 was determined to be 28 nmol/min/mg.

Functional Studies - Eph receptor A1 protein  
(ab101778)

**Please note:** All products are "FOR RESEARCH USE ONLY AND ARE NOT INTENDED FOR DIAGNOSTIC OR THERAPEUTIC USE"

### Our Abpromise to you: Quality guaranteed and expert technical support

- Replacement or refund for products not performing as stated on the datasheet
- Valid for 12 months from date of delivery
- Response to your inquiry within 24 hours
- We provide support in Chinese, English, French, German, Japanese and Spanish
- Extensive multi-media technical resources to help you
- We investigate all quality concerns to ensure our products perform to the highest standards

If the product does not perform as described on this datasheet, we will offer a refund or replacement. For full details of the Abpromise, please visit <http://www.abcam.cn/abpromise> or contact our technical team.

### Terms and conditions

- Guarantee only valid for products bought direct from Abcam or one of our authorized distributors