

Product datasheet

Recombinant human Casein Kinase 1 delta protein ab103955

2 图像

概述

产品名称	重组人Casein Kinase 1 delta蛋白
蛋白长度	Full length protein

描述

性质	Recombinant
来源	Baculovirus infected Sf9 cells
氨基酸序列	
Accession	P48730
种属	Human
分子量	72 kDa including tags
氨基酸	1 to 415

技术指标

Our [Abpromise guarantee](#) covers the use of **ab103955** in the following tested applications.

The application notes include recommended starting dilutions; optimal dilutions/concentrations should be determined by the end user.

生物活性	The Specific activity of ab103955 was determined to be 82 nmol/min/mg.
应用	Functional Studies SDS-PAGE Western blot
纯度	> 80 % Densitometry. Purity was determined to be >80% by densitometry.
形式	Liquid
补充说明	ab91090 (Cow Casein full length protein) can be utilized as a substrate for assessing Kinase activity

制备和贮存

稳定性和存储	Shipped on dry ice. Upon delivery aliquot and store at -80°C. Avoid freeze / thaw cycles.
--------	---

Preservative: None

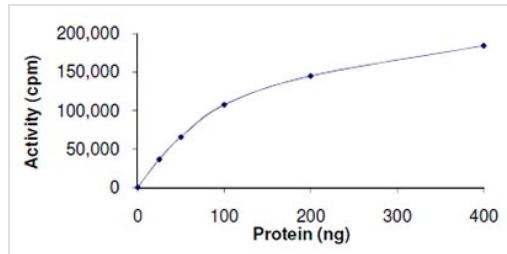
Constituents: 25% Glycerol, 50mM Tris HCl, 150mM Sodium chloride, 10mM Glutathione, 0.25mM DTT, 0.1mM EDTA, 0.1mM PMSF, pH 7.5

This product is an active protein and may elicit a biological response in vivo, handle with caution.

常规信息

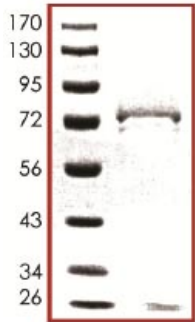
功能	Casein kinases are operationally defined by their preferential utilization of acidic proteins such as caseins as substrates. It can phosphorylate a large number of proteins. Participates in Wnt signaling. Central component of the circadian clock. May act as a negative regulator of circadian rhythmicity by phosphorylating PER1 and PER2. Retains PER1 in the cytoplasm.
组织特异性	Expressed in all tissues examined, including brain, heart, lung, liver, pancreas, kidney, placenta and skeletal muscle. In blood, highly expressed in hemopoietic cells and mature granulocytes. Also found in monocytes and lymphocytes.
疾病相关	Defects in CSNK1D are a cause of familial advanced sleep-phase syndrome (FASPS) [MIM:604348]. FASPS is characterized by very early sleep onset and offset. Individuals are 'morning larks' with a 4 hours advance of the sleep, temperature and melatonin rhythms.
序列相似性	Belongs to the protein kinase superfamily. CK1 Ser/Thr protein kinase family. Casein kinase I subfamily. Contains 1 protein kinase domain.
翻译后修饰	Autophosphorylated on serine and threonine residues.
细胞定位	Cytoplasm. Nucleus.

图片



The Specific activity of ab103955 was determined to be 82 nmol/min/mg.

Functional Studies - Casein Kinase 1 delta protein
(ab103955)



SDS-PAGE showing ab103955 at approximately 72kDa.

SDS-PAGE - Casein Kinase 1 delta protein
(ab103955)

Please note: All products are "FOR RESEARCH USE ONLY AND ARE NOT INTENDED FOR DIAGNOSTIC OR THERAPEUTIC USE"

Our Abpromise to you: Quality guaranteed and expert technical support

- Replacement or refund for products not performing as stated on the datasheet
- Valid for 12 months from date of delivery
- Response to your inquiry within 24 hours
- We provide support in Chinese, English, French, German, Japanese and Spanish
- Extensive multi-media technical resources to help you
- We investigate all quality concerns to ensure our products perform to the highest standards

If the product does not perform as described on this datasheet, we will offer a refund or replacement. For full details of the Abpromise, please visit <http://www.abcam.cn/abpromise> or contact our technical team.

Terms and conditions

- Guarantee only valid for products bought direct from Abcam or one of our authorized distributors