

Product datasheet

Recombinant human CDK6 + CCND3 protein ab84557

2 图像

概述

产品名称	Recombinant人CDK6 + CCND3 protein
蛋白长度	Full length protein

描述

性质	Recombinant
来源	Baculovirus infected Sf9 cells

氨基酸序列

种属	Human
标签	His tag N-Terminus

技术指标

Our [Abpromise guarantee](#) covers the use of **ab84557** in the following tested applications.

The application notes include recommended starting dilutions; optimal dilutions/concentrations should be determined by the end user.

生物活性	Specific activity of ab84557 was determined to be 36 nmol/min/mg.
------	---

应用	Western blot Functional Studies SDS-PAGE
----	--

形式	Liquid
----	--------

补充说明	ab56270 (Human Rb protein fragment) can be utilized as a substrate for assessing Kinase activity
------	--

制备和贮存

稳定性和存储	Shipped on dry ice. Upon delivery aliquot and store at -80°C. Avoid freeze / thaw cycles. Preservative: 150mM Imidazole Constituents: 25% Glycerol, 50mM Sodium phosphate, 300mM Sodium chloride, 0.2mM DTT, 0.1mM PMSF, pH 7.0 This product is an active protein and may elicit a biological response in vivo, handle with caution.
--------	---

常规信息

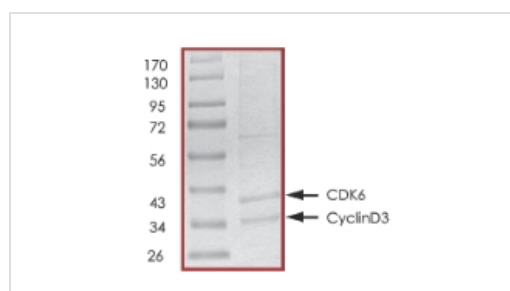
相关性

CDK family members are highly similar to the gene products of *Saccharomyces cerevisiae* cdc28, and *Schizosaccharomyces pombe* cdc2, and are known to be important regulators of cell cycle progression. This kinase is a catalytic subunit of the protein kinase complex that is important for cell cycle G1 phase progression and G1/S transition. The activity of Cdk6 first appears in mid-G1 phase, and is controlled by regulatory subunits including D-type cyclins and members of INK4 family of CDK inhibitors. This kinase, as well as CDK4, has been shown to phosphorylate, and thus regulate the activity of, tumor suppressor protein Rb. Cyclin D3 is a G1 cyclin closely related to cyclin D1 and D2. Cyclins D1, D2, and D3 are members of a growing superfamily of cyclins, proteins that govern transitions through distinct phases of the cell cycle by regulating the activity of cyclin-dependent kinases (cdks). All three known members of the D-type subfamily form active kinase complexes in vivo with a distinct subset of cdks, particularly with cdk4 and cdk6.

细胞定位

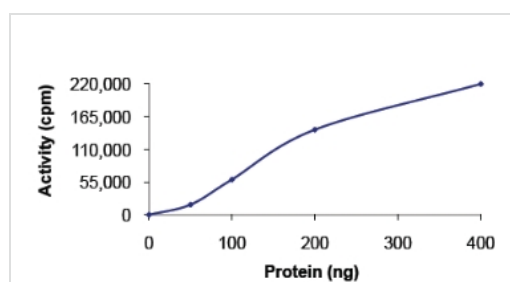
CCND3: Cytoplasm. Nucleus

图片



SDS-PAGE of ab84557. CDK6 approximate MW 40kDa and CCND3 approximate MW 35kDa.

SDS-PAGE - CDK6 + CCND3 protein (Active)
(ab84557)



Kinase Assay: Specific activity of CDK6/CCND3 was determined to be 36 nmol/min/mg using protein substrate Rb.

Functional Studies - CDK6 + CCND3 protein (Active)
(ab84557)

Please note: All products are "FOR RESEARCH USE ONLY AND ARE NOT INTENDED FOR DIAGNOSTIC OR THERAPEUTIC USE"

Our Abpromise to you: Quality guaranteed and expert technical support

- Replacement or refund for products not performing as stated on the datasheet

- Valid for 12 months from date of delivery
- Response to your inquiry within 24 hours

- We provide support in Chinese, English, French, German, Japanese and Spanish
- Extensive multi-media technical resources to help you
- We investigate all quality concerns to ensure our products perform to the highest standards

If the product does not perform as described on this datasheet, we will offer a refund or replacement. For full details of the Abpromise, please visit <http://www.abcam.cn/abpromise> or contact our technical team.

Terms and conditions

- Guarantee only valid for products bought direct from Abcam or one of our authorized distributors