

Product datasheet

Recombinant human ALDH2 protein ab87415

1 References 2 图像

概述

产品名称 重组人ALDH2蛋白
 蛋白长度 Full length protein

描述

性质 Recombinant
 来源 Escherichia coli

氨基酸序列

Accession [P05091](#)

种属 Human

序列 MSAAATQAVP APNQQPEVFC NQIFINNEWH
 DAVSRKTFPT VNPSTGEVIC QVAEGDKEDV
 DKAVKAARAA FQLGSPWRRM DASHRGRLLN
 RLADLIERDR TYLAALETLD NGKPYVISYL
 VDLDMLKCL RYYAGWADKY HGKTIPIDGD
 FFSYTRHEPV GVCGQIIPWN FPLLMQAWKL
 GPALATGNV VMKVAEQTPL TALYVANLIK
 EAGFPPGVVN IVPFGPTAG AAIASHEDVD
 KVAFTGSTEI GRVIQVAAGS SNLKRVTLEL
 GKGSPNIIMS DADMDWAVEQ AHFALFFNQG
 QCCCAGSRTF VQEDIYDEFV ERSVARAKSR
 VVGPNPFSKT EQGPQVDETQ FKKILGYINT
 GKQEGAKLLC GGGIAADRGY FIQPTVFGDV
 QDGMTIAKEE IFGPVMQILK FKTIEEVVGR
 ANNSTYGLAA AVFTKDLDKA NYLSQALQAG
 TVWVNCYDVF GAQSPFGGYK MSGSGRELGE
 YGLQAYTEVK TVTVKVPQKN S

分子量 55 kDa

氨基酸 18 to 517

技术指标

Our [Abpromise guarantee](#) covers the use of **ab87415** in the following tested applications.

The application notes include recommended starting dilutions; optimal dilutions/concentrations should be determined by the end user.

生物活性 Specific activity is > 250pmol/min/ug, and was obtained by measuring the increase of NADH in absorbance at 340 nm resulting from the reduction of NAD at pH 8.0 at 25C.

应用 SDS-PAGE
Functional Studies
Western blot

内毒素水平 < 1.000 Eu/mg

纯度 > 90 % SDS-PAGE.
ab87415 is purified using conventional chromatography techniques.

形式 Liquid

补充说明 Endotoxin:< 1.0 EU per 1 µg of protein (determined by LAL method).

制备和贮存

稳定性和存储 Shipped at 4°C. Upon delivery aliquot and store at -20°C or -80°C. Avoid repeated freeze / thaw cycles.

Preservative: None

Constituents: 10% Glycerol, 20mM Tris HCl, 1mM EDTA, 1mM DTT, pH 7.5

This product is an active protein and may elicit a biological response in vivo, handle with caution.

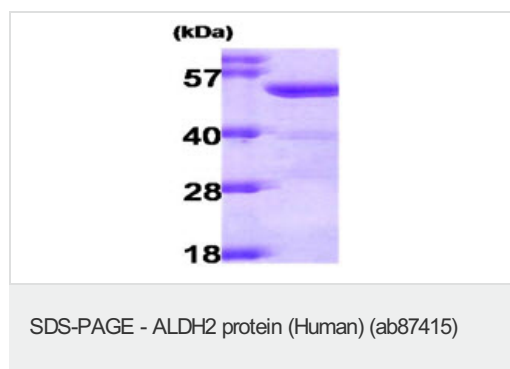
常规信息

通路 Alcohol metabolism; ethanol degradation; acetate from ethanol: step 2/2.

序列相似性 Belongs to the aldehyde dehydrogenase family.

细胞定位 Mitochondrion matrix.

图片



15% SDS-PAGE showing 3µg ab87415 at approximately 54.5 kDa.



Western blot - Anti-ALDH2 antibody (

[ab70917](#)

)

All lanes : Anti-ALDH2 antibody ([ab70917](#)) at 1/100 dilution

Lane 1 : Natural human Alpha 2 Antiplasmin protein ([ab77936](#)) at 0.1 µg

Lane 2 : Natural human Alpha 2 Antiplasmin protein ([ab77936](#)) at 0.01 µg

Secondary

All lanes : Goat Anti-Rabbit IgG H&L (HRP) preadsorbed ([ab97080](#)) at 1/5000 dilution

Developed using the ECL technique.

Performed under reducing conditions.

Predicted band size: 56 kDa

Exposure time: 10 seconds

Please note: All products are "FOR RESEARCH USE ONLY AND ARE NOT INTENDED FOR DIAGNOSTIC OR THERAPEUTIC USE"

Our Abpromise to you: Quality guaranteed and expert technical support

- Replacement or refund for products not performing as stated on the datasheet
- Valid for 12 months from date of delivery
- Response to your inquiry within 24 hours
- We provide support in Chinese, English, French, German, Japanese and Spanish
- Extensive multi-media technical resources to help you
- We investigate all quality concerns to ensure our products perform to the highest standards

If the product does not perform as described on this datasheet, we will offer a refund or replacement. For full details of the Abpromise, please visit <http://www.abcam.cn/abpromise> or contact our technical team.

Terms and conditions

- Guarantee only valid for products bought direct from Abcam or one of our authorized distributors