

Product datasheet

Recombinant human AKT3 protein ab60324

2 图像

概述

产品名称	重组人AKT3蛋白
蛋白长度	Full length protein

描述

性质	Recombinant
来源	Baculovirus infected Sf9 cells

氨基酸序列

Accession	Q9Y243
种属	Human
分子量	85 kDa
氨基酸	1 to 479
标签	GST tag N-Terminus

技术指标

Our [Abpromise guarantee](#) covers the use of **ab60324** in the following tested applications.

The application notes include recommended starting dilutions; optimal dilutions/concentrations should be determined by the end user.

生物活性	Specific activity: 206 nmol/min/mg
应用	SDS-PAGE Functional Studies
纯度	> 90 % SDS-PAGE. Purity: >90% as determined by densitometry.
形式	Liquid
补充说明	ab204851 (AKT peptide) can be utilized as a substrate for assessing kinase activity

制备和贮存

稳定性和存储	Shipped on dry ice. Upon delivery aliquot and store at -80°C. Avoid freeze / thaw cycles.
--------	---

Preservative: None

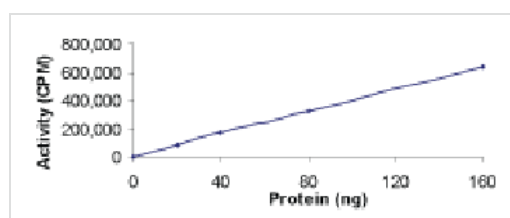
Constituents: 25% Glycerol, 50mM Tris HCl, 150mM Sodium chloride, 0.25mM DTT, 0.1mM EGTA, 0.1mM EDTA, 0.1mM PMSF, pH 7.5

This product is an active protein and may elicit a biological response in vivo, handle with caution.

常规信息

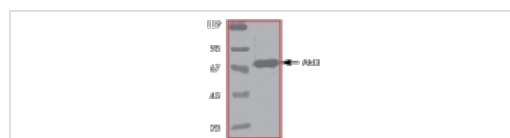
功能	IGF-1 leads to the activation of AKT3, which may play a role in regulating cell survival. Capable of phosphorylating several known proteins. Truncated isoform 2/PKB gamma 1 without the second serine phosphorylation site could still be stimulated but to a lesser extent.
组织特异性	In adult tissues, it is highly expressed in brain, lung and kidney, but weakly in heart, testis and liver. In fetal tissues, it is highly expressed in heart, liver and brain and not at all in kidney.
序列相似性	Belongs to the protein kinase superfamily. AGC Ser/Thr protein kinase family. RAC subfamily. Contains 1 AGC-kinase C-terminal domain. Contains 1 PH domain. Contains 1 protein kinase domain.
结构域	Binding of the PH domain to the phosphatidylinositol 3-kinase alpha (PI(3)K) results in its targeting to the plasma membrane.
翻译后修饰	Phosphorylation on Thr-305 and Ser-472 is required for full activity (By similarity). Phosphorylated upon DNA damage, probably by ATM or ATR. Ubiquitinated. When fully phosphorylated and translocated into the nucleus, undergoes 'Lys-48'-polyubiquitination catalyzed by TTC3, leading to its degradation by the proteasome.
细胞定位	Cytoplasm. Membrane. Membrane-associated after cell stimulation leading to its translocation.

图片



Sample Kinase Activity Plot.

Functional Studies - AKT3 protein (Active) (ab60324)



ab60324 on SDS-PAGE, MW ~85kDa.

SDS-PAGE - AKT3 protein (Active) (ab60324)

Please note: All products are "FOR RESEARCH USE ONLY AND ARE NOT INTENDED FOR DIAGNOSTIC OR THERAPEUTIC USE"

Our Abpromise to you: Quality guaranteed and expert technical support

- Replacement or refund for products not performing as stated on the datasheet
- Valid for 12 months from date of delivery
- Response to your inquiry within 24 hours

- We provide support in Chinese, English, French, German, Japanese and Spanish
- Extensive multi-media technical resources to help you
- We investigate all quality concerns to ensure our products perform to the highest standards

If the product does not perform as described on this datasheet, we will offer a refund or replacement. For full details of the Abpromise, please visit <http://www.abcam.cn/abpromise> or contact our technical team.

Terms and conditions

- Guarantee only valid for products bought direct from Abcam or one of our authorized distributors