

Product datasheet

Recombinant Human alpha Sarcoglycan protein ab114733

1 图像

概述

产品名称	Recombinant人alpha Sarcoglycan protein
蛋白长度	Protein fragment

描述

性质	Recombinant
来源	Wheat germ

氨基酸序列

Accession	<a href="#">Q16586</a>
种属	Human
序列	TTLHPLVGRVVFVHTLDHETFLSLPEHVAVPPAVHITYHAHLQGHPDLPRW LRYTQRSPHHPGFLYGSATPEDRGLQVIEVTAYNRDSFDTRQRLVLEIG DPEGPLLP
分子量	38 kDa including tags
氨基酸	26 to 133

技术指标

Our [Abpromise guarantee](#) covers the use of **ab114733** in the following tested applications.

The application notes include recommended starting dilutions; optimal dilutions/concentrations should be determined by the end user.

应用	ELISA Western blot SDS-PAGE
形式	Liquid
补充说明	Protein concentration is above or equal to 0.05 mg/ml. Best used within three months from the date of receipt.

制备和贮存

稳定性和存储	Shipped on dry ice. Upon delivery aliquot and store at -80°C. Avoid freeze / thaw cycles.
--------	---

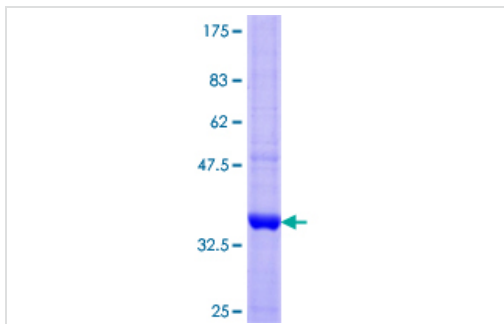
pH: 8.00

Constituents: 0.3% Glutathione, 0.79% Tris HCl

## 常规信息

<b>功能</b>	Component of the sarcoglycan complex, a subcomplex of the dystrophin-glycoprotein complex which forms a link between the F-actin cytoskeleton and the extracellular matrix.
<b>组织特异性</b>	Most strongly expressed in skeletal muscle. Also expressed in cardiac muscle and, at much lower levels, in lung. In the fetus, most abundant in cardiac muscle and, at lower levels, in lung. Also detected in liver and kidney. Not expressed in brain.
<b>疾病相关</b>	Defects in SGCA are the cause of limb-girdle muscular dystrophy type 2D (LGMD2D) [MIM:608099]; also known as Duchenne-like muscular dystrophy autosomal recessive type 2 or severe childhood autosomal recessive muscular dystrophy (SCARM). LGMD2D is an autosomal recessive degenerative myopathy characterized by progressive muscle wasting from early childhood with loss of independent ambulation by teenage years. Muscle biopsy shows necrosis, decreased immunostaining for alpha sarcoglycan, and adhalin deficiency. The phenotype is less severe than LGMD2C.
<b>序列相似性</b>	Belongs to the sarcoglycan alpha/epsilon family.
<b>细胞定位</b>	Cell membrane > sarcolemma. Cytoplasm > cytoskeleton.

## 图片



12.5% SDS-PAGE showing ab114733 at approximately 37.5kDa.  
Stained with Coomassie Blue.

SDS-PAGE - alpha Sarcoglycan protein (ab114733)

**Please note:** All products are "FOR RESEARCH USE ONLY AND ARE NOT INTENDED FOR DIAGNOSTIC OR THERAPEUTIC USE"

## Our Abpromise to you: Quality guaranteed and expert technical support

- Replacement or refund for products not performing as stated on the datasheet
- Valid for 12 months from date of delivery
- Response to your inquiry within 24 hours
- We provide support in Chinese, English, French, German, Japanese and Spanish
- Extensive multi-media technical resources to help you
- We investigate all quality concerns to ensure our products perform to the highest standards

If the product does not perform as described on this datasheet, we will offer a refund or replacement. For full details of the Abpromise, please visit <http://www.abcam.cn/abpromise> or contact our technical team.

## Terms and conditions

---

- Guarantee only valid for products bought direct from Abcam or one of our authorized distributors