

Product datasheet

Recombinant Human SorLA protein ab114683

1 图像

概述

产品名称	重组人SorLA蛋白
蛋白长度	Protein fragment

描述

性质	Recombinant
来源	Wheat germ
氨基酸序列	
Accession	Q92673
种属	Human
序列	SAALQPEPIKVYGVSLNDSHNQMVVHWAGEKSNVIVALARDSLALARPK SSDVYVSYDYGKSFKKISDKLNFGLGNRSEAVIAQFYHSPADNKRYIFAD
分子量	37 kDa including tags
氨基酸	82 to 181
标签	GST tag N-Terminus

技术指标

Our [Abpromise guarantee](#) covers the use of **ab114683** in the following tested applications.

The application notes include recommended starting dilutions; optimal dilutions/concentrations should be determined by the end user.

应用	Western blot SDS-PAGE ELISA
形式	Liquid
补充说明	Protein concentration is above or equal to 0.05 mg/ml. Best used within three months from the date of receipt.

制备和贮存

稳定性和存储	Shipped on dry ice. Upon delivery aliquot and store at -80°C. Avoid freeze / thaw cycles.
--------	---

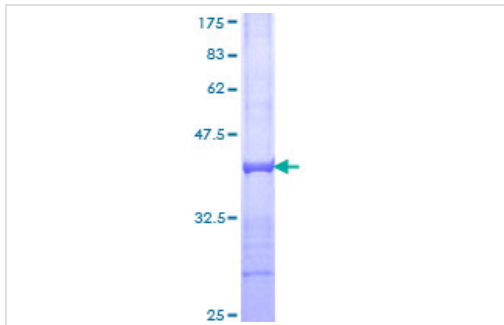
pH: 8.00

Constituents: 0.3% Glutathione, 0.79% Tris HCl

常规信息

功能	Likely to be a multifunctional endocytic receptor, that may be implicated in the uptake of lipoproteins and of proteases. Binds LDL, the major cholesterol-carrying lipoprotein of plasma, and transports it into cells by endocytosis. Binds the receptor-associated protein (RAP). Could play a role in cell-cell interaction.
组织特异性	Expressed mainly in brain, where it is most abundant in the cerebellum, cerebral cortex and the occipital pole; low expression in the putamen and the thalamus. According to PubMed:9157966, found in spinal cord, testis, liver, kidney and pancreas with detectable levels in placenta, lung and heart. According to PubMed:8940146, expressed in the prostate, ovary, thyroid and spleen, but not found in kidney, liver, lung, skeletal muscle, bone marrow and adrenals.
序列相似性	Belongs to the SORL1 family. Contains 5 BNR repeats. Contains 1 EGF-like domain. Contains 6 fibronectin type-III domains. Contains 11 LDL-receptor class A domains. Contains 5 LDL-receptor class B repeats.
翻译后修饰	The propeptide removed in the N-terminus may be cleaved by furin or homologous proteases.
细胞定位	Membrane.

图片



SDS-PAGE - SorLA protein (ab114683)

ab114683 analysed on a 12.5% SDS-PAGE gel stained with Coomassie Blue.

Please note: All products are "FOR RESEARCH USE ONLY AND ARE NOT INTENDED FOR DIAGNOSTIC OR THERAPEUTIC USE"

Our Promise to you: Quality guaranteed and expert technical support

- Replacement or refund for products not performing as stated on the datasheet
- Valid for 12 months from date of delivery
- Response to your inquiry within 24 hours
- We provide support in Chinese, English, French, German, Japanese and Spanish

- Extensive multi-media technical resources to help you
- We investigate all quality concerns to ensure our products perform to the highest standards

If the product does not perform as described on this datasheet, we will offer a refund or replacement. For full details of the Abpromise, please visit <http://www.abcam.cn/abpromise> or contact our technical team.

Terms and conditions

- Guarantee only valid for products bought direct from Abcam or one of our authorized distributors