

## Product datasheet

# Recombinant Human Seryl-tRNA synthetase protein ab116885

### 1 图像

#### 概述

产品名称	重组人Seryl-tRNA synthetase蛋白
蛋白长度	Full length protein

#### 描述

性质	Recombinant
来源	Wheat germ

#### 氨基酸序列

Accession [P49591](#)

种属 Human

序列  
 MVLDDLDFRVDKGGDPALIRETQEKRFKDPGLVDQLVKADSEWRRRCFRFRA  
 DNLNKLKLNLCSTIGEKMKKKEPVGDDSEVPENVLSFDDLTADALANLKV  
 SQIKKVRLLIDEAILKCAERIKLEAERFENLREIGNLLHPSVPISNDED  
 VDNKVERIWGDCTVRKKYSHVDLVVMVDGFEGEKGAVVAGSRGYFLKGVL  
 VFLEQALIQYALRTLGSRGYIPIYTPFFMRKEVMQEVQALSQFDEELYKV  
 IGKGSEKSDDNSYDEKYL IATSEQPIAALHRDEWLRPEDLPIKYAGLSTC  
 FRQEVGSHGRDTRGIFRVHQFEKIEQFVYSSPHDNKSWEMFEEMITTAEE  
 FYQSLGIPYHIVNIVSGSLNHAASKKLDLEAWFPGSGAFRELVSCSNCTD  
 YQARRLRIRYQTKKMDKVEFVHMLNATMCATTRTICAILENYQTEKGI  
 TVPEKLKEFMPPLQELIPFVKPAIEQEPSKKQKKQHEGSKKKAARDV  
 TLENRLQNMEVTDA

分子量 83 kDa including tags

氨基酸 1 to 515

#### 技术指标

Our [Abpromise guarantee](#) covers the use of **ab116885** in the following tested applications.

The application notes include recommended starting dilutions; optimal dilutions/concentrations should be determined by the end user.

应用	ELISA
	Western blot
	SDS-PAGE

形式 Liquid

## 补充说明

Protein concentration is above or equal to 0.05 mg/ml. Best use within three months from the date of receipt of this protein.

## 制备和贮存

### 稳定性和存储

Shipped on dry ice. Upon delivery aliquot and store at -80°C. Avoid freeze / thaw cycles.

pH: 8.00

Constituents: 0.3% Glutathione, 0.79% Tris HCl

## 常规信息

### 功能

Catalyzes the attachment of serine to tRNA(Ser). Is also probably able to aminoacylate tRNA(Sec) with serine, to form the misacylated tRNA L-seryl-tRNA(Sec), which will be further converted into selenocysteinyl-tRNA(Sec).

### 通路

Aminoacyl-tRNA biosynthesis; selenocysteinyl-tRNA(Sec) biosynthesis; L-seryl-tRNA(Sec) from L-serine and tRNA(Sec): step 1/1.

### 序列相似性

Belongs to the class-II aminoacyl-tRNA synthetase family. Type-1 seryl-tRNA synthetase subfamily.

### 结构域

Consists of two distinct domains, a catalytic core and a N-terminal extension that is involved in tRNA binding.

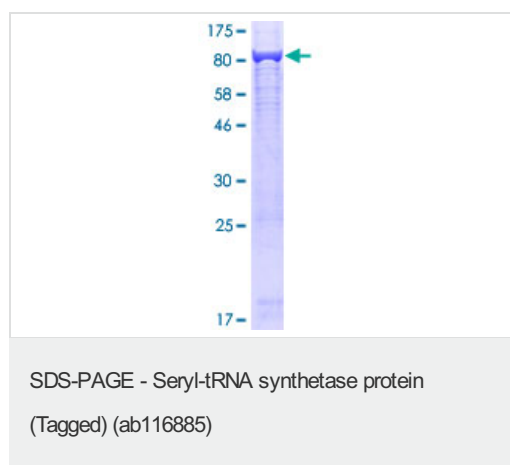
### 翻译后修饰

Phosphorylated upon DNA damage, probably by ATM or ATR.

### 细胞定位

Cytoplasm.

## 图片



12.5% SDS-PAGE showing ab116885 at approximately 82.65kDa, stained with Coomassie Blue.

**Please note:** All products are "FOR RESEARCH USE ONLY AND ARE NOT INTENDED FOR DIAGNOSTIC OR THERAPEUTIC USE"

## Our Abpromise to you: Quality guaranteed and expert technical support

- Replacement or refund for products not performing as stated on the datasheet
- Valid for 12 months from date of delivery

- Response to your inquiry within 24 hours
- We provide support in Chinese, English, French, German, Japanese and Spanish
- Extensive multi-media technical resources to help you
- We investigate all quality concerns to ensure our products perform to the highest standards

If the product does not perform as described on this datasheet, we will offer a refund or replacement. For full details of the Abpromise, please visit <http://www.abcam.cn/abpromise> or contact our technical team.

### **Terms and conditions**

---

- Guarantee only valid for products bought direct from Abcam or one of our authorized distributors