

Product datasheet

Recombinant Human Sarcomeric Alpha Actinin protein ab92234

1 图像

概述

产品名称	Recombinant人Sarcomeric Alpha Actinin protein
蛋白长度	Protein fragment

描述

性质	Recombinant
来源	Escherichia coli

氨基酸序列

种属	Human
序列	<p>QAETAANRICKVLAVNQENERLMEEYERLASELLEWIRRTIPWLENRTPE KTM QAMQKKLEDFRDYRRKHKPPKVQEKCLEINFNTLQTKLRISNRP AFMPSEGK MVSDIAGAWQRLEQAEKGYEEWLLNEIRRLERLEHLAEKF RQKASTHETWAYG KEQILLQKDYESASLTEVRALLRKHEAFESDLAAH QDRVEQIAAIAQELNELD YHDAVNVNDRQCQICDQWDRLGTLTQKRRE ALERMEKLLLETIDQLHLEFAKRA APFNNWMEGAMEDLQDMFIVHSIEE IQSLITAHEQFKATLPEADGERQSIMAI QNEVEKVIQSYNIRISSNP YSTVTMDELRTKWDKVKQLVPIRDQSLQEELAR QHANERLRRQFAAQA NAIGPWIQNKMEEIARSSIQITGALEDQMNQLKQYEHN IINYKNNIDK LEGDHLIQEALVFDNKHTNYTMEHIRVGWELLLTTIARTINE VETQI LTRDAKGITQEQMNEFRASFNHFDRRKNGLMDHEDFRACLISMGYDLG EAEFARIMTLVDPNGQGTVTQSFIDFMTRETADTDTAEQVIASFRILAS DKP YILAEELRRELPPDQAQYCIKRMPAYSGPGSVPGALDYAAFSS</p>

氨基酸	261 to 886
-----	------------

技术指标

Our [Abpromise guarantee](#) covers the use of **ab92234** in the following tested applications.

The application notes include recommended starting dilutions; optimal dilutions/concentrations should be determined by the end user.

应用 SDS-PAGE

形式 Lyophilised

制备和贮存

稳定性和存储 Shipped at 4°C. Upon delivery aliquot and store at -80°C. Avoid freeze / thaw cycles.

Preservative: None

Constituents: 0.5% Trehalose, 6M Urea, 100mM Sodium phosphate, 10mM Sodium chloride, pH 4.5

复溶 Reconstitution with 136 µl aqua dest.

常规信息

功能 F-actin cross-linking protein which is thought to anchor actin to a variety of intracellular structures. This is a bundling protein.

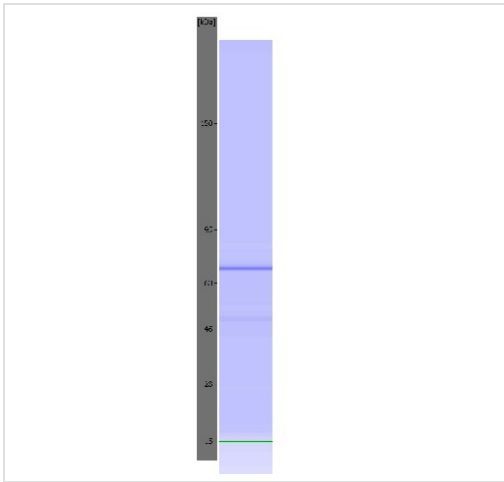
组织特异性 Expressed in both skeletal and cardiac muscle.

疾病相关 Defects in ACTN2 are the cause of cardiomyopathy dilated type 1AA (CMD1AA) [MIM:612158]. Dilated cardiomyopathy is a disorder characterized by ventricular dilation and impaired systolic function, resulting in congestive heart failure and arrhythmia. Patients are at risk of premature death.

序列相似性 Belongs to the alpha-actinin family.
Contains 1 actin-binding domain.
Contains 2 CH (calponin-homology) domains.
Contains 2 EF-hand domains.
Contains 4 spectrin repeats.

细胞定位 Cytoplasm > myofibril > sarcomere > Z line. Colocalizes with MYOZ1 and FLNC at the Z-lines of skeletal muscle.

图片



SDS-PAGE - Sarcomeric Alpha Actinin protein
(Tagged-His Tag) (ab92234)

The image shows an electrophoretic assay performed using an Agilent 5100 ALP. In some images coloured control bands can be seen at 15 kDa (green) and/or 240 kDa (purple). The protein-specific band is blue.

Please note: All products are "FOR RESEARCH USE ONLY AND ARE NOT INTENDED FOR DIAGNOSTIC OR THERAPEUTIC USE"

Our Abpromise to you: Quality guaranteed and expert technical support

- Replacement or refund for products not performing as stated on the datasheet
- Valid for 12 months from date of delivery
- Response to your inquiry within 24 hours
- We provide support in Chinese, English, French, German, Japanese and Spanish
- Extensive multi-media technical resources to help you
- We investigate all quality concerns to ensure our products perform to the highest standards

If the product does not perform as described on this datasheet, we will offer a refund or replacement. For full details of the Abpromise, please visit <http://www.abcam.cn/abpromise> or contact our technical team.

Terms and conditions

- Guarantee only valid for products bought direct from Abcam or one of our authorized distributors