

Product datasheet

Recombinant Human ST14 protein ab114597

1 图像

概述

产品名称	Recombinant人ST14 protein
蛋白长度	Full length protein

描述

性质	Recombinant
来源	Wheat germ

氨基酸序列

Accession [Q9Y5Y6](#)

种属 Human

序列  
 MGSDRARKGGGGPKDFGAGLKYNSRHEKVNGLEEGVEFLPVNNVKKVEKH  
 GPGRWVLA AVLIGLLLVLLGIGFLVWHLQYRDVRVQKVFNGYMRITNEN  
 FVDAYENSNSTEFVSLASKVKDALKLLYSGVPFLGPYHKESAVTAFSEGS  
 VIAYYWSEFSIPQHLVEEAERVMAEERVVMLPPRARSLKSFVVTSVVAFP  
 TDSKTVQRTQDNSCSFGLHARGVELMRFTTPGFDPSPYPAHARCQWALRG  
 DADSVLSLTFRSFDLASCDEGSDLVTYNTLSPMEPHALVQLCGTYPPS  
 YNLTFHSSQNVLLITLITNTERRHPGFEATFFQLPRMSSCGRLRKAQGT  
 FNSPYYPGHYPPNIDCTWNI EVPNQHVKVRKFFYLLEPGVPAGTCPKD  
 YVEINGEKYCGERSQFVVTSNSNKITVRFHSDQSYTDTGFLAEYLSYDSS  
 DPCPGQFTCRTGRCIRKELRCDGWADCTDHSDELNCSCDAGHQFTCKNKF  
 CKPLFWVCDVNDGDNSEDEQGCSCPAQTFRC SNGKCLSKSQCCNGKDDC  
 GDGSD EASCPKVNVTCTKHTYRCLNGLCLSKGNPECDGKEDCS DGSDEK  
 DCDCGLRSFTRQARVVGTD ADEGEWPQVSLHALGQGHICGASLISP NW  
 LVSAHCYIDDRGF RYSDPTQWTAFLGLHDQSQRSAPGVQERRLKR IISH  
 PFFNDFTFDYDIALLELEKPAEYSSMVRPICLPDASHVFPAGKAIWVTGW  
 GHTQYGGTGALILQKGEIRVINQTT CENLLPQQITPRMMCVGFLSGGVDS  
 CQGD SGGPLSSVEADGRIFQAGVVSWGDGCAQRNKP GYVYTR LPLFRDWIK  
 ENTGV

分子量 120 kDa including tags

氨基酸 1 to 855

技术指标

Our [Abpromise guarantee](#) covers the use of **ab114597** in the following tested applications.

The application notes include recommended starting dilutions; optimal dilutions/concentrations should be determined by the end user.

<b>应用</b>	ELISA SDS-PAGE Western blot
<b>形式</b>	Liquid
<b>补充说明</b>	Protein concentration is above or equal to 0.05 mg/ml. Best used within three months from the date of receipt.

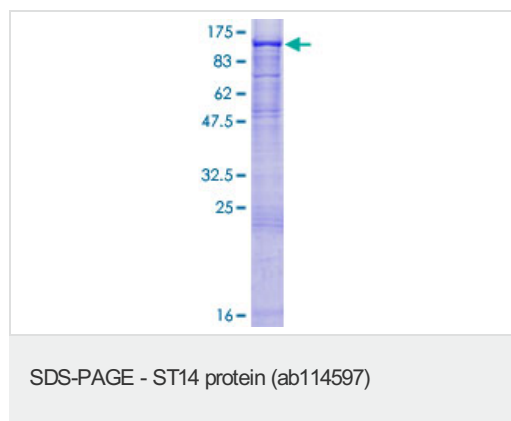
## 制备和贮存

<b>稳定性和存储</b>	Shipped on dry ice. Upon delivery aliquot and store at -80°C. Avoid freeze / thaw cycles. pH: 8.00 Constituents: 0.3% Glutathione, 0.79% Tris HCl
---------------	---

## 常规信息

<b>功能</b>	Degrades extracellular matrix. Proposed to play a role in breast cancer invasion and metastasis. Exhibits trypsin-like activity as defined by cleavage of synthetic substrates with Arg or Lys as the P1 site.
<b>疾病相关</b>	Defects in ST14 are a cause of ichthyosis autosomal recessive with hypotrichosis (ARIH) [MIM:610765]. ARIH is a skin disorder characterized by congenital ichthyosis associated with the presence of less than the normal amount of hair.
<b>序列相似性</b>	Belongs to the peptidase S1 family. Contains 2 CUB domains. Contains 4 LDL-receptor class A domains. Contains 1 peptidase S1 domain.
<b>细胞定位</b>	Membrane.

## 图片



ab114597 analysed on a 12.5% SDS-PAGE gel stained with Coomassie Blue.

**Please note:** All products are "FOR RESEARCH USE ONLY AND ARE NOT INTENDED FOR DIAGNOSTIC OR THERAPEUTIC USE"

## **Our Abpromise to you: Quality guaranteed and expert technical support**

---

- Replacement or refund for products not performing as stated on the datasheet
- Valid for 12 months from date of delivery
- Response to your inquiry within 24 hours
  
- We provide support in Chinese, English, French, German, Japanese and Spanish
- Extensive multi-media technical resources to help you
- We investigate all quality concerns to ensure our products perform to the highest standards

If the product does not perform as described on this datasheet, we will offer a refund or replacement. For full details of the Abpromise, please visit <http://www.abcam.cn/abpromise> or contact our technical team.

## **Terms and conditions**

---

- Guarantee only valid for products bought direct from Abcam or one of our authorized distributors