

Product datasheet

Recombinant Human PMP22 protein ab112343

1 图像

概述

| | |
|------|------------------|
| 产品名称 | 重组人PMP22蛋白 |
| 蛋白长度 | Protein fragment |

描述

| | |
|-----------|--|
| 性质 | Recombinant |
| 来源 | Wheat germ |
| 氨基酸序列 | |
| Accession | Q01453 |
| 种属 | Human |
| 序列 | VSQWIVGNHATDLWQNCSTSSSGNVHHCFS SSPNEWLQSVQATMILSII FSILSLFLFFCQLFTLTKGGRFYITGIFQILAGLCVMSAA |
| 分子量 | 36 kDa including tags |
| 氨基酸 | 25 to 114 |
| 标签 | GST tag N-Terminus |

技术指标

Our [Abpromise guarantee](#) covers the use of **ab112343** in the following tested applications.

The application notes include recommended starting dilutions; optimal dilutions/concentrations should be determined by the end user.

| | |
|------|--|
| 应用 | SDS-PAGE ELISA Western blot |
| 形式 | Liquid |
| 补充说明 | Best use within three months from the date of receipt of this protein. |

制备和贮存

| | |
|--------|---|
| 稳定性和存储 | Shipped on dry ice. Upon delivery aliquot and store at -80°C. Avoid freeze / thaw cycles. pH: 8.00 |
|--------|---|

常规信息

功能

Might be involved in growth regulation, and in myelination in the peripheral nervous system.

疾病相关

Defects in PMP22 are the cause of Charcot-Marie-Tooth disease type 1A (CMT1A) [MIM:118220]; also known as hereditary motor and sensory neuropathy IA. CMT1A is a form of Charcot-Marie-Tooth disease, the most common inherited disorder of the peripheral nervous system. Charcot-Marie-Tooth disease is classified in two main groups on the basis of electrophysiologic properties and histopathology: primary peripheral demyelinating neuropathy or CMT1, and primary peripheral axonal neuropathy or CMT2. Neuropathies of the CMT1 group are characterized by severely reduced nerve conduction velocities (less than 38 m/sec), segmental demyelination and remyelination with onion bulb formations on nerve biopsy, slowly progressive distal muscle atrophy and weakness, absent deep tendon reflexes, and hollow feet. CMT1A inheritance is autosomal dominant.

Defects in PMP22 are a cause of Dejerine-Sottas syndrome (DSS) [MIM:145900]; also known as Dejerine-Sottas neuropathy (DSN) or hereditary motor and sensory neuropathy III (HMSN3). DSS is a severe degenerating neuropathy of the demyelinating Charcot-Marie-Tooth disease category, with onset by age 2 years. DSS is characterized by motor and sensory neuropathy with very slow nerve conduction velocities, increased cerebrospinal fluid protein concentrations, hypertrophic nerve changes, delayed age of walking as well as areflexia. There are both autosomal dominant and autosomal recessive forms of Dejerine-Sottas syndrome.

Defects in PMP22 are a cause of hereditary neuropathy with liability to pressure palsies (HNPP) [MIM:162500]; an autosomal dominant disorder characterized by transient episodes of decreased perception or peripheral nerve palsies after slight traction, compression or minor traumas.

Defects in PMP22 are the cause of Charcot-Marie-Tooth disease type 1E (CMT1E) [MIM:118300]; also known as Charcot-Marie-Tooth disease and deafness autosomal dominant. CMT1E is an autosomal dominant form of Charcot-Marie-Tooth disease characterized by the association of sensorineural hearing loss with peripheral demyelinating neuropathy.

Defects in PMP22 may be a cause of inflammatory demyelinating polyneuropathy (IDP) [MIM:139393]. IDP is a putative autoimmune disorder presenting in an acute (AIDP) or chronic form (CIDP). The acute form is also known as Guillain-Barre syndrome.

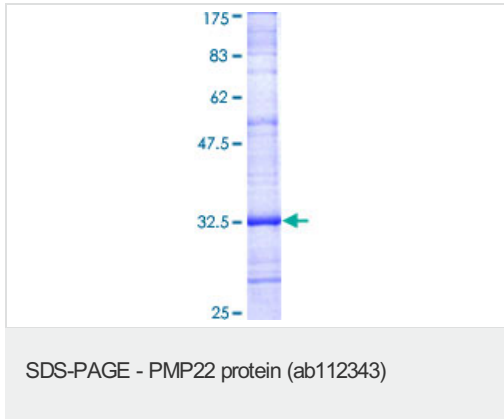
序列相似性

Belongs to the PMP-22/EMP/MP20 family.

细胞定位

Membrane.

图片



ab112343 analysed on a 12.5% SDS-PAGE gel stained with Coomassie Blue.

Please note: All products are "FOR RESEARCH USE ONLY AND ARE NOT INTENDED FOR DIAGNOSTIC OR THERAPEUTIC USE"

Our Abpromise to you: Quality guaranteed and expert technical support

- Replacement or refund for products not performing as stated on the datasheet
- Valid for 12 months from date of delivery
- Response to your inquiry within 24 hours
- We provide support in Chinese, English, French, German, Japanese and Spanish
- Extensive multi-media technical resources to help you
- We investigate all quality concerns to ensure our products perform to the highest standards

If the product does not perform as described on this datasheet, we will offer a refund or replacement. For full details of the Abpromise, please visit <http://www.abcam.cn/abpromise> or contact our technical team.

Terms and conditions

- Guarantee only valid for products bought direct from Abcam or one of our authorized distributors