

Product datasheet

Recombinant Human PIST protein ab93743

1 图像

概述

产品名称	重组人PIST蛋白
蛋白长度	Protein fragment

描述

性质	Recombinant
来源	Escherichia coli

氨基酸序列

种属	Human
序列	MGSSHHHHHH SSGLVPRGSH MIRKVL L L L K E DHEGLGISIT GGKEHGVPI L ISEIHPGQPA DRCGGLHVGD AILAVNGVNL RDTKHKEAVT ILSQQRGEIE FEVVYVAPEV DSDDENVEYE DESGHRYRLY LDELEGGNP GASCKDTSGE IKVLQGFNKK AVTDTHENG D LGTASETPLD DGASKLDDLH TLYHKKSY
氨基酸	278 to 454

技术指标

Our [Abpromise guarantee](#) covers the use of **ab93743** in the following tested applications.

The application notes include recommended starting dilutions; optimal dilutions/concentrations should be determined by the end user.

应用	SDS-PAGE
纯度	> 90 % SDS-PAGE. ab93743 was purified using conventional chromatography techniques.
形式	Liquid

制备和贮存

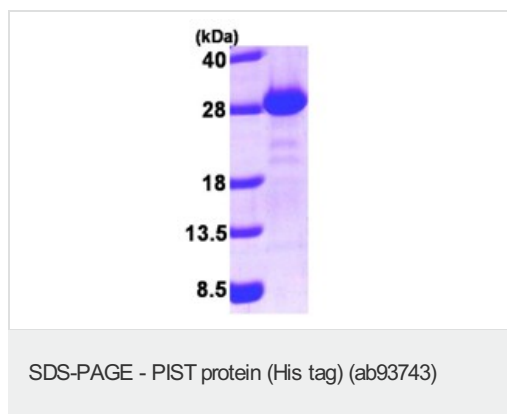
稳定性和存储	Shipped at 4°C. Upon delivery aliquot and store at -20°C or -80°C. Avoid repeated freeze / thaw cycles. Preservative: None
--------	-------------------------------------------------------------------------------------------------------------------------------

Constituents: 10% Glycerol, 20mM Tris HCl, 1mM DTT, pH 8.0

常规信息

功能	Plays a role in intracellular protein trafficking and degradation. May regulate CFTR chloride currents and acid-induced ACCN3 currents by modulating cell surface expression of both channels. May also regulate the intracellular trafficking of the ADR1B receptor. May play a role in autophagy. Overexpression results in CFTR intracellular retention and degradation in the lysosomes.
组织特异性	Ubiquitously expressed.
疾病相关	Note=A chromosomal aberration involving GOPC is found in a glioblastoma multiforme sample. An intra-chromosomal deletion del(6)(q21q21) is responsible for the formation of GOPC-ROS1 chimeric protein which has a constitutive receptor tyrosine kinase activity.
序列相似性	Contains 1 PDZ (DHR) domain.
结构域	The PDZ domain mediates interactions with FZD5, FZD8, ACCN3, GRID2, CLCN3 (By similarity). Mediates also interaction with CFTR and ADRB1. The coiled-coil region probably mediates association to membranes, targeting to the Golgi, and interactions with GOLGA3, and STX6. May also mediate interaction with RHOQ.
细胞定位	Cytoplasm. Golgi apparatus membrane. Golgi apparatus > trans-Golgi network membrane. Cell junction > synapse. Cell junction > synapse > postsynaptic cell membrane > postsynaptic density. Cell projection > dendrite. Enriched in synaptosomal and postsynaptic densities (PSD) fractions (By similarity). Expressed in cell bodies and dendrites of Purkinje cells (By similarity). Localized at the trans-Golgi network (TGN) of spermatids and the medulla of round spermatides.

图片



15% SDS-PAGE showing ab93743 (3ug)

Please note: All products are "FOR RESEARCH USE ONLY AND ARE NOT INTENDED FOR DIAGNOSTIC OR THERAPEUTIC USE"

Our Abpromise to you: Quality guaranteed and expert technical support

- Replacement or refund for products not performing as stated on the datasheet
- Valid for 12 months from date of delivery
- Response to your inquiry within 24 hours

- We provide support in Chinese, English, French, German, Japanese and Spanish
- Extensive multi-media technical resources to help you
- We investigate all quality concerns to ensure our products perform to the highest standards

If the product does not perform as described on this datasheet, we will offer a refund or replacement. For full details of the Abpromise, please visit <http://www.abcam.cn/abpromise> or contact our technical team.

Terms and conditions

- Guarantee only valid for products bought direct from Abcam or one of our authorized distributors