

Product datasheet

Recombinant Human PD-L1 protein ab112410

1 图像

概述

产品名称	重组人PD-L1蛋白
蛋白长度	Protein fragment

描述

性质	Recombinant
来源	Wheat germ

氨基酸序列

Accession	<a href="#">Q9NZQ7</a>
种属	Human
序列	ILVVDPVTSEHELTCQAEGYPKAEVIWTSSDHQVLSGKTTTTNSKREEKL FNVSTSLRINTTTNEIFYCTFRRLDPEENHTAELVIPELPLAHPNERTH
分子量	37 kDa including tags
氨基酸	141 to 240
标签	GST tag N-Terminus

技术指标

Our [Abpromise guarantee](#) covers the use of **ab112410** in the following tested applications.

The application notes include recommended starting dilutions; optimal dilutions/concentrations should be determined by the end user.

生物活性	This product is useful for Antibody Production and Protein Array
应用	ELISA Peptide Array Western blot
形式	Liquid
补充说明	Best used within three months from the date of receipt This product is useful for Antibody Production and Protein Array

制备和贮存

## 稳定性和存储

Shipped on dry ice. Upon delivery aliquot and store at -80°C. Avoid freeze / thaw cycles.

pH: 8.00

Constituents: 0.79% Tris HCl, 0.31% Glutathione

Note: Glutathione is reduced.

## 常规信息

### 功能

Involved in the costimulatory signal, essential for T-cell proliferation and production of IL10 and IFNG, in an IL2-dependent and a PDCD1-independent manner. Interaction with PDCD1 inhibits T-cell proliferation and cytokine production.

### 组织特异性

Highly expressed in the heart, skeletal muscle, placenta and lung. Weakly expressed in the thymus, spleen, kidney and liver. Expressed on activated T- and B-cells, dendritic cells, keratinocytes and monocytes.

### 序列相似性

Belongs to the immunoglobulin superfamily. BTN/MOG family.

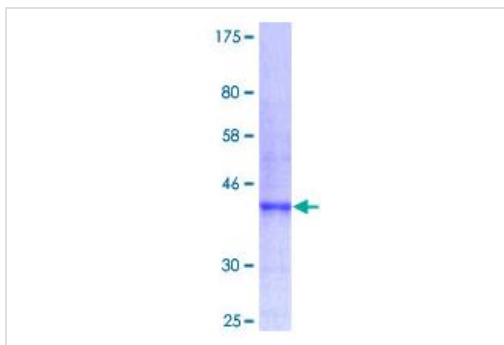
Contains 1 Ig-like C2-type (immunoglobulin-like) domain.

Contains 1 Ig-like V-type (immunoglobulin-like) domain.

### 细胞定位

Cell membrane and Endomembrane system.

## 图片



12.5% SDS-PAGE image, using ab112410.

(Stained with Coomassie Blue).

SDS-PAGE - Human PD-L1 protein fragment

(ab112410)

**Please note:** All products are "FOR RESEARCH USE ONLY AND ARE NOT INTENDED FOR DIAGNOSTIC OR THERAPEUTIC USE"

## Our Abpromise to you: Quality guaranteed and expert technical support

- Replacement or refund for products not performing as stated on the datasheet
- Valid for 12 months from date of delivery
- Response to your inquiry within 24 hours
- We provide support in Chinese, English, French, German, Japanese and Spanish
- Extensive multi-media technical resources to help you
- We investigate all quality concerns to ensure our products perform to the highest standards

If the product does not perform as described on this datasheet, we will offer a refund or replacement. For full details of the Abpromise, please visit <http://www.abcam.cn/abpromise> or contact our technical team.

## Terms and conditions

---

- Guarantee only valid for products bought direct from Abcam or one of our authorized distributors