

Product datasheet

Recombinant Human NME2 protein ab93692

2 图像

概述

产品名称	Recombinant人NME2 protein
蛋白长度	Full length protein

描述

性质	Recombinant
来源	Escherichia coli

氨基酸序列

种属	Human
序列	MANLERTFIA IKPDGVQRGL VGEIIKRFEQ KGFRLVAMKF LRASEEHLKQ HYIDLKDRPF FPGLVKYMNS GPVVAMVWEG LNVVKTGRVM LGETNPADSK PGTIRGDFCI QVGRNIIHGS DSVKSAEKEI SLWFKPEELV DYKSCAHDWV YE

技术指标

Our [Abpromise guarantee](#) covers the use of **ab93692** in the following tested applications.

The application notes include recommended starting dilutions; optimal dilutions/concentrations should be determined by the end user.

应用	Western blot SDS-PAGE
纯度	> 95 % SDS-PAGE. ab93692 is purified using conventional chromatography techniques.
形式	Liquid

制备和贮存

稳定性和存储	Shipped at 4°C. Upon delivery aliquot and store at -20°C or -80°C. Avoid repeated freeze / thaw cycles. Preservative: None Constituents: 10% Glycerol, 20mM Tris HCl, 1mM DTT, pH 8.0
--------	---

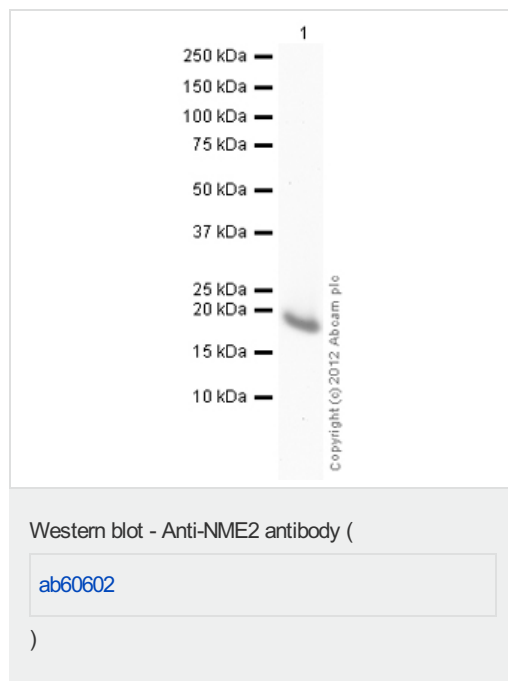
常规信息

功能	Major role in the synthesis of nucleoside triphosphates other than ATP. Negatively regulates Rho activity by interacting with AKAP13/LBC. Acts as a transcriptional activator of the MYC gene; binds DNA non-specifically (PubMed:8392752). Exhibits histidine protein kinase activity.
组织特异性	Ubiquitously expressed.
序列相似性	Belongs to the NDK family.
细胞定位	Cytoplasm. Nucleus. Isoform 2 is mainly cytoplasmic and isoform 1 and isoform 2 are excluded from the nucleolus.

图片



15% SDS-PAGE showing ab93692 at approximately 17 kDa (3 µg).



Anti-NME2 antibody ([ab60602](#)) at 1/1000 dilution + Recombinant Human NME2 protein (ab93692) at 0.1 µg

Secondary

Goat Anti-Mouse IgG H&L (HRP)
preadsorbed ([ab97040](#)) at 1/5000 dilution
Developed using the ECL technique

Performed under reducing conditions.

Exposure time : 2 minutes

Please note: All products are "FOR RESEARCH USE ONLY AND ARE NOT INTENDED FOR DIAGNOSTIC OR THERAPEUTIC USE"

Our Abpromise to you: Quality guaranteed and expert technical support

- Replacement or refund for products not performing as stated on the datasheet

- Valid for 12 months from date of delivery
- Response to your inquiry within 24 hours

- We provide support in Chinese, English, French, German, Japanese and Spanish
- Extensive multi-media technical resources to help you
- We investigate all quality concerns to ensure our products perform to the highest standards

If the product does not perform as described on this datasheet, we will offer a refund or replacement. For full details of the Abpromise, please visit <http://www.abcam.cn/abpromise> or contact our technical team.

Terms and conditions

- Guarantee only valid for products bought direct from Abcam or one of our authorized distributors