

Product datasheet

Recombinant Human NIPP1 protein ab114902

1 图像

概述

产品名称	Recombinant人NIPP1 protein
蛋白长度	Protein fragment

描述

性质	Recombinant
来源	Wheat germ

氨基酸序列

Accession	Q12972
种属	Human
序列	RRMQNFAFSGGLYGGLPPTHSEAGSQPHGIHGTTALIGGLPMPYPNLAPDV DLTPVVPSAVNMNPAPNPAVYNPEAVNEPKKKKYAKEAWPGKKPTPSLLI
分子量	37 kDa including tags
氨基酸	28 to 127

技术指标

Our [Abpromise guarantee](#) covers the use of **ab114902** in the following tested applications.

The application notes include recommended starting dilutions; optimal dilutions/concentrations should be determined by the end user.

应用	Western blot SDS-PAGE ELISA
形式	Liquid
补充说明	Protein concentration is above or equal to 0.05 mg/ml. Best use within three months from the date of receipt of this protein.

制备和贮存

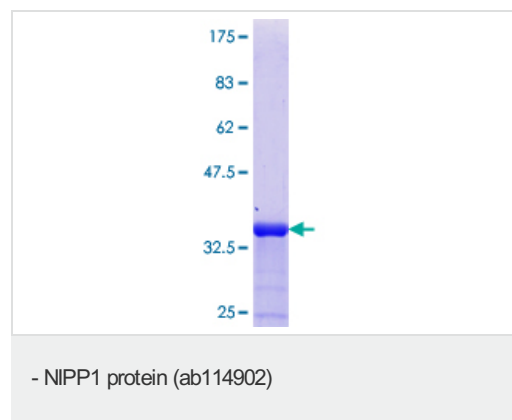
稳定性和存储	Shipped on dry ice. Upon delivery aliquot and store at -80°C. Avoid freeze / thaw cycles. pH: 8.00
--------	---

Constituents: 0.3% Glutathione, 0.79% Tris HCl

常规信息

功能	<p>Inhibitor subunit of the major nuclear protein phosphatase-1 (PP-1). It has RNA-binding activity but does not cleave RNA and may target PP-1 to RNA-associated substrates. May also be involved in pre-mRNA splicing. Binds DNA and might act as a transcriptional repressor. Seems to be required for cell proliferation.</p> <p>Isoform Gamma is a site-specific single-strand endoribonuclease that cleaves single strand RNA 3' to purines and pyrimidines in A+U-rich regions. It generates 5'-phosphate termini at the site of cleavage. This isoform does not inhibit PP-1. May be implicated in mRNA splicing.</p>
组织特异性	<p>Ubiquitously expressed, with highest levels in heart and skeletal muscle, followed by brain, placenta, lung, liver and pancreas. Less abundant in kidney. The concentration and ratio between isoforms is cell-type dependent. Isoform Alpha (>90%) and isoform Beta were found in brain, heart and kidney. Isoform Gamma is mainly found in B-cells and T-lymphocytes, and has been found in 293 embryonic kidney cells.</p>
序列相似性	<p>Contains 1 FHA domain.</p>
结构域	<p>Has a basic N- and C-terminal and an acidic central domain.</p>
翻译后修饰	<p>May be inactivated by phosphorylation on Ser-199 or Ser-204 (By similarity). Phosphorylated by Lyn in vitro on Tyr-264, and also on Tyr-335 in the presence of RNA.</p>
细胞定位	<p>Nucleus. Nucleus speckle. Primarily, but not exclusively, nuclear and Cytoplasm. Found mainly in the cytoplasm.</p>

图片



12.5% SDS-PAGE showing ab114902 at approximately 36.63kDa.
Stained with Coomassie Blue.

Please note: All products are "FOR RESEARCH USE ONLY AND ARE NOT INTENDED FOR DIAGNOSTIC OR THERAPEUTIC USE"

Our Abpromise to you: Quality guaranteed and expert technical support

- Replacement or refund for products not performing as stated on the datasheet
- Valid for 12 months from date of delivery
- Response to your inquiry within 24 hours
- We provide support in Chinese, English, French, German, Japanese and Spanish

- Extensive multi-media technical resources to help you
- We investigate all quality concerns to ensure our products perform to the highest standards

If the product does not perform as described on this datasheet, we will offer a refund or replacement. For full details of the Abpromise, please visit <http://www.abcam.cn/abpromise> or contact our technical team.

Terms and conditions

- Guarantee only valid for products bought direct from Abcam or one of our authorized distributors