

## Product datasheet

# Recombinant Human MHC Class II beta protein ab114224

### 1 图像

#### 概述

---

产品名称	重组人MHC Class II beta蛋白
蛋白长度	Full length protein

#### 描述

---

性质	Recombinant
来源	Wheat germ

#### 氨基酸序列

Accession [P04440](#)

种属 Human

序列  
 MMVLQVSAAPRTVALTALLMVLVLLTSVVQGRATPENYVYQGRQECYAFNGT  
 QRFLERYIYNREEYARFDSVDVGEFR  
 AVTELGRPAAEYWNSQKDILEEK  
 RAVPDRVCRHNYELDEAVTLQRRVQPKVNVSPSKKGPLQHNNLLVCHVTD  
 FY  
 PGSIQVRWFLNGQEETAGVVSTNLIRNGDWFQILVMLEMPQQGD  
 VYICQVEHTSLDSPVTVEWKAQSDSAQSK  
 TLTGAGGFVLGLIICGVGI FMHRRSKKVQRGSA

分子量 54 kDa including tags

氨基酸 1 to 258

#### 技术指标

---

Our [Abpromise guarantee](#) covers the use of **ab114224** in the following tested applications.

The application notes include recommended starting dilutions; optimal dilutions/concentrations should be determined by the end user.

应用	ELISA
	SDS-PAGE
	Western blot

形式 Liquid

补充说明 Protein concentration is above or equal to 0.05 mg/ml.  
 Best use within three months from the date of receipt of this protein.

## 制备和贮存

### 稳定性和存储

Shipped on dry ice. Upon delivery aliquot and store at -80°C. Avoid freeze / thaw cycles.

pH: 8.00

Constituents: 0.3% Glutathione, 0.79% Tris HCl

## 常规信息

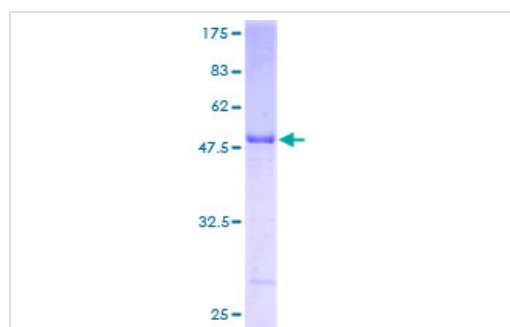
### 相关性

Major Histocompatibility Class II molecules are primarily expressed on B-cells and antigen presenting cells (APCs). They are composed of two polypeptide chains. These polypeptides (alpha and beta) are about 230 and 240 amino acids long, respectively, and are glycosylated. These polypeptides fold into two separate domains; the non-polymorphic alpha chain and the polymorphic beta chain. The antigen binding region of the molecule is bounded by a beta-pleated sheet on the bottom and two alpha helices on the sides, and is capable of binding (via non-covalent interactions) a small peptide of about 10 amino acids.

### 细胞定位

Cell Membrane

## 图片



ab114224 analysed on a 12.5% SDS-PAGE gel stained with Coomassie Blue.

SDS-PAGE - MHC Class II beta protein (ab114224)

**Please note:** All products are "FOR RESEARCH USE ONLY AND ARE NOT INTENDED FOR DIAGNOSTIC OR THERAPEUTIC USE"

## Our Abpromise to you: Quality guaranteed and expert technical support

- Replacement or refund for products not performing as stated on the datasheet
- Valid for 12 months from date of delivery
- Response to your inquiry within 24 hours
- We provide support in Chinese, English, French, German, Japanese and Spanish
- Extensive multi-media technical resources to help you
- We investigate all quality concerns to ensure our products perform to the highest standards

If the product does not perform as described on this datasheet, we will offer a refund or replacement. For full details of the Abpromise, please visit <http://www.abcam.cn/abpromise> or contact our technical team.

## Terms and conditions

---

- Guarantee only valid for products bought direct from Abcam or one of our authorized distributors