

Product datasheet

Recombinant Human MAP1LC3A protein ab98119

1 图像

概述

产品名称	Recombinant人MAP1LC3A protein
蛋白长度	Full length protein

描述

性质	Recombinant
来源	Escherichia coli

氨基酸序列

Accession	Q9H492
种属	Human
序列	MPSDRPFKQR RSFADRCKEV QQIRDQHPSK IPVIIERYKG EKQLPVLDKT KFLVPDHVNM SELVKIIRRR LQLNPTQAFF LLVNQHSMVSVSTPIADIYE QEKDEDGFLY MVYASQETFG LEHHHHHH
分子量	15 kDa including tags
氨基酸	1 to 120
标签	His tag C-Terminus

技术指标

Our [Abpromise guarantee](#) covers the use of **ab98119** in the following tested applications.

The application notes include recommended starting dilutions; optimal dilutions/concentrations should be determined by the end user.

应用	SDS-PAGE Mass Spectrometry
质谱法	MALDI-TOF
纯度	> 95 % SDS-PAGE. ab98119 is purified by using conventional chromatography techniques.
形式	Liquid

别名和参考

稳定性和存储

Shipped at 4°C. Upon delivery aliquot and store at -20°C or -80°C. Avoid repeated freeze / thaw cycles.

Preservative: None

Constituents: 20% Glycerol, 20mM Tris HCl, 100mM Sodium chloride, 1mM DTT, pH 8

常规信息

功能 Probably involved in formation of autophagosomal vacuoles (autophagosomes).

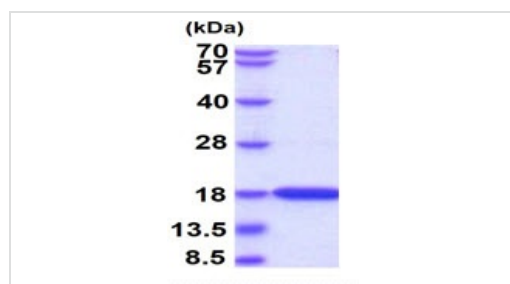
组织特异性 Most abundant in heart, brain, liver, skeletal muscle and testis but absent in thymus and peripheral blood leukocytes.

序列相似性 Belongs to the MAP1 LC3 family.

翻译后修饰 The precursor molecule is cleaved by APG4B/ATG4B to form the cytosolic form, LC3-I. This is activated by APG7L/ATG7, transferred to ATG3 and conjugated to phospholipid to form the membrane-bound form, LC3-II.

细胞定位 Cytoplasm > cytoskeleton. Endomembrane system. Cytoplasmic vesicle > autophagosome membrane. LC3-II binds to the autophagic membranes.

图片



15% SDS-PAGE analysis of ab98119 (3ug)

SDS-PAGE - Recombinant Human MAP1LC3A protein (ab98119)

Please note: All products are "FOR RESEARCH USE ONLY AND ARE NOT INTENDED FOR DIAGNOSTIC OR THERAPEUTIC USE"

Our Abpromise to you: Quality guaranteed and expert technical support

- Replacement or refund for products not performing as stated on the datasheet
- Valid for 12 months from date of delivery
- Response to your inquiry within 24 hours
- We provide support in Chinese, English, French, German, Japanese and Spanish
- Extensive multi-media technical resources to help you
- We investigate all quality concerns to ensure our products perform to the highest standards

If the product does not perform as described on this datasheet, we will offer a refund or replacement. For full details of the Abpromise, please visit <http://www.abcam.cn/abpromise> or contact our technical team.

Terms and conditions

- Guarantee only valid for products bought direct from Abcam or one of our authorized distributors