

Product datasheet

Recombinant Human Loricrin protein ab114261

1 图像

概述

产品名称	Recombinant人Loricrin protein
蛋白长度	Full length protein

描述

性质	Recombinant
来源	Wheat germ

氨基酸序列

Accession	P23490
种属	Human
序列	MSYQKKQPTPQPVPDCVKTSGGGGGGGGGGGCGFFGGGSSGGSSGSG CGYSGGGGYSGGGCG GGSSGGGGGGIGGCGGSSGGSVKYSGGGSSG GGSGCFSSGGGSGCFSSGGGSSGGGSGCFS SGGGSSGGGSGCFSS GGGFSGQAVQCQSYGGVSSGGSSGGGSGCFSSGGGGSVCGYSGGGSG GGSGCGGSSGGSGSYVSSQQTQTSCAPQPSYGGGSSGGGSSGGSGC FSSGGGGSSGCGGGS SGIGSGCIISGGSVCGGGSSGGGGSSVGG SGSGKGVPICHQTQQKQAPTWPSK
分子量	61 kDa including tags
氨基酸	1 to 316

技术指标

Our [Abpromise guarantee](#) covers the use of **ab114261** in the following tested applications. The application notes include recommended starting dilutions; optimal dilutions/concentrations should be determined by the end user.

应用	ELISA SDS-PAGE Western blot
形式	Liquid

补充说明

Protein concentration is above or equal to 0.05 µg/µl

制备和贮存

稳定性和存储

Shipped on dry ice. Upon delivery aliquot and store at -80°C. Avoid freeze / thaw cycles.

pH: 8.00

Constituents: 0.3% Glutathione, 0.79% Tris HCl

常规信息

功能

Major keratinocyte cell envelope protein.

疾病相关

Defects in LOR are a cause of progressive symmetric erythrokeratoderma (PSEK) [MIM:133200]. Erythrokeratodermas are a group of disorders characterized by widespread erythematous plaques, either stationary or migratory, associated with features that include palmoplantar keratoderma. PSEK is characterized by erythematous and hyperkeratotic plaques. Defects in LOR are the cause of Vohwinkel syndrome with ichthyosis (VSI) [MIM:604117]; also known as loricrin keratoderma (LK) or mutilating keratoderma with ichthyosis. VSI is an ichthyotic variant of Vohwinkel syndrome (VS) characterized by progressive symmetric erythrokeratoderma or congenital ichthyosiform erythroderma born as a collodion baby. Common clinical features include hyperkeratosis of the palms and soles with digital constriction.

翻译后修饰

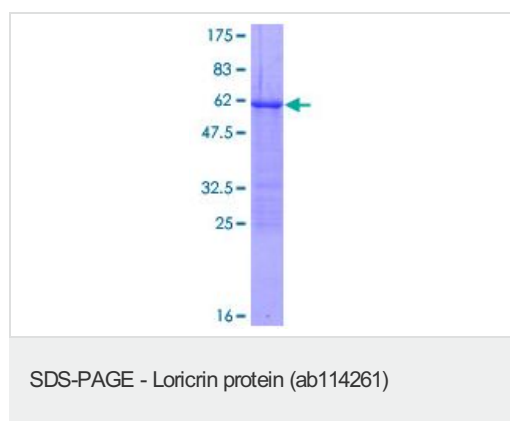
Substrate of transglutaminases. Some glutamines and lysines are cross-linked to other loricrin molecules and to SPRRs proteins.

Contains inter- or intramolecular disulfide-bonds.

细胞定位

Cytoplasm. Nucleus > nucleoplasm.

图片



ab114261 analysed by 12.5% SDS-PAGE and stained with Coomassie Blue.

Please note: All products are "FOR RESEARCH USE ONLY AND ARE NOT INTENDED FOR DIAGNOSTIC OR THERAPEUTIC USE"

Our Abpromise to you: Quality guaranteed and expert technical support

- Replacement or refund for products not performing as stated on the datasheet
- Valid for 12 months from date of delivery

- Response to your inquiry within 24 hours
- We provide support in Chinese, English, French, German, Japanese and Spanish
- Extensive multi-media technical resources to help you
- We investigate all quality concerns to ensure our products perform to the highest standards

If the product does not perform as described on this datasheet, we will offer a refund or replacement. For full details of the Abpromise, please visit <http://www.abcam.cn/abpromise> or contact our technical team.

Terms and conditions

- Guarantee only valid for products bought direct from Abcam or one of our authorized distributors