

Product datasheet

Recombinant Human Kir6.2 protein ab114436

1 图像

概述

产品名称	重组人Kir6.2蛋白
蛋白长度	Protein fragment

描述

性质	Recombinant
来源	Wheat germ

氨基酸序列

Accession	<a href="#">Q14654</a>
种属	Human
序列	RTSYLADEILWGQRFVPIVAEEDGRYSVDYSKFGNTVKVPTPLCTARQLD EDHSLLEALTLASARGPLRKRSVPMKAKPKFSISPDSLS
分子量	36 kDa including tags
氨基酸	301 to 390

技术指标

Our [Abpromise guarantee](#) covers the use of **ab114436** in the following tested applications.

The application notes include recommended starting dilutions; optimal dilutions/concentrations should be determined by the end user.

应用	ELISA SDS-PAGE Western blot
形式	Liquid
补充说明	Protein concentration is above or equal to 0.05 mg/ml. Best use within three months from the date of receipt of this protein.

制备和贮存

稳定性和存储	Shipped on dry ice. Upon delivery aliquot and store at -80°C. Avoid freeze / thaw cycles. pH: 8.00
--------	---

Constituents: 0.3% Glutathione, 0.79% Tris HCl

## 常规信息

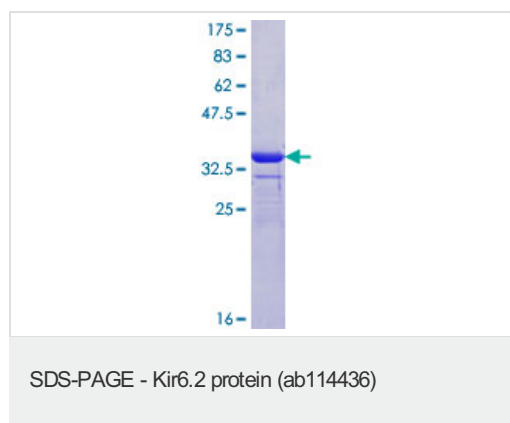
### 相关性

ATP-sensitive potassium (K(ATP)) channels are found in endocrine cells, neurons and both smooth and striated muscle, where they play an important role in controlling insulin secretion and vascular tone, and protect neurons under metabolic stress. Kir6.2 is a member of the inward rectifier potassium channel family, which is characterised by a greater tendency to allow potassium flow into the cell rather than out of it. It associates with the sulphonylurea receptor SUR1/ABCC8 to form a subfamily of K(ATP) channels that, when mutated or misregulated, are associated with forms of hyperinsulinemic hypoglycemia, neonatal diabetes, or pre-disposition to type 2 diabetes mellitus.

### 细胞定位

Cell Membrane; Multi-pass membrane protein

## 图片



ab114436 analysed on a 12.5% SDS-PAGE gel stained with Coomassie Blue.

**Please note:** All products are "FOR RESEARCH USE ONLY AND ARE NOT INTENDED FOR DIAGNOSTIC OR THERAPEUTIC USE"

## Our Abpromise to you: Quality guaranteed and expert technical support

- Replacement or refund for products not performing as stated on the datasheet
- Valid for 12 months from date of delivery
- Response to your inquiry within 24 hours
- We provide support in Chinese, English, French, German, Japanese and Spanish
- Extensive multi-media technical resources to help you
- We investigate all quality concerns to ensure our products perform to the highest standards

If the product does not perform as described on this datasheet, we will offer a refund or replacement. For full details of the Abpromise, please visit <http://www.abcam.cn/abpromise> or contact our technical team.

## Terms and conditions

- Guarantee only valid for products bought direct from Abcam or one of our authorized distributors