

Product datasheet

Recombinant Human Kallikrein 7 protein ab114437

1 图像

概述

产品名称	Recombinant人Kallikrein 7 protein
蛋白长度	Protein fragment

描述

性质	Recombinant
来源	Wheat germ

氨基酸序列

Accession	P49862
种属	Human
序列	IDGAPCARGSHPWQVALLSGNQLHCGGVLVNERWVLTAAHCKMNEYTVHL GSDTLGDRRAQRIKASKSFRHPGYSTQTHVNDLMLVKLNSQARLSSMVKK
分子量	37 kDa including tags
氨基酸	31 to 130

技术指标

Our [Abpromise guarantee](#) covers the use of **ab114437** in the following tested applications.

The application notes include recommended starting dilutions; optimal dilutions/concentrations should be determined by the end user.

应用	ELISA SDS-PAGE Western blot
形式	Liquid
补充说明	Protein concentration is above or equal to 0.05 mg/ml. Best use within three months from the date of receipt of this protein.

制备和贮存

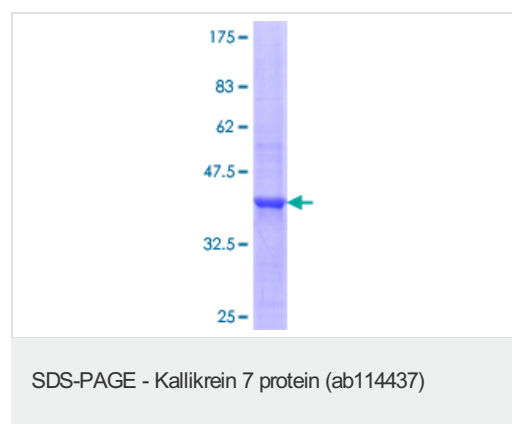
稳定性和存储	Shipped on dry ice. Upon delivery aliquot and store at -80°C. Avoid freeze / thaw cycles. pH: 8.00
--------	---

Constituents: 0.3% Glutathione, 0.79% Tris HCl

常规信息

功能	May catalyze the degradation of intercellular cohesive structures in the cornified layer of the skin in the continuous shedding of cells from the skin surface. Specific for amino acid residues with aromatic side chains in the P1 position. SCCE cleaves insulin B chain at '6-Leu-Cys-7', '16-Tyr-Leu-17', '25-Phe-Tyr-26' and '26-Tyr-Thr-27'. Could play a role in the activation of precursors to inflammatory cytokines.
组织特异性	Abundantly expressed in the skin and is expressed by keratinocytes in the epidermis. Also expressed in the brain, mammary gland, cerebellum, spinal cord and kidney. Lower levels in salivary glands, uterus, thymus, thyroid, placenta, trachea and testis. Up-regulated in ovarian carcinoma, especially late-stage serous carcinoma, compared with normal ovaries and benign adenomas (at protein level).
序列相似性	Belongs to the peptidase S1 family. Kallikrein subfamily. Contains 1 peptidase S1 domain.
细胞定位	Secreted. In ovarian carcinoma, secreted and also observed at the apical membrane and in cytoplasm at the invasive front.

图片



ab114437 analysed on a 12.5% SDS-PAGE gel stained with Coomassie Blue.

SDS-PAGE - Kallikrein 7 protein (ab114437)

Please note: All products are "FOR RESEARCH USE ONLY AND ARE NOT INTENDED FOR DIAGNOSTIC OR THERAPEUTIC USE"

Our Abpromise to you: Quality guaranteed and expert technical support

- Replacement or refund for products not performing as stated on the datasheet
- Valid for 12 months from date of delivery
- Response to your inquiry within 24 hours
- We provide support in Chinese, English, French, German, Japanese and Spanish
- Extensive multi-media technical resources to help you
- We investigate all quality concerns to ensure our products perform to the highest standards

If the product does not perform as described on this datasheet, we will offer a refund or replacement. For full details of the Abpromise, please visit <http://www.abcam.cn/abpromise> or contact our technical team.

Terms and conditions

- Guarantee only valid for products bought direct from Abcam or one of our authorized distributors